



PL-C/T

5.5PL-C/LED/13H/830/IF5/P/4P 20/1

Philips PLED 4-pin & 2-pin lamps are an affordable LED solution to replace compact fluorescent lamps. The product provides a natural lighting effect for use in many lighting applications, and provides instant energy savings, making them an environmentally-friendly solution. Available as replacements for 13W, 26W and 32W compact fluorescent lamps.

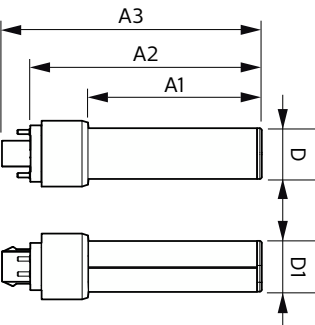
Product data

General Information		Lamp Current (Max)		280 mA
Cap-Base	G24Q [G24q]	Lamp Current (Min)	130 mA	
Nominal lifetime	50,000 hour(s)	Wattage Equivalent	13 W	
Switching Cycle	50,000	Starting Time (Nom)	0.5 s	
Lighting Technology	LED	Warm-up time to 60% light	0.5 s	
EU RoHS compliant	Yes	Power Factor (Fraction)	0.9	
Light Technical		Voltage (Nom)	14-60 V	
Color Code	830 [CCT of 3000K]	UL Type	UL Type A	
Beam Angle (Nom)	150 degree(s)	Temperature		
Luminous Flux	550 lm	Ambient temperature range	-20 °C to 45 °C	
Color Designation	White (WH)	T-Case Maximum (Nom)	75 °C	
Correlated Color Temperature (Nom)	3000 K	Controls and Dimming		
Luminous Efficacy (rated) (Nom)	100.00 lm/W	Dimmable	Yes	
Color Consistency	<6	Mechanical and Housing		
Color rendering index (CRI)	82	Bulb Finish	Frosted	
LLMF At End Of Nominal Lifetime (Nom)	70 %	Bulb Material	Plastic	
Operating and Electrical		Product Length	140 mm	
Line Frequency	25000-100000 Hz	Bulb Shape	PL-C	
Input Frequency	25000-100000 Hz			
Power Consumption	5.5 W			

Approval and Application	
Energy Saving Product	Yes
Approval Marks	RoHS compliance UL certificate
Energy Consumption kWh/1000 h	- kWh
Application Conditions	
can it be used in closed luminaires	Yes
Product Data	
Order product name	5.5PL-C/LED/13H/830/IF5/P/4P 20/1

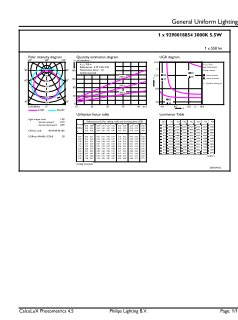
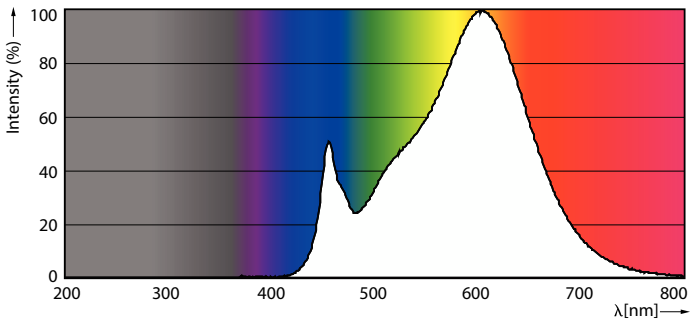
Full product name	5.5PL-C/LED/13H/830/IF5/P/4P 20/1
Order code	532408
Material Nr. (12NC)	929001885404
Numerator - Quantity Per Pack	1
EAN/UPC - Product/Case	046677532406
Numerator - Packs per outer box	20
EAN/UPC - Case	50046677532401

Dimensional drawing



Product	D	D1	A1	A2	A3
5.5PL-C/LED/13H/830/IF5/P/4P 20/1	27 mm	27 mm	91.5 mm	122.4 mm	137.4 mm

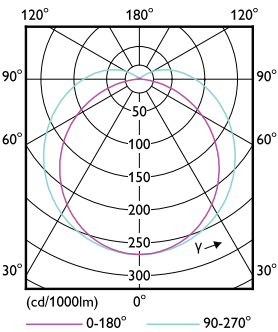
Photometric data



Spectral Power Distribution Colour - 5.5PL-C/LED/13H/830/IF5/P/4P 20/1

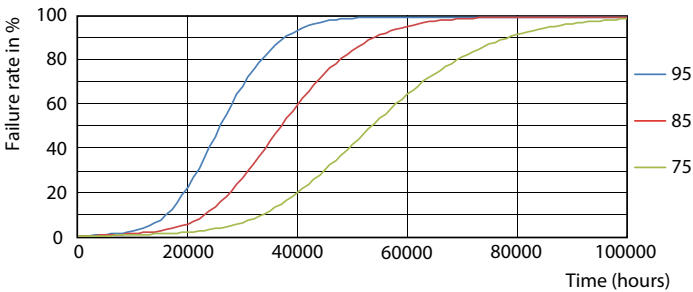
General uniform lighting - 5.5PL-C/LED/13H/830/IF5/P/4P 20/1

Photometric data

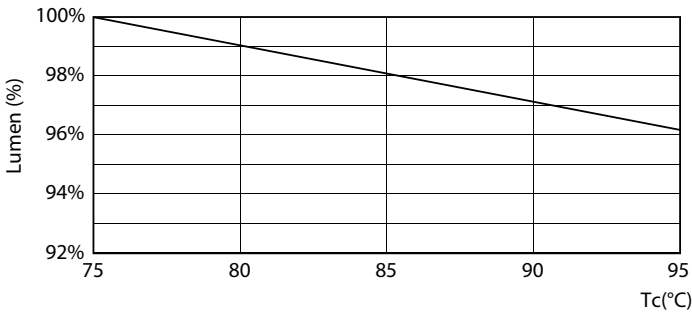


Light Distribution Diagram - 5.5PL-C/LED/13H/830/IF5/P/4P 20/1

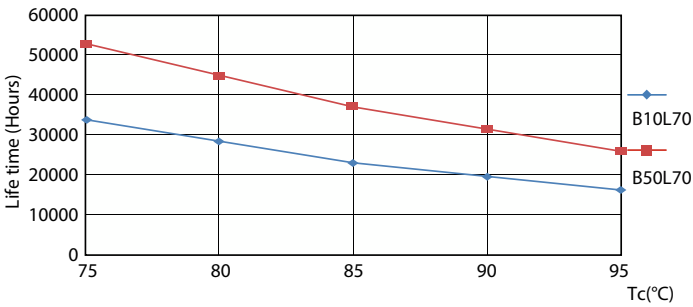
Lifetime



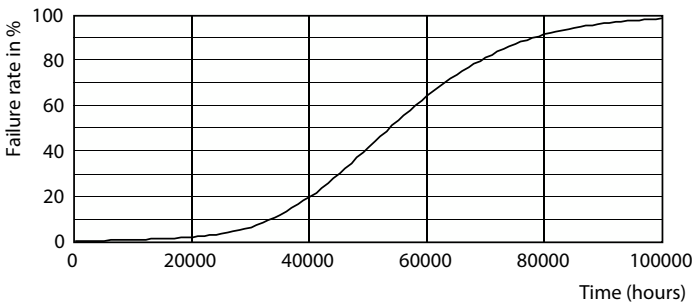
Life Expectancy Diagram - 5.5PL-C/LED/13H/830/IF5/P/4P 20/1



Lumen Maintenance Diagram - 5.5PL-C/LED/13H/830/IF5/P/4P 20/1

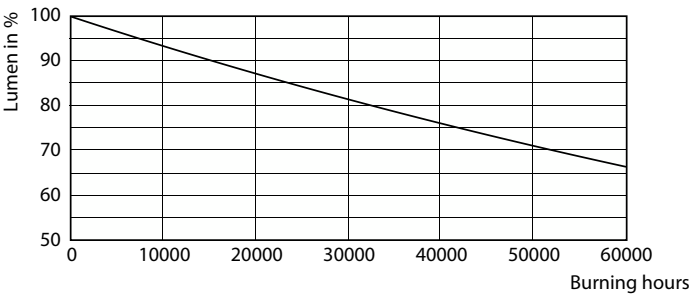


Life Expectancy Diagram - 5.5PL-C/LED/13H/830/IF5/P/4P 20/1



Life Expectancy Diagram - 5.5PL-C/LED/13H/830/IF5/P/4P 20/1

Lifetime



Lumen Maintenance Diagram - 5.5PL-C/LED/13H/830/IF5/P/4P 20/1

