



# CorePro LED PL 4pin 2pin

## 5.5PL-C/LED/13H/835/IF5/P/4P 20/1

The CorePro LED Type A - Ballast Driven (Plug and Play) InstantFit CFL-ni is a great LED solution suitable for replacing both 2-pin and 4-pin CFL fluorescent lamps, using an existing ballast. Both vertical and horizontal options are available with the horizontal version having a rotatable end cap to ensure the light is correctly aimed.

### Product data

General Information	
Base	G24Q [ G24q]
Nominal Lifetime (Nom)	50000 h
Switching Cycle	50000X
B50L70	50000 h
Light Technical	
Color Code	835 [ CCT of 3500K]
Beam Angle (Nom)	150 °
Initial lumen (Nom)	550 lm
Luminous Flux (Rated) (Nom)	550 lm
Rated Beam Angle	150 °
Correlated Color Temperature (Nom)	3500 K
Color Consistency	<6
Color Rendering Index (Nom)	82
LLMF At End Of Nominal Lifetime (Nom)	70 %
Operating and Electrical	
Input Frequency	25000-100000 Hz
Power (Rated) (Nom)	5.5 W

Lamp Current (Max)	280 mA
Lamp Current (Min)	130 mA
Starting Time (Nom)	0.5 s
Warm Up Time to 60% Light (Nom)	0.5 s
Power Factor (Nom)	0.9
Voltage (Nom)	14-60 V
Temperature	
T-Ambient (Max)	45 °C
T-Ambient (Min)	-20 °C
T-Storage (Max)	65 °C
T-Storage (Min)	-40 °C
T-Case Maximum (Nom)	75 °C
Controls and Dimming	
Dimmable	No
Mechanical and Housing	
Height	27 mm

# CorePro LED PL 4pin 2pin

## Approval and Application

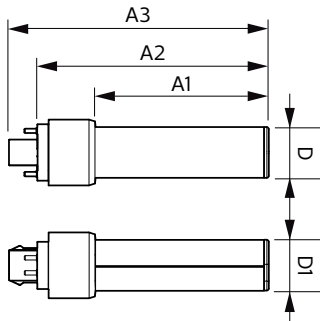
Energy Saving Product	Yes
Approbation Marks	UL certificate RoHS compliance

## Product Data

Order product name	5.5PL-C/LED/13H/835/IF5/P/4P 20/1
EAN/UPC - Product	046677532413
Order code	532416

Numerator - Quantity Per Pack	1
Numerator - Packs per outer box	20
Material Nr. (12NC)	929001885504
Net Weight (Piece)	0.060 kg
Model Number	9290018855

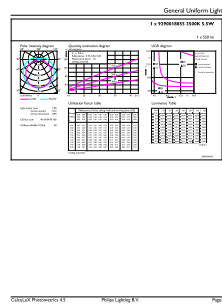
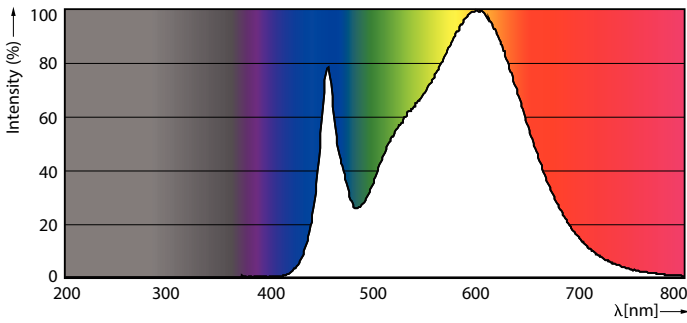
## Dimensional drawing



PLED PLC-H 5-13W 580lm 3500K G24q

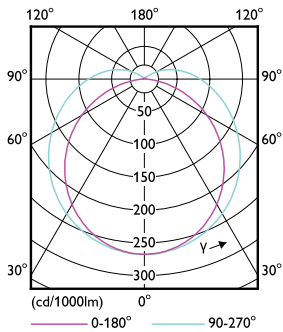
Product	D	D1	A1	A2	A3
5.5PL-C/LED/13H/835/IF5/P/4P 20/1	27 mm	27 mm	91.5 mm	122.4 mm	137.4 mm

## Photometric data



LEDtube PLC 13H 5.5W G24Q 835 15D ND

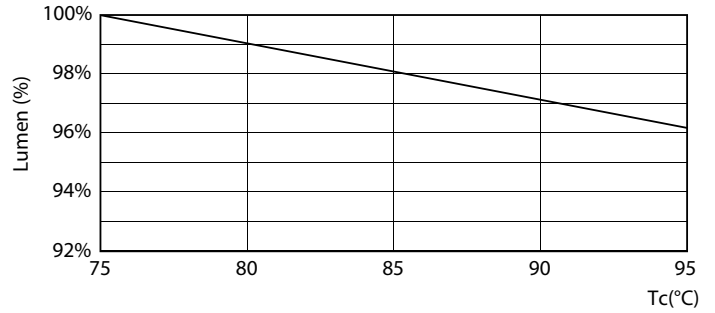
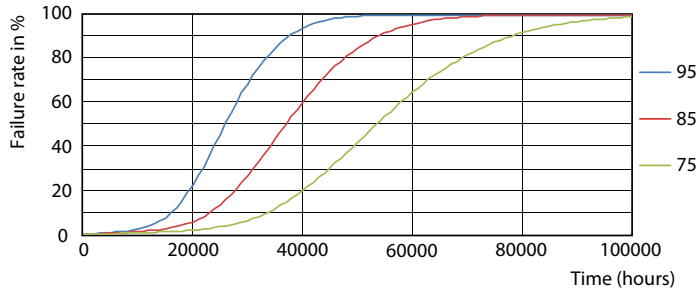
LEDtube PLC 13H 5.5W G24Q 835 15D ND



LEDtube PLC 13H 5W GX23-2 827 15D ND

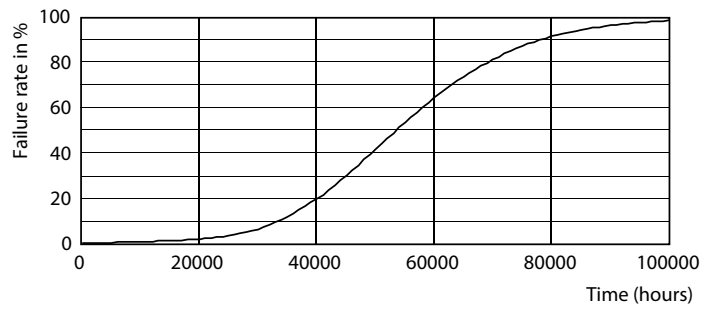
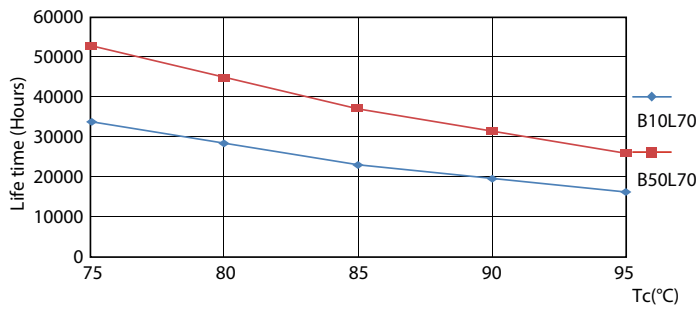
# CorePro LED PL 4pin 2pin

## Lifetime



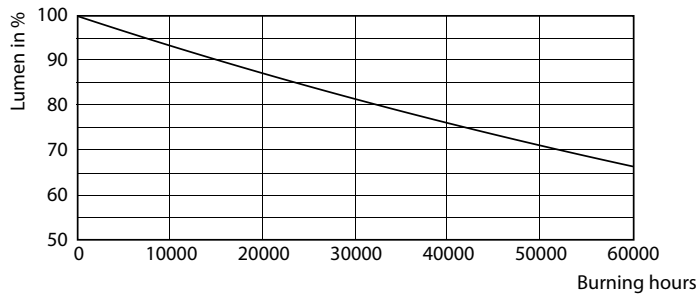
LEDtube PLC 13H 5.5W G24Q 827 15D ND

LEDtube PLC 13H 5.5W G24Q 827 15D ND



LEDtube PLC 13H 5.5W G24Q 827 15D ND

LEDtube PLC 13H 5W GX23-2 827 15D ND



LEDtube PLC 13H 5W GX23-2 827 15D ND

## CorePro LED PL 4pin 2pin

