



PL-C/T

5.5PL-C/LED/13H/840/IF5/P/4P 20/1

Philips PLED 4-pin & 2-pin lamps are an affordable LED solution to replace compact fluorescent lamps. The product provides a natural lighting effect for use in many lighting applications, and provides instant energy savings, making them an environmentally-friendly solution. Available as replacements for 13W, 26W and 32W compact fluorescent lamps.

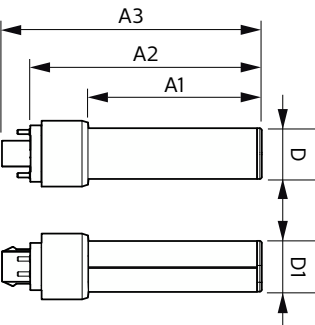
Product data

General Information		Lamp Current (Max)		280 mA
Cap-Base	G24Q [G24q]	Lamp Current (Min)		130 mA
Nominal lifetime	50,000 hour(s)	Wattage Equivalent		13 W
Switching Cycle	50,000	Starting Time (Nom)		0.5 s
Lighting Technology	LED	Warm-up time to 60% light		0.5 s
EU RoHS compliant	Yes	Power Factor (Fraction)		0.9
Light Technical		Voltage (Nom)		14-60 V
Color Code	840 [CCT of 4000K]	UL Type		UL Type A
Beam Angle (Nom)	150 degree(s)	Temperature		
Luminous Flux	580 lm	Ambient temperature range		-20 °C to 45 °C
Color Designation	Cool White (CW)	T-Case Maximum (Nom)		75 °C
Correlated Color Temperature (Nom)	4000 K	Controls and Dimming		
Luminous Efficacy (rated) (Nom)	105.00 lm/W	Dimmable		Yes
Color Consistency	<6	Mechanical and Housing		
Color rendering index (CRI)	82	Bulb Finish		Frosted
LLMF At End Of Nominal Lifetime (Nom)	70 %	Bulb Material		Plastic
Operating and Electrical		Product Length		140 mm
Line Frequency	25000-100000 Hz	Bulb Shape		PL-C
Input Frequency	25000-100000 Hz			
Power Consumption	5.5 W			

Approval and Application	
Energy Saving Product	Yes
Approval Marks	RoHS compliance UL certificate
Energy Consumption kWh/1000 h	- kWh
Application Conditions	
can it be used in closed luminaires	Yes
Product Data	
Order product name	5.5PL-C/LED/13H/840/IF5/P/4P 20/1

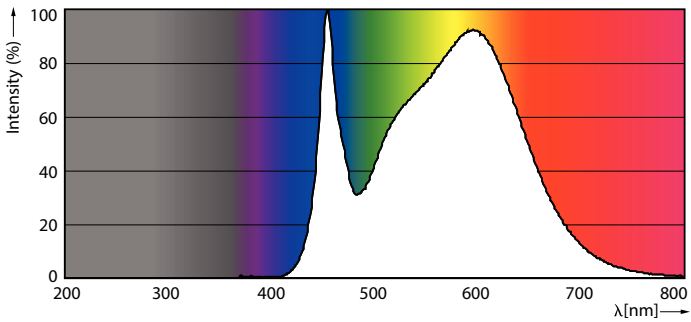
Full product name	5.5PL-C/LED/13H/840/IF5/P/4P 20/1
Order code	532424
Material Nr. (12NC)	929001885604
Numerator - Quantity Per Pack	1
EAN/UPC - Product/Case	046677532420
Numerator - Packs per outer box	20
EAN/UPC - Case	50046677532425

Dimensional drawing

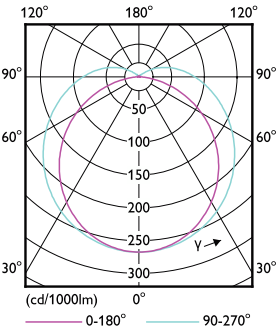


Product	D	D1	A1	A2	A3
5.5PL-C/LED/13H/840/IF5/P/4P 20/1	27 mm	27 mm	91.5 mm	122.4 mm	137.4 mm

Photometric data

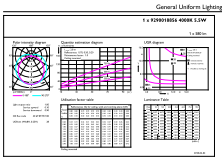


Spectral Power Distribution Colour - 5.5PL-C/LED/13H/840/IF5/P/4P 20/1



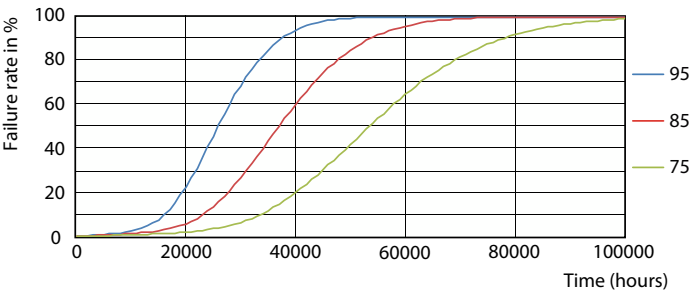
Light Distribution Diagram - 5.5PL-C/LED/13H/840/IF5/P/4P 20/1

Photometric data

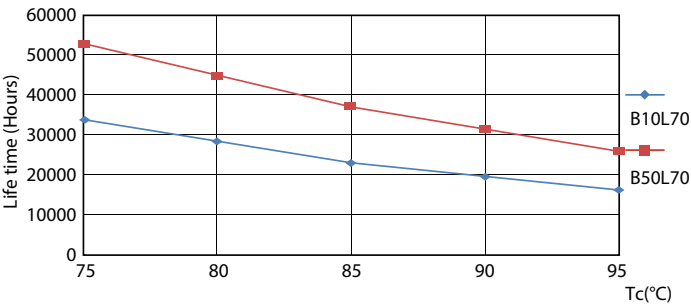


General uniform lighting - 5.5PL-C/LED/13H/840/IF5/P/4P 20/1

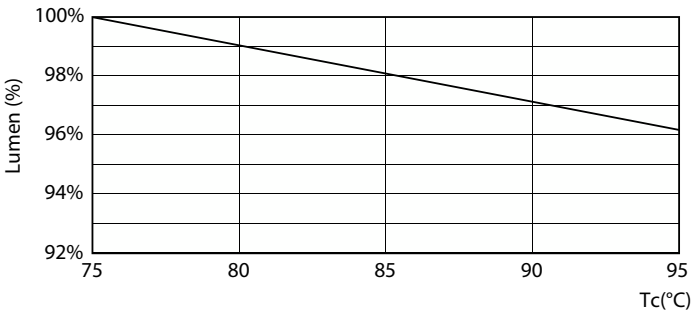
Lifetime



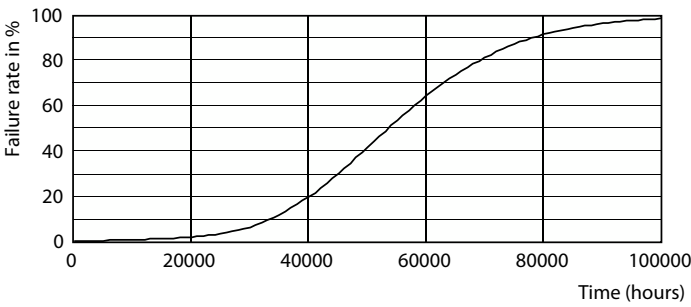
Life Expectancy Diagram - 5.5PL-C/LED/13H/840/IF5/P/4P 20/1



Life Expectancy Diagram - 5.5PL-C/LED/13H/840/IF5/P/4P 20/1

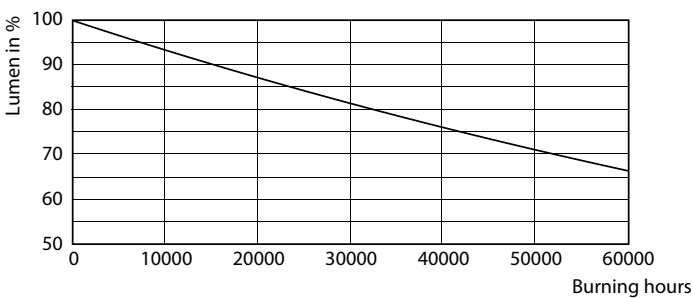


Lumen Maintenance Diagram - 5.5PL-C/LED/13H/840/IF5/P/4P 20/1



Life Expectancy Diagram - 5.5PL-C/LED/13H/840/IF5/P/4P 20/1

Lifetime



Lumen Maintenance Diagram - 5.5PL-C/LED/13H/840/IF5/P/4P 20/1

