



PL-C/T

5.5PL-C/LED/13H/840/IF5/P/4P 20/1

Philips PLED 4-pin & 2-pin lamps are an affordable LED solution to replace compact fluorescent lamps. The product provides a natural lighting effect for use in many lighting applications, and provides instant energy savings, making them an environmentally-friendly solution. Available as replacements for 13W, 26W and 32W compact fluorescent lamps.

Product data

General Information	
Base	G24Q [G24q]
Nominal Lifetime (Nom)	50000 h
Switching Cycle	50000X
B50L70	50000 h
Light Technical	
Color Code	841 [CCT of 4100K (841)]
Beam Angle (Nom)	150 °
Initial lumen (Nom)	580 lm
Luminous Flux (Rated) (Nom)	580 lm
Rated Beam Angle	150 °
Correlated Color Temperature (Nom)	4000 K
Luminous Efficacy (rated) (Nom)	105.00 lm/W
Color Consistency	<6
Color Rendering Index (Nom)	82
LLMF At End Of Nominal Lifetime (Nom)	70 %
Operating and Electrical	
Input Frequency	25000-100000 Hz
Power (Rated) (Nom)	5.5 W
Lamp Current (Max)	280 mA

Lamp Current (Min)	130 mA
Starting Time (Nom)	0.5 s
Warm Up Time to 60% Light (Nom)	0.5 s
Power Factor (Nom)	0.9
Voltage (Nom)	14-60 V

Temperature	
T-Ambient (Max)	45 °C
T-Ambient (Min)	-20 °C
T-Storage (Max)	65 °C
T-Storage (Min)	-40 °C
T-Case Maximum (Nom)	75 °C

Controls and Dimming	
Dimmable	Yes

Mechanical and Housing	
Height	27 mm

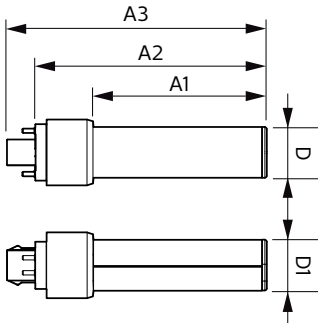
Approval and Application	
Energy Saving Product	Yes

PL-C/T

Approbation Marks	RoHS compliance UL certificate
Product Data	
Order product name	5.5PL-C/LED/13H/840/IF5/P/4P 20/1
EAN/UPC - Product	046677532420
Order code	532424
Numerator - Quantity Per Pack	1

Numerator - Packs per outer box	20
Material Nr. (12NC)	929001885604
Net Weight (Piece)	0.064 kg
Model Number	9290018856

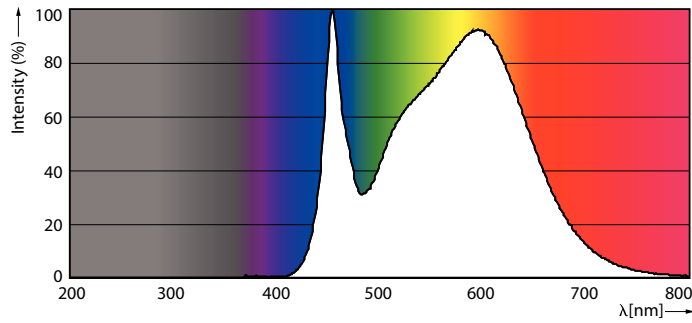
Dimensional drawing



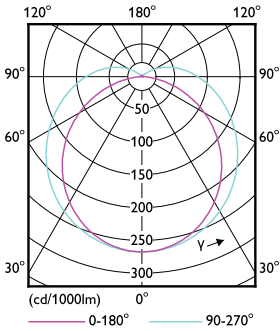
PLED PLC-H 5-13W 580lm 4000K G24q

Product	D	D1	A1	A2	A3
5.5PL-C/LED/13H/840/IF5/P/4P	27 mm	27 mm	91.5 mm	122.4 mm	137.4 mm
20/1					

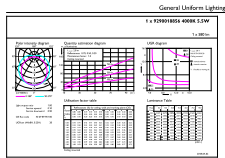
Photometric data



LEDtube PLC 13H 5.5W G24Q 840 15D ND



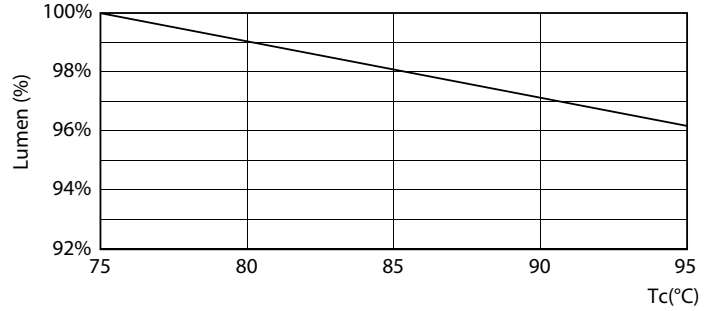
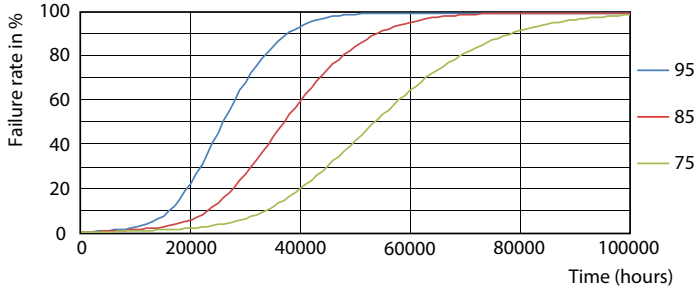
LEDtube PLC 13H 5W GX23-2 827 15D ND



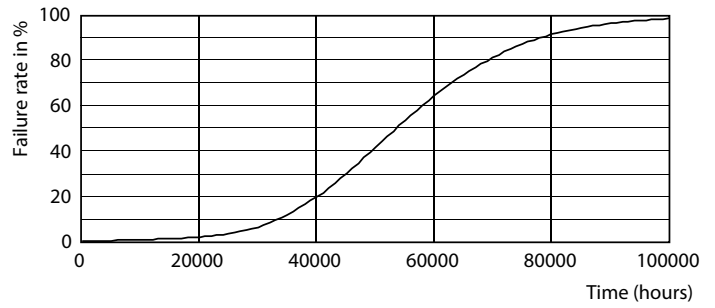
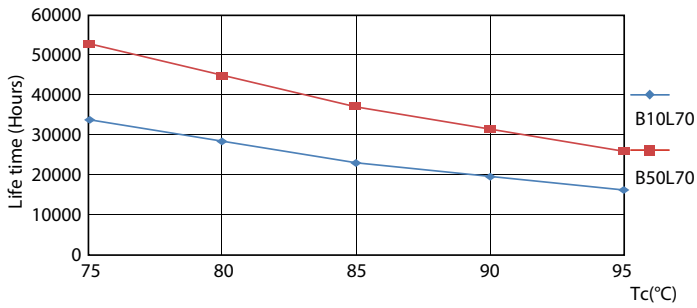
General Uniform Light

LEDtube PLC 13H 5.5W G24Q 840 15D ND

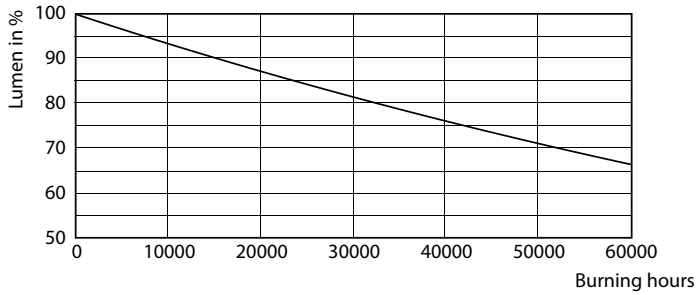
Lifetime



LEDtube PLC 13H 5.5W G24Q 827 15D ND



LEDtube PLC 13H 5W GX23-2 827 15D ND



LEDtube PLC 13H 5W GX23-2 827 15D ND

