



# PL-C/T

## 5.5PL-C/LED/13V/827/IF5/P/4P 20/1

Philips PLED 4-pin & 2-pin lamps are an affordable LED solution to replace compact fluorescent lamps. The product provides a natural lighting effect for use in many lighting applications, and provides instant energy savings, making them an environmentally-friendly solution. Available as replacements for 13W, 26W and 32W compact fluorescent lamps.

### Product data

General Information		Lamp Current (Max)	
Cap-Base	G24Q [G24q]	Lamp Current (Max)	280 mA
Nominal lifetime	50,000 hour(s)	Lamp Current (Min)	130 mA
Switching Cycle	50,000	Wattage Equivalent	13 W
Lighting Technology	LED	Starting Time (Nom)	0.5 s
EU RoHS compliant	Yes	Warm-up time to 60% light	0.5 s
		Power Factor (Fraction)	0.9
		Voltage (Nom)	14-60 V
		UL Type	UL Type A
Light Technical		Temperature	
Color Code	827 [CCT of 2700K]	Ambient temperature range	-4 °F to 113 °F
Beam Angle (Nom)	150 degree(s)	T-Case Maximum (Nom)	158 °F
Luminous Flux	520 lm		
Color Designation	Warm White (WW)	Controls and Dimming	
Correlated Color Temperature (Nom)	2700 K	Dimmable	Yes
Luminous Efficacy (rated) (Nom)	94.00 lm/W		
Color Consistency	<6	Mechanical and Housing	
Color rendering index (CRI)	82	Bulb Finish	Frosted
LLMF At End Of Nominal Lifetime (Nom)	70 %	Bulb Material	Plastic
		Product Length	3-15/16 inch
		Bulb Shape	PL-C
Operating and Electrical			
Line Frequency	25000-100000 Hz		
Input Frequency	25000-100000 Hz		
Power Consumption	5.5 W		

# PL-C/T

## Approval and Application

Energy Saving Product	Yes
Approval Marks	RoHS compliance UL certificate
Energy Consumption kWh/1000 h	- kWh

## Application Conditions

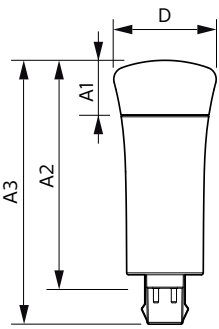
can it be used in closed luminaires	Yes
-------------------------------------	-----

## Product Data

Order product name	5.5PL-C/LED/13V/827/IF5/P/4P 20/1
--------------------	-----------------------------------

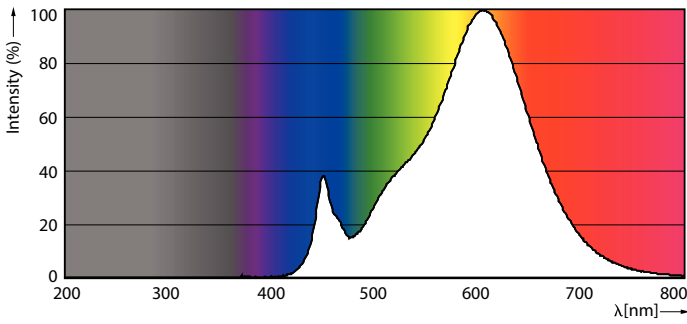
Full product name	5.5PL-C/LED/13V/827/IF5/P/4P 20/1
Order code	532432
Material Nr. (12NC)	929001885704
Numerator - Quantity Per Pack	1
EAN/UPC - Product/Case	046677532437
Numerator - Packs per outer box	20
EAN/UPC - Case	50046677532432

## Dimensional drawing

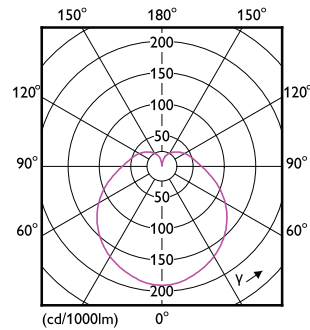


Product	D	A1	A2	A3
5.5PL-C/LED/13V/827/IF5/P/4P 20/1	1-13/16 inch	1 inch	4 inch	4-5/8 inch

## Photometric data

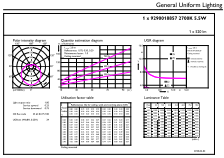


Spectral Power Distribution Colour - 5.5PL-C/LED/13V/827/IF5/P/4P 20/1



Light Distribution Diagram - 5.5PL-C/LED/13V/827/IF5/P/4P 20/1

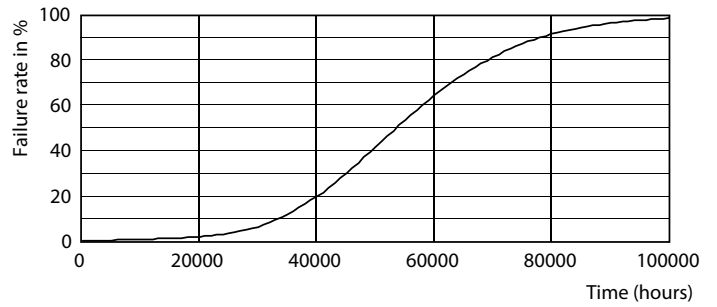
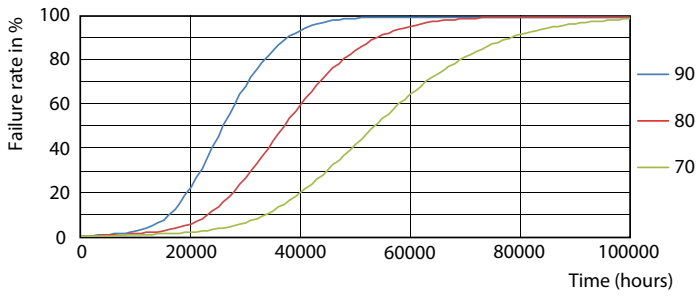
Photometric data



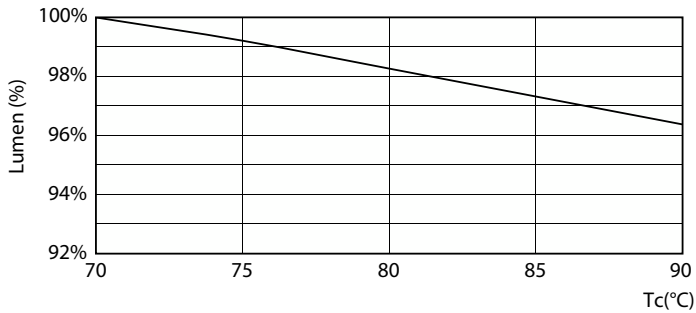
General Uniform Lighting - 5.5PL-C/LED/13V/827/IF5/P/4P 20/1

General uniform lighting - 5.5PL-C/LED/13V/827/IF5/P/4P 20/1

Lifetime

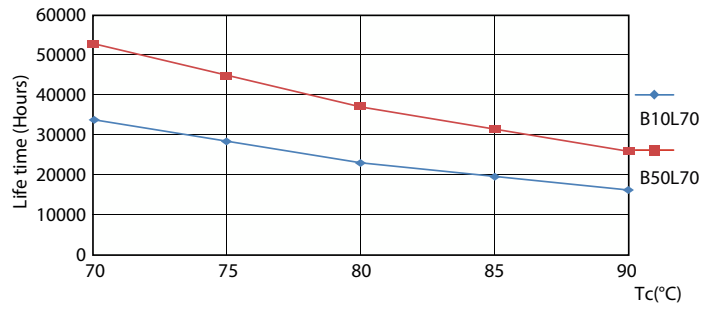


Life Expectancy Diagram - 5.5PL-C/LED/13V/827/IF5/P/4P 20/1



Lumen Maintenance Diagram - 5.5PL-C/LED/13V/827/IF5/P/4P 20/1

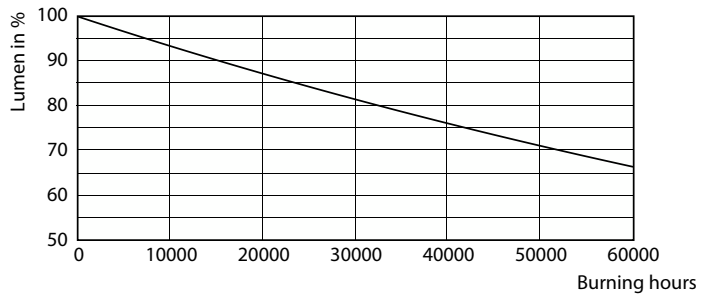
Life Expectancy Diagram - 5.5PL-C/LED/13V/827/IF5/P/4P 20/1



Life Expectancy Diagram - 5.5PL-C/LED/13V/827/IF5/P/4P 20/1

# PL-C/T

## Lifetime



Lumen Maintenance Diagram - 5.5PL-C/LED/13V/827/IF5/P/4P 20/1

