



CorePro LED PL 4pin 2pin

5.5PL-C/LED/13V/827/IF5/P/4P 20/1

The CorePro LED Type A - Ballast Driven (Plug and Play) InstantFit CFL-ni is a great LED solution suitable for replacing both 2-pin and 4-pin CFL fluorescent lamps, using an existing ballast. Both vertical and horizontal options are available with the horizontal version having a rotatable end cap to ensure the light is correctly aimed.

Product data

General Information		Lamp Current (Max)	
Cap-Base	G24Q [G24q]	Lamp Current (Min)	280 mA
Nominal Lifetime (Nom)	50000 h	Starting Time (Nom)	130 mA
Switching Cycle	50000X	Warm Up Time to 60% Light (Nom)	0.5 s
B50L70	50000 h	Power Factor (Nom)	0.9
Light Technical		Voltage (Nom)	14-60 V
Color Code	827 [CCT of 2700K]	Temperature	
Beam Angle (Nom)	150 °	T-Ambient (Max)	45 °C
Luminous Flux (Nom)	520 lm	T-Ambient (Min)	-20 °C
Luminous Flux (Rated) (Nom)	520 lm	T-Storage (Max)	65 °C
Rated Beam Angle	150 °	T-Storage (Min)	-40 °C
Correlated Color Temperature (Nom)	2700 K	T-Case Maximum (Nom)	70 °C
Color Consistency	<6	Controls and Dimming	
Color Rendering Index (Nom)	82	Dimmable	No
LLMF At End Of Nominal Lifetime (Nom)	70 %	Mechanical and Housing	
Operating and Electrical		Product Length	100 mm
Input Frequency	25000-100000 Hz		
Power (Rated) (Nom)	5.5 W		

CorePro LED PL 4pin 2pin

Approval and Application

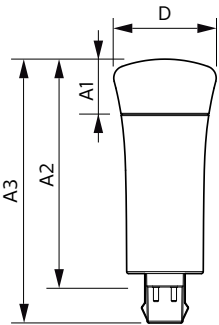
Energy Saving Product	Yes
Approval Marks	UL certificate RoHS compliance

Product Data

Order product name	5.5PL-C/LED/13V/827/IF5/P/4P 20/1
EAN/UPC - Product	046677532437

Order code	929001885704
Numerator - Quantity Per Pack	1
Numerator - Packs per outer box	20
Material Nr. (12NC)	929001885704
Net Weight (Piece)	0.058 kg

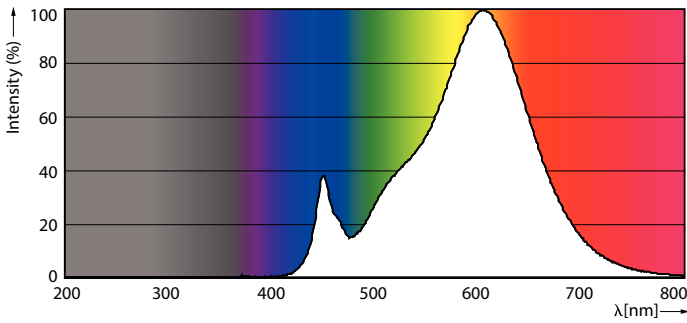
Dimensional drawing



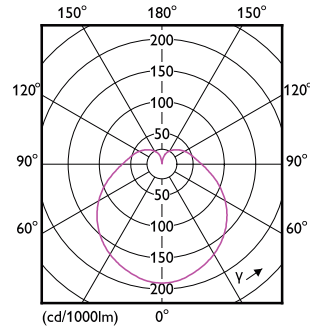
PLED PLC-V 5-13W 550lm 2700K G24q

Product	D	A1	A2	A3
5.5PL-C/LED/13V/827/IF5/P/4P 20/1	45.7 mm	24.6 mm	101.6 mm	117.6 mm

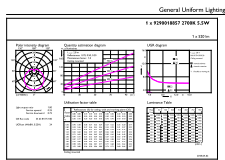
Photometric data



LEDtube PLC 13V 5.5W G24Q 827 15D ND



LEDtube PLC 13V 5W GX23-2 827 15D ND

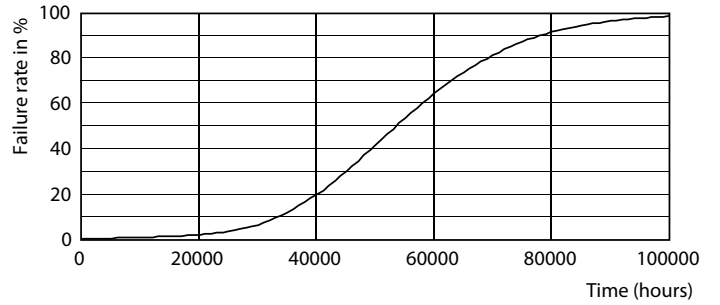
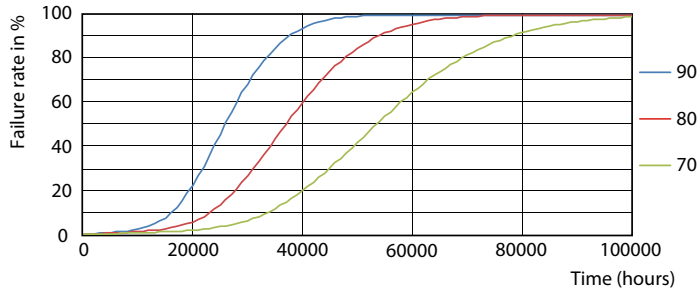


Page 11

LEDtube PLC 13V 5.5W G24Q 827 15D ND

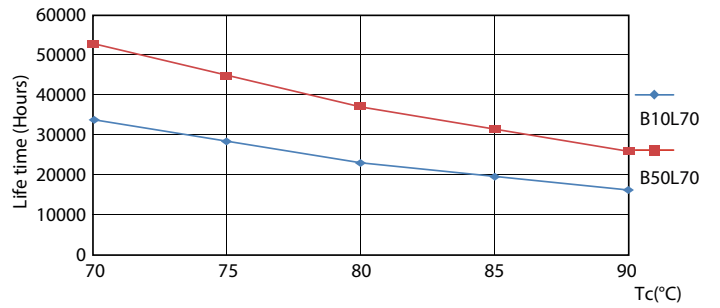
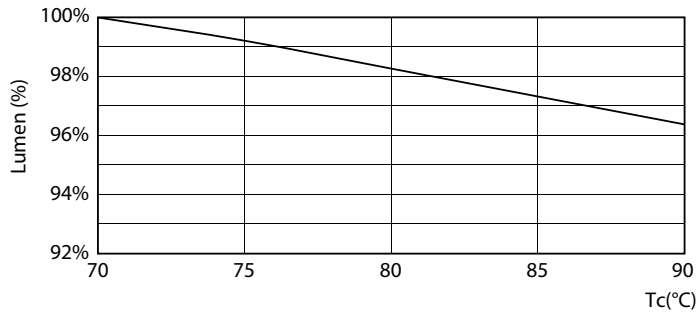
CorePro LED PL 4pin 2pin

Lifetime



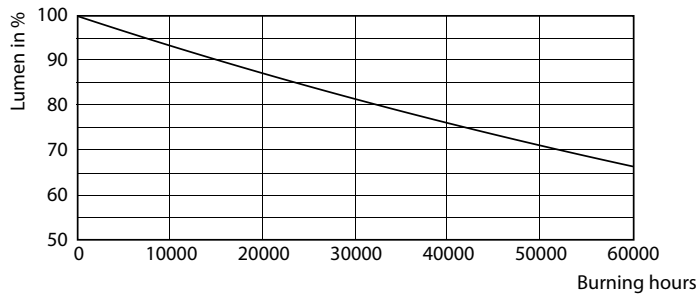
LEDtube PLC 13H 5W GX23-2 827 15D ND

LEDtube PLC 13H 5W GX23-2 827 15D ND



LEDtube PLC 13V 5.5W G24Q 827 15D ND

LEDtube PLC 13H 5W GX23-2 827 15D ND



LEDtube PLC 13H 5W GX23-2 827 15D ND

CorePro LED PL 4pin 2pin

