



PL-C/T

5.5PL-C/LED/13V/835/IF5/P/4P 20/1

Philips PLED 4-pin & 2-pin lamps are an affordable LED solution to replace compact fluorescent lamps. The product provides a natural lighting effect for use in many lighting applications, and provides instant energy savings, making them an environmentally-friendly solution. Available as replacements for 13W, 26W and 32W compact fluorescent lamps.

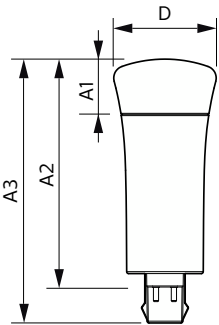
Product data

General Information			
Cap-Base	G24Q [G24q]	Lamp Current (Max)	280 mA
Nominal lifetime	50,000 hour(s)	Lamp Current (Min)	130 mA
Switching Cycle	50,000	Starting Time (Nom)	0.5 s
Lighting Technology	LED	Warm-up time to 60% light	0.5 s
EU RoHS compliant	Yes	Power Factor (Fraction)	0.9
		Voltage (Nom)	14-60 V
		UL Type	Type A - works on ballast
Light Technical			
Color Code	835 [CCT of 3500K]	Temperature	
Beam Angle (Nom)	150 degree(s)	Ambient temperature range	-20 °C to 45 °C
Luminous Flux	550 lm	T-Case Maximum (Nom)	70 °C
Color Designation	White (WH)		
Correlated Color Temperature (Nom)	3500 K	Controls and Dimming	
Luminous Efficacy (rated) (Nom)	100.00 lm/W	Dimmable	Yes
Color Consistency	<6		
Color rendering index (CRI)	82	Mechanical and Housing	
LLMF At End Of Nominal Lifetime (Nom)	70 %	Bulb Material	Plastic
		Product Length	100 mm
		Bulb Shape	PL-C
Operating and Electrical			
Line Frequency	25000-100000 Hz	Approval and Application	
Input Frequency	25000-100000 Hz	Energy Saving Product	Yes
Power Consumption	5.5 W		

Approval Marks	RoHS compliance UL certificate
Energy Consumption kWh/1000 h	- kWh
Product Data	
Order product name	5.5PL-C/LED/13V/835/IF5/P/4P 20/1
Full product name	5.5PL-C/LED/13V/835/IF5/P/4P 20/1
Order code	532457

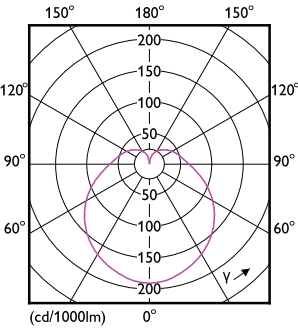
Material Nr. (12NC)	929001885904
Numerator - Quantity Per Pack	1
EAN/UPC - Product/Case	046677532451
Numerator - Packs per outer box	20
EAN/UPC - Case	50046677532456

Dimensional drawing

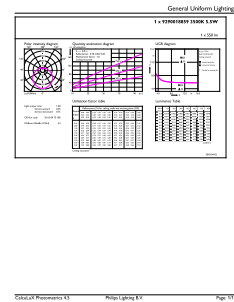


Product	D	A1	A2	A3
5.5PL-C/LED/13V/835/IF5/P/4P 20/1	45.7 mm	24.6 mm	101.6 mm	117.6 mm

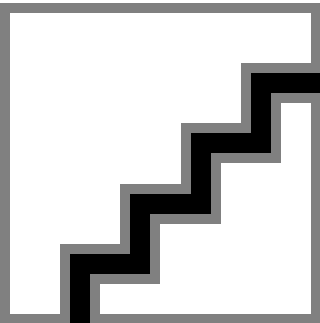
Photometric data



Light Distribution Diagram - 5.5PL-C/LED/13V/835/IF5/P/4P 20/1

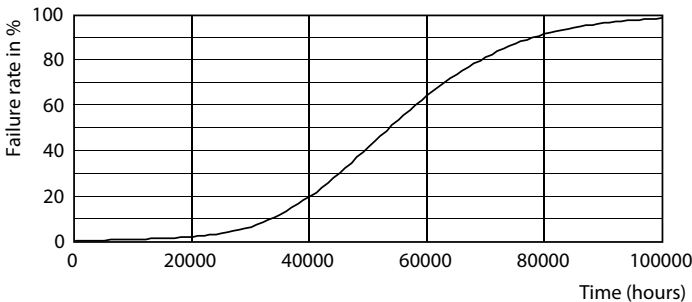
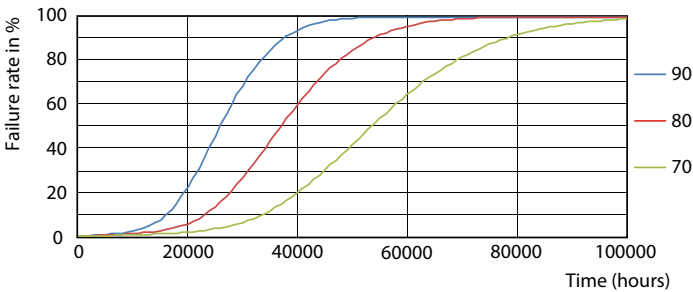


General uniform lighting - 5.5PL-C/LED/13V/835/IF5/P/4P 20/1

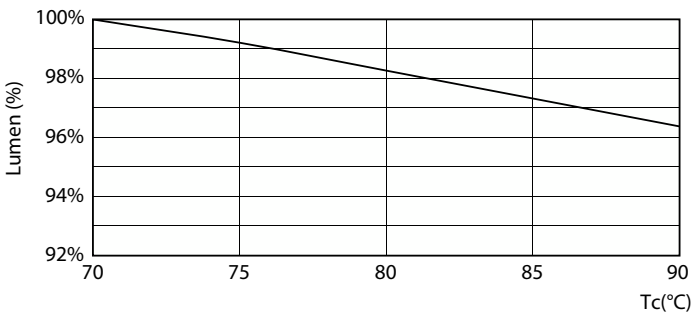


Spectral Power Distribution Colour - 5.5PL-C/LED/13V/835/IF5/P/4P 20/1

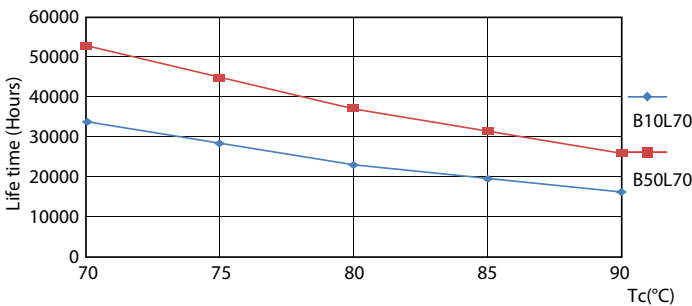
Lifetime



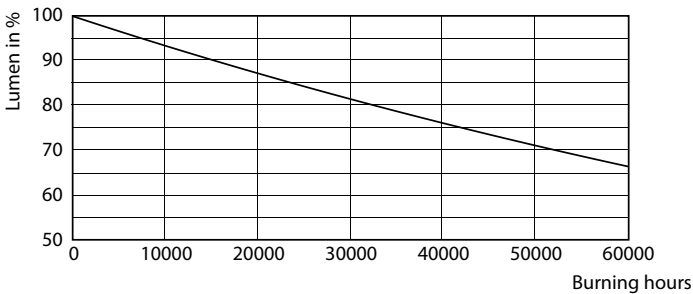
Life Expectancy Diagram - 5.5PL-C/LED/13V/835/IF5/P/4P 20/1



Life Expectancy Diagram - 5.5PL-C/LED/13V/835/IF5/P/4P 20/1



Lumen Maintenance Diagram - 5.5PL-C/LED/13V/835/IF5/P/4P 20/1



Life Expectancy Diagram - 5.5PL-C/LED/13V/835/IF5/P/4P 20/1

Lumen Maintenance Diagram - 5.5PL-C/LED/13V/835/IF5/P/4P 20/1

