



PL-C/T

5.5PL-C/LED/13V/835/IF5/P/4P 20/1

Philips PLED 4-pin & 2-pin lamps are an affordable LED solution to replace compact fluorescent lamps. The product provides a natural lighting effect for use in many lighting applications, and provides instant energy savings, making them an environmentally-friendly solution. Available as replacements for 13W, 26W and 32W compact fluorescent lamps.

Product data

General Information	
Base	G24Q [G24q]
EU RoHS compliant	Yes
Nominal Lifetime (Nom)	50000 h
Switching Cycle	50000X
Light Technical	
Color Code	835 [CCT of 3500K]
Beam Angle (Nom)	150 °
Initial lumen (Nom)	550 lm
Color Designation	White (WH)
Correlated Color Temperature (Nom)	3500 K
Luminous Efficacy (rated) (Nom)	100.00 lm/W
Color Consistency	<6
Color Rendering Index (Nom)	82
LLMF At End Of Nominal Lifetime (Nom)	70 %
Operating and Electrical	
Input Frequency	25000-100000 Hz
Power (Rated) (Nom)	5.5 W
Lamp Current (Max)	280 mA
Lamp Current (Min)	130 mA

Starting Time (Nom)	0.5 s
Warm Up Time to 60% Light (Nom)	0.5 s
UL Type	Type A - works on ballast
Power Factor (Nom)	0.9
Voltage (Nom)	14-60 V

Temperature	
T-Ambient (Max)	45 °C
T-Ambient (Min)	-20 °C
T-Storage (Max)	65 °C
T-Storage (Min)	-40 °C
T-Case Maximum (Nom)	70 °C

Controls and Dimming	
Dimmable	Yes

Mechanical and Housing	
Bulb Material	Plastic
Product Length	4 in
Bulb Shape	Tube, single-ended

PL-C/T

Approval and Application

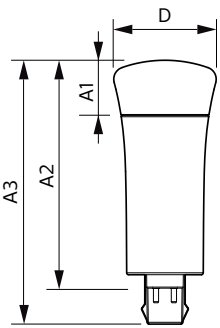
Energy Efficiency Label (EEL)	Not applicable
Energy Saving Product	Yes
Approbation Marks	RoHS compliance UL certificate
Energy Consumption kWh/1000 h	- kWh

Product Data

Order product name	5.5PL-C/LED/13V/835/IF5/P/4P 20/1
EAN/UPC - Product	046677532451

Order code	532457
Numerator - Quantity Per Pack	1
Numerator - Packs per outer box	20
Material Nr. (12NC)	929001885904
Net Weight (Piece)	0.058 kg
Model Number	9290018859

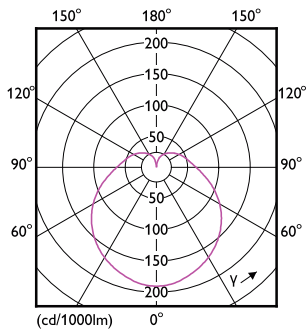
Dimensional drawing



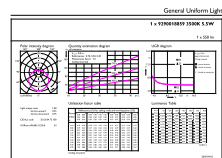
PLED PLC-V 5-13W 580lm 3500K G24q

Product	D	A1	A2	A3
5.5PL-C/LED/13V/835/IF5/P/4P 20/1	45.7 mm	24.6 mm	101.6 mm	117.6 mm

Photometric data

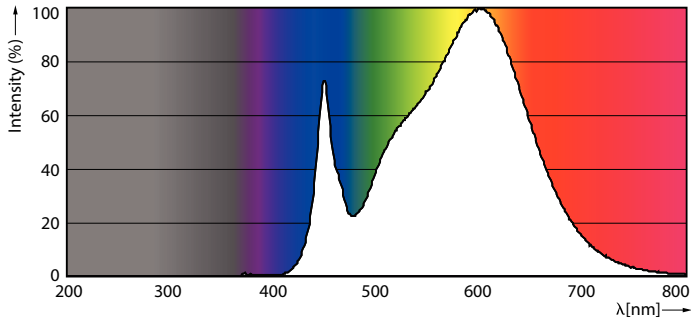


LEDtube PLC 13V 5W GX23-2 827 15D ND



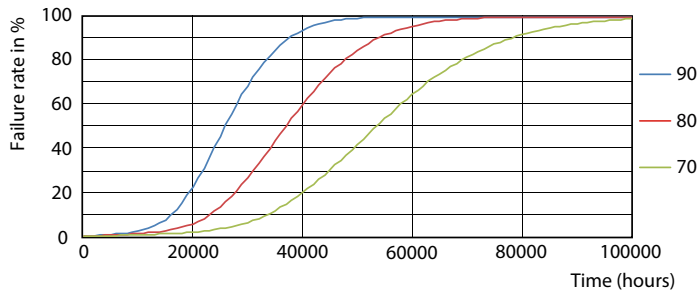
LEDtube PLC 13V 5.5W G24Q 835 15D ND

Photometric data

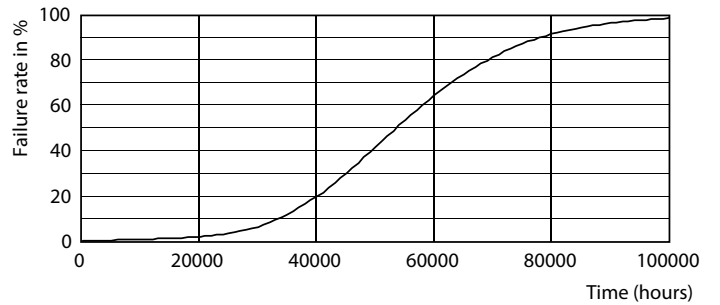


LEDtube PLC 13V 5.5W G24Q 835 15D ND

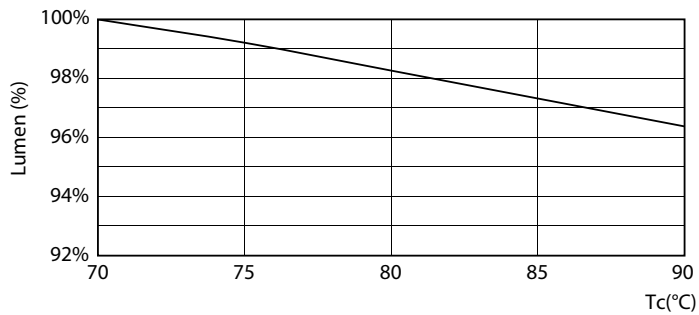
Lifetime



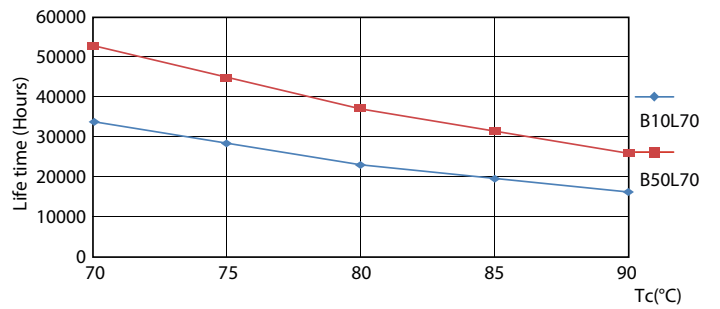
LEDtube PLC 13H 5W GX23-2 827 15D ND



LEDtube PLC 13H 5W GX23-2 827 15D ND



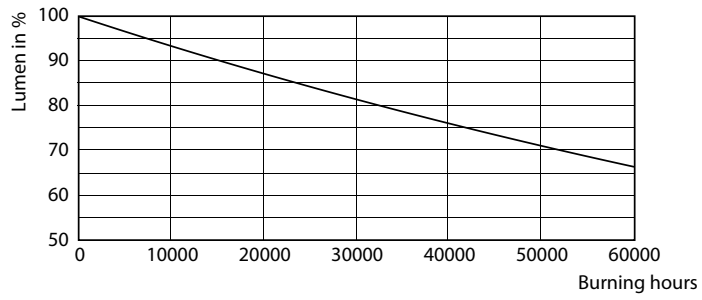
LEDtube PLC 13V 5.5W G24Q 827 15D ND



LEDtube PLC 13H 5W GX23-2 827 15D ND

PL-C/T

Lifetime



LEDtube PLC 13H 5W GX23-2 827 15D ND

