



PL-L

16.5PL-L/PER/22/830/IF22/P 4P 10/1

Philips InstantFit LED lamps make the transition to LED from CFL lamps as simple as replacing a lamp. With a wide array of color temperatures, the InstantFit LED lamps can quickly and effectively replace compact fluorescent lamps.

Product data

General Information	
Cap-Base	2G11 [2G11]
RoHS mark	RoHS mark
Nominal Lifetime (Nom)	50000 h
Switching Cycle	50000X
B50L70	50000 h

Light Technical	
Color Code	830 [CCT of 3000K]
Beam Angle (Nom)	160 °
Luminous Flux (Nom)	2200 lm
Luminous Flux (Rated) (Nom)	2200 lm
Rated Beam Angle	160 °
Correlated Color Temperature (Nom)	3000 K
Color Consistency	<6
Color Rendering Index (Nom)	82
LLMF At End Of Nominal Lifetime (Nom)	70 %

Operating and Electrical	
Input Frequency	40000-160000 Hz
Power (Rated) (Nom)	16.5 W
Lamp Current (Max)	400 mA
Lamp Current (Min)	200 mA
Starting Time (Nom)	0.5 s

Warm Up Time to 60% Light (Nom)	0.5 s
Power Factor (Nom)	0.9
Voltage (Nom)	70-110 V

Temperature	
T-Ambient (Max)	45 °C
T-Ambient (Min)	-20 °C
T-Storage (Max)	65 °C
T-Storage (Min)	-40 °C
T-Case Maximum (Nom)	75 °C

Controls and Dimming	
Dimmable	No

Approval and Application	
Energy Saving Product	Yes
Approval Marks	UL certificate RoHS compliance DLC compliance
DesignLights Consortium Qualified Product List	DesignLights Consortium Qualified Product List

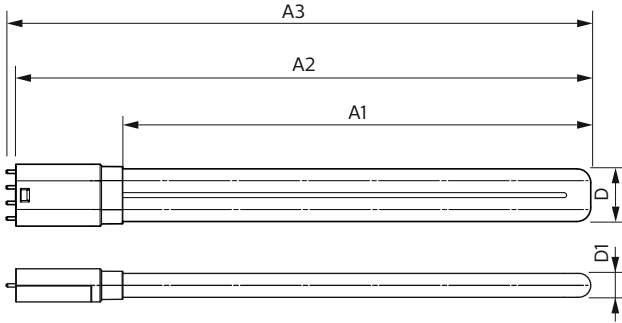
Product Data	
Order product name	16.5PL-L/PER/22/830/IF22/P 4P 10/1
EAN/UPC - Product	046677532895

PL-L

Order code	929001893504
Numerator - Quantity Per Pack	1
Numerator - Packs per outer box	10
Material Nr. (12NC)	929001893504

Net Weight (Piece)	0.170 kg
--------------------	----------

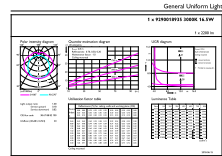
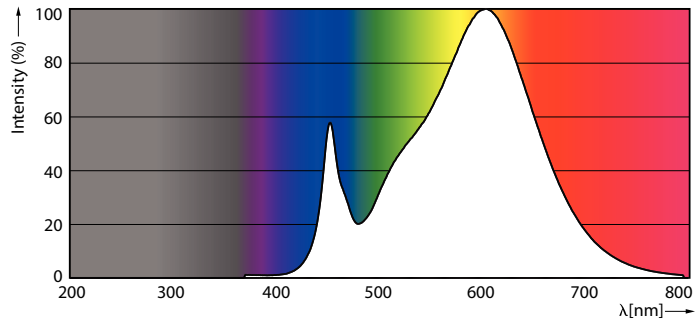
Dimensional drawing



LED PLL MasterClass 2200lm 3000K

Product	D	D1	A1	A2	A3
16.5PL-L/PER/22/830/IF22/P 4P 10/1	40.6 mm	20 mm	501 mm	564 mm	570.6 mm

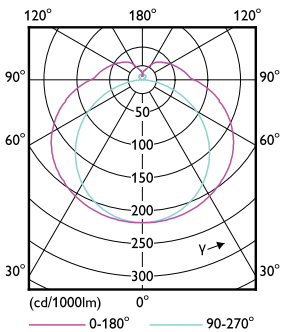
Photometric data



General Lighting Data

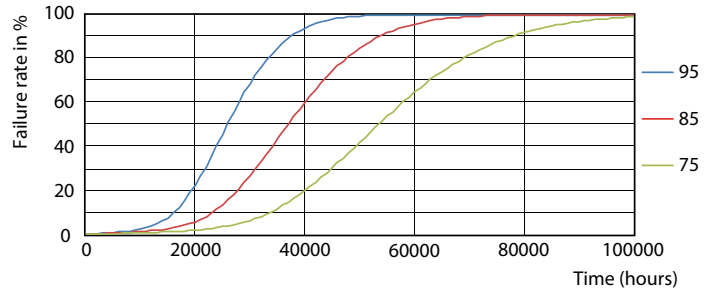
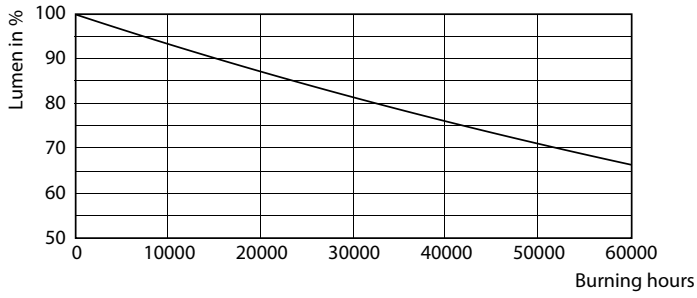
LEDtube PLC 400mm 16-5W 2G11 830 2000lm

16-5W 2G11 830 3000K

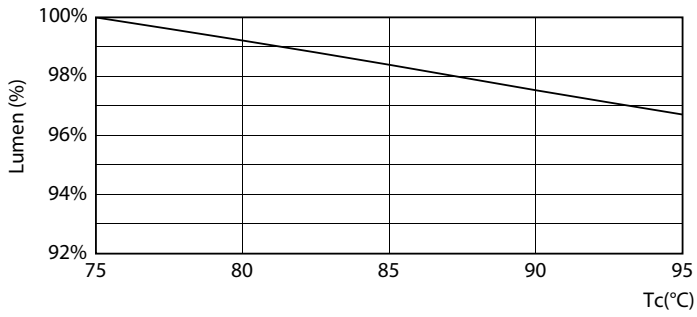


16-5W 2G11 830 3000K

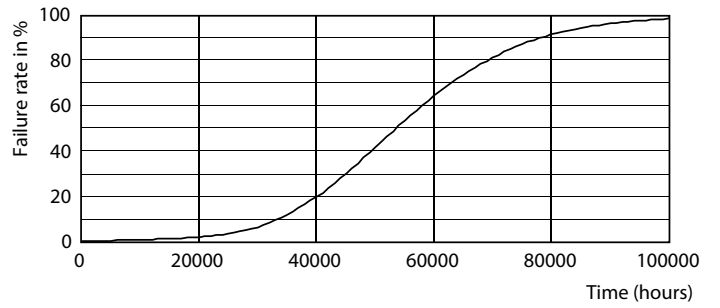
Lifetime



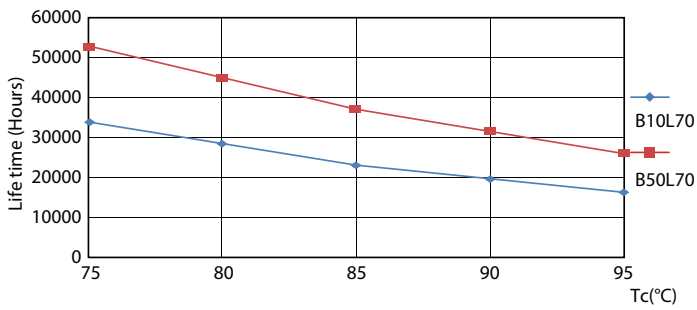
16-5W 2G11



16-5W 2G11



16-5W 2G11



16-5W 2G11

16-5W 2G11

