



PL-L

16.5PL-L/COR/22-835/IF22/P/4P/DIM 10/1

Philips InstantFit LED lamps make the transition to LED from CFL lamps as simple as replacing a lamp. With a wide array of color temperatures, the InstantFit LED lamps can quickly and effectively replace compact fluorescent lamps.

Product data

General Information	
Base	2G11 [2G11]
EU RoHS compliant	Yes
Nominal Lifetime (Nom)	50000 h
Switching Cycle	50000X
Light Technical	
Color Code	835 [CCT of 3500K]
Beam Angle (Nom)	160 °
Initial lumen (Nom)	2200 lm
Color Designation	White (WH)
Correlated Color Temperature (Nom)	3500 K
Luminous Efficacy (rated) (Nom)	133.00 lm/W
Color Consistency	<6
Color Rendering Index (Nom)	82
LLMF At End Of Nominal Lifetime (Nom)	70 %
Operating and Electrical	
Input Frequency	40000-160000 Hz
Power (Rated) (Nom)	16.5 W
Lamp Current (Max)	400 mA
Lamp Current (Min)	200 mA
Starting Time (Nom)	0.5 s
Warm Up Time to 60% Light (Nom)	0.5 s

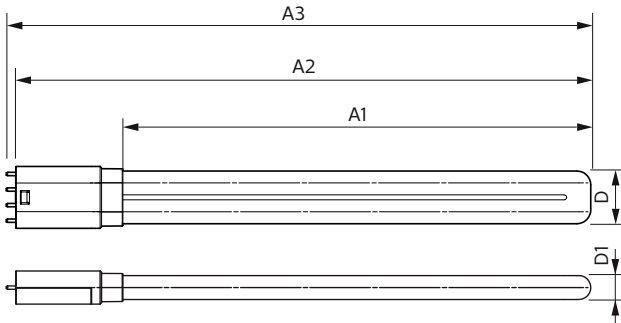
UL Type	Type A - works on ballast
Power Factor (Nom)	0.9
Voltage (Nom)	70-110 V
Temperature	
T-Ambient (Max)	45 °C
T-Ambient (Min)	-20 °C
T-Storage (Max)	65 °C
T-Storage (Min)	-40 °C
T-Case Maximum (Nom)	75 °C
Controls and Dimming	
Dimmable	No
Mechanical and Housing	
Product Length	23 in
Bulb Shape	Tube, single-ended
Approval and Application	
Energy Saving Product	Yes
Approbation Marks	UL certificate RoHS compliance DLC compliance
Energy Consumption kWh/1000 h	- kWh

PL-L

Energy Certifications	DLC Standard
Product Data	
Order product name	16.5PL-L/COR/22-835/IF22/P/4P/DIM 10/1
EAN/UPC - Product	046677532901
Order code	532903
Numerator - Quantity Per Pack	1

Numerator - Packs per outer box	10
Material Nr. (12NC)	929001893604
Net Weight (Piece)	0.170 kg
Model Number	9290018936

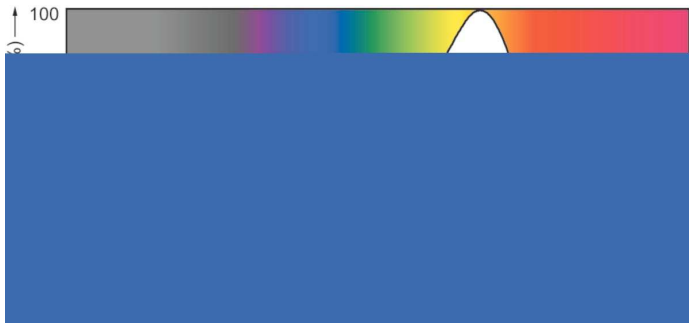
Dimensional drawing



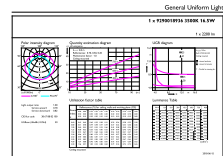
LED PLL MasterClass 2200lm 3500K

Product	D	D1	A1	A2	A3
16.5PL-L/COR/22-835/IF22/P/4P/DIM 10/1	40.6 mm	20 mm	501 mm	564 mm	570.6 mm

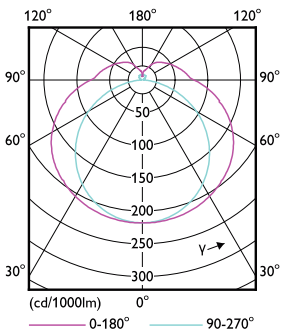
Photometric data



LEDtube 16.5 W, 835, G13, T8, UHO

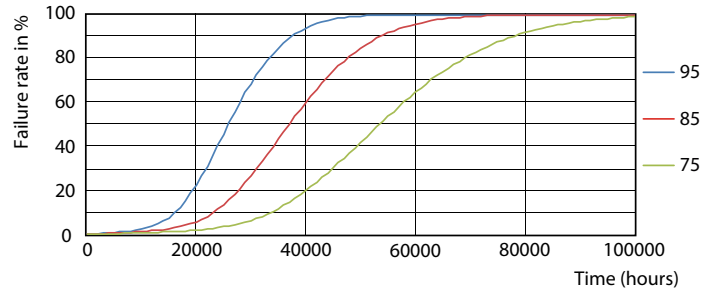
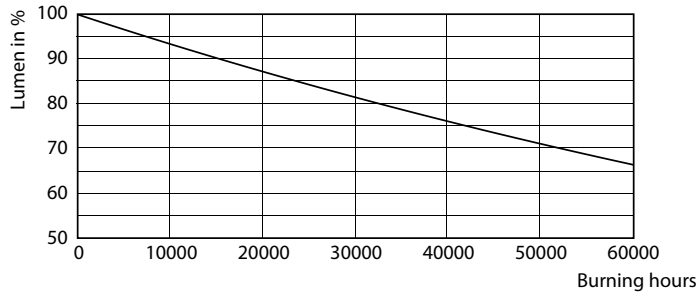


16-5W 2G11 835 3500K



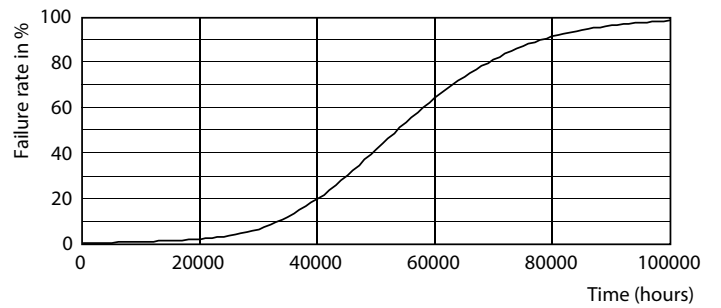
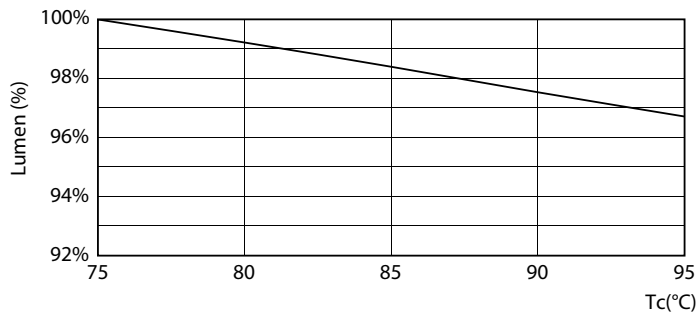
16-5W 2G11 830 3000K

Lifetime



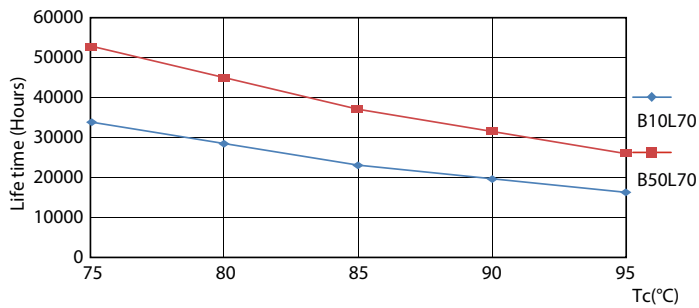
16-5W 2G11

16-5W 2G11



16-5W 2G11

16-5W 2G11



16-5W 2G11

