



PL-L

16.5PL-L/PER/22/840/IF23/P 4P 10/1

Philips InstantFit LED lamps make the transition to LED from CFL lamps as simple as replacing a lamp. With a wide array of color temperatures, the InstantFit LED lamps can quickly and effectively replace compact fluorescent lamps.

Product data

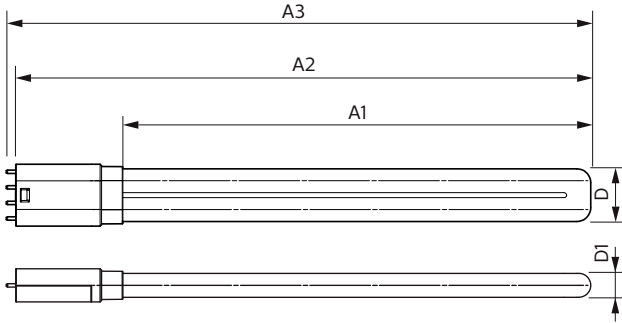
General Information		Warm Up Time to 60% Light (Nom)	
Cap-Base	2G11 [2G11]		0.5 s
RoHS mark	RoHS mark	Power Factor (Nom)	0.9
Nominal Lifetime (Nom)	50000 h	Voltage (Nom)	70-110 V
Switching Cycle	50000X	Temperature	
B50L70	50000 h	T-Ambient (Max)	45 °C
Light Technical		T-Ambient (Min)	-20 °C
Color Code	841 [CCT of 4100K (841)]	T-Storage (Max)	65 °C
Beam Angle (Nom)	160 °	T-Storage (Min)	-40 °C
Luminous Flux (Nom)	2300 lm	T-Case Maximum (Nom)	75 °C
Luminous Flux (Rated) (Nom)	2300 lm	Controls and Dimming	
Rated Beam Angle	160 °	Dimmable	No
Correlated Color Temperature (Nom)	4000 K	Approval and Application	
Color Consistency	<6	Energy Saving Product	Yes
Color Rendering Index (Nom)	82	Approval Marks	UL certificate RoHS compliance DLC compliance
LLMF At End Of Nominal Lifetime (Nom)	70 %	Energy Certifications	DLC Standard
Operating and Electrical		DesignLights Consortium Qualified Product	-
Input Frequency	40000-160000 Hz	List	
Power (Rated) (Nom)	16.5 W	Product Data	
Lamp Current (Max)	400 mA	Order product name	16.5PL-L/PER/22/840/IF23/P 4P 10/1
Lamp Current (Min)	200 mA		
Starting Time (Nom)	0.5 s		

PL-L

EAN/UPC - Product	046677532918
Order code	532911
Numerator - Quantity Per Pack	1
Numerator - Packs per outer box	10

Material Nr. (12NC)	929001893704
Net Weight (Piece)	0.170 kg

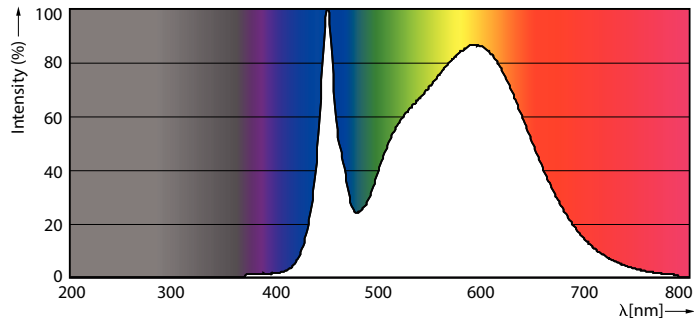
Dimensional drawing



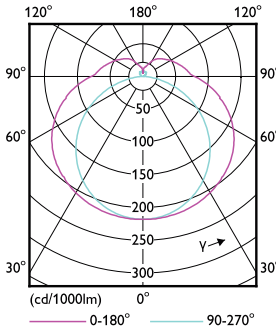
LED PLL MasterClass 2200lm 4000K

Product	D	D1	A1	A2	A3
16.5PL-L/PER/22/840/IF23/P 4P 10/1	40.6 mm	20 mm	501 mm	564 mm	570.6 mm

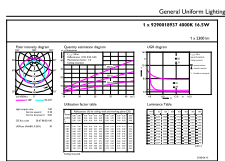
Photometric data



16-5W 2G11



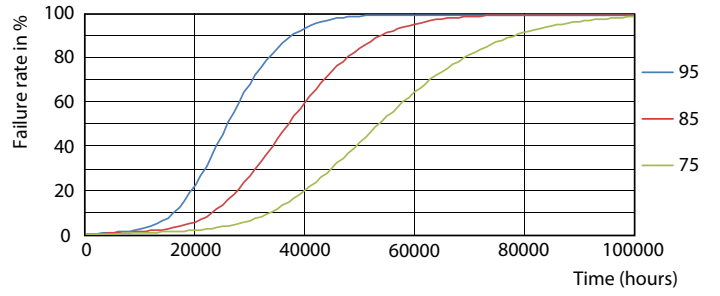
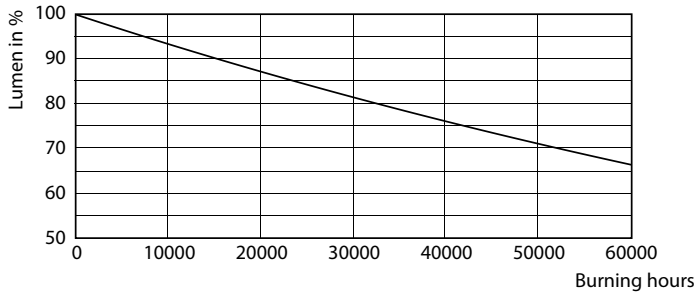
16-5W 2G11 830 3000K



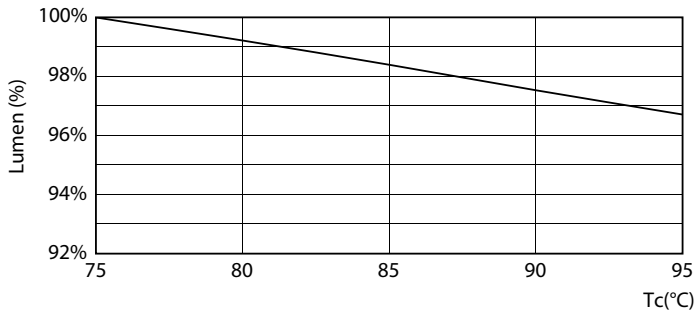
© 2019 Philips Lighting B.V. Page 11

16-5W 2G11 840 4000K

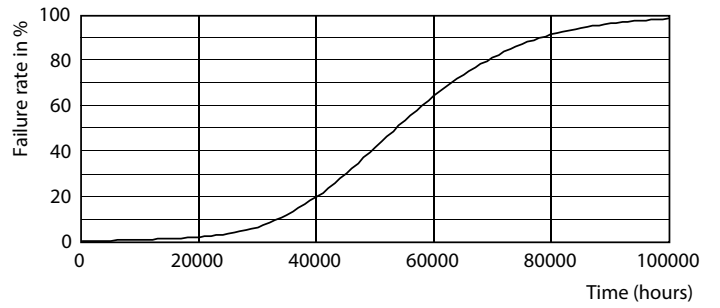
Lifetime



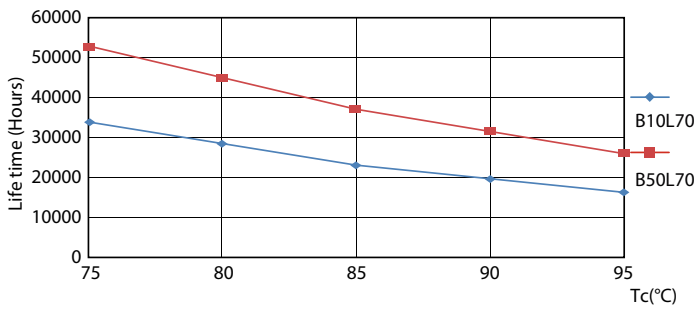
16-5W 2G11



16-5W 2G11



16-5W 2G11



16-5W 2G11

16-5W 2G11

