



PL-L

16.5PL-L/PER/22/840/IF23/P 4P 10/1

Philips InstantFit LED lamps make the transition to LED from CFL lamps as simple as replacing a lamp. With a wide array of color temperatures, the InstantFit LED lamps can quickly and effectively replace compact fluorescent lamps.

Product data

General Information	
Cap-Base	2G11 [2G11]
RoHS mark	RoHS mark
Nominal Lifetime (Nom)	50000 h
Switching Cycle	50000X
B50L70	50000 h

Light Technical	
Color Code	840 [CCT of 4000K]
Beam Angle (Nom)	160 °
Luminous Flux (Nom)	2300 lm
Luminous Flux (Rated) (Nom)	2300 lm
Rated Beam Angle	160 °
Correlated Color Temperature (Nom)	4000 K
Color Consistency	<6
Color Rendering Index (Nom)	82
LLMF At End Of Nominal Lifetime (Nom)	70 %

Operating and Electrical	
Input Frequency	40000-160000 Hz
Power (Rated) (Nom)	16.5 W
Lamp Current (Max)	400 mA
Lamp Current (Min)	200 mA
Starting Time (Nom)	0.5 s

Warm Up Time to 60% Light (Nom)	0.5 s
Power Factor (Nom)	0.9
Voltage (Nom)	70-110 V

Temperature	
T-Ambient (Max)	45 °C
T-Ambient (Min)	-20 °C
T-Storage (Max)	65 °C
T-Storage (Min)	-40 °C
T-Case Maximum (Nom)	75 °C

Controls and Dimming	
Dimmable	No

Approval and Application	
Energy Saving Product	Yes
Approval Marks	UL certificate RoHS compliance DLC compliance
Energy Certifications	DLC Standard
DesignLights Consortium Qualified Product List	-

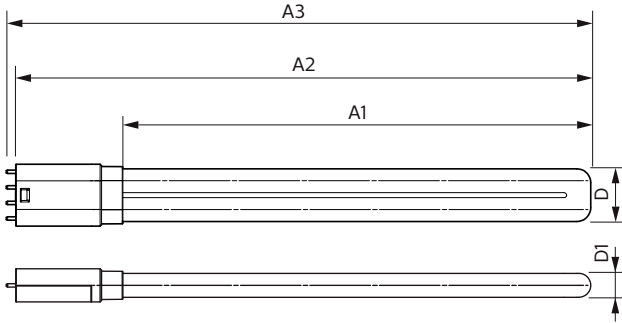
Product Data	
Order product name	16.5PL-L/PER/22/840/IF23/P 4P 10/1
EAN/UPC - Product	046677532918

PL-L

Order code	929001893704
Numerator - Quantity Per Pack	1
Numerator - Packs per outer box	10
Material Nr. (12NC)	929001893704

Net Weight (Piece)	0.170 kg
--------------------	----------

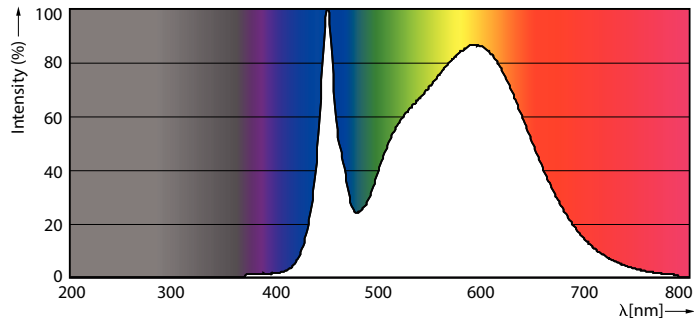
Dimensional drawing



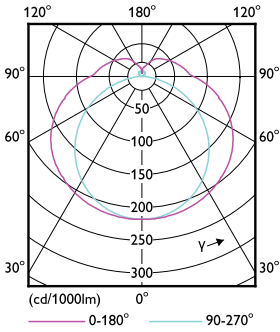
LED PLL MasterClass 2200lm 4000K

Product	D	D1	A1	A2	A3
16.5PL-L/PER/22/840/IF23/P 4P 10/1	40.6 mm	20 mm	501 mm	564 mm	570.6 mm

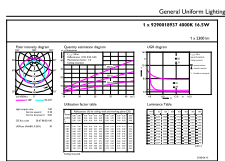
Photometric data



16-5W 2G11



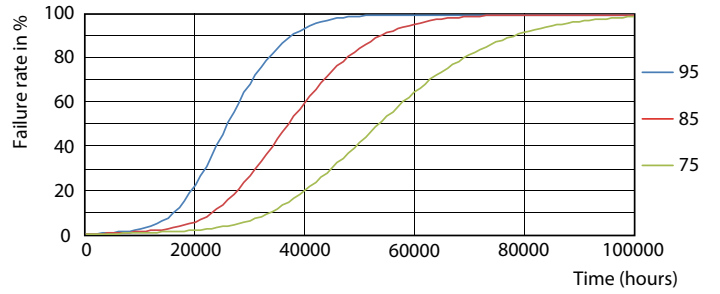
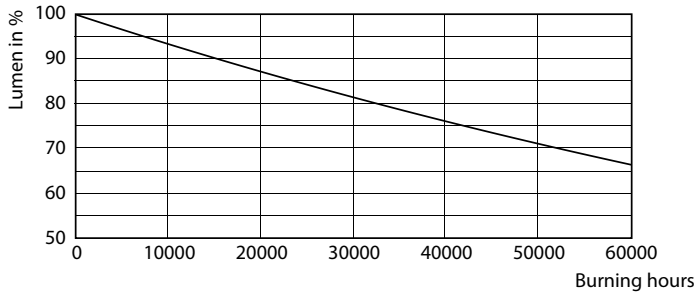
16-5W 2G11 830 3000K



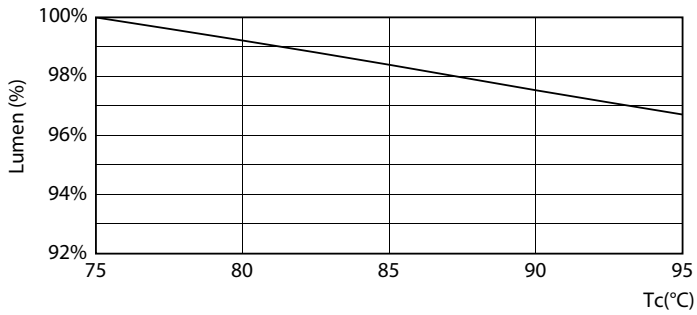
© 2019 Philips Lighting B.V. Page 11

16-5W 2G11 840 4000K

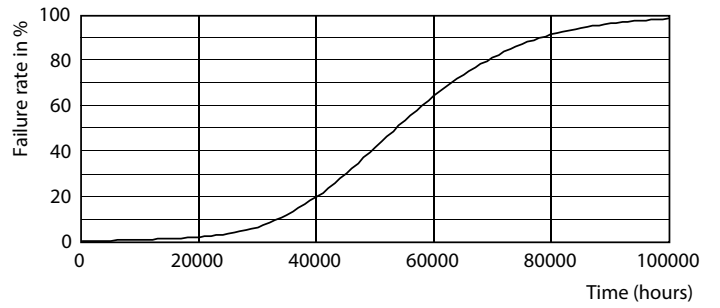
Lifetime



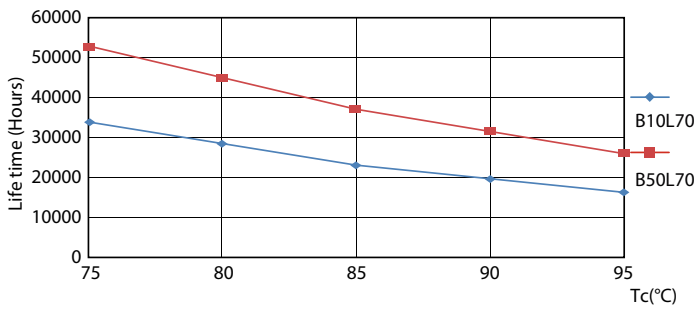
16-5W 2G11



16-5W 2G11



16-5W 2G11



16-5W 2G11

16-5W 2G11

