



# MASTER LEDtube Mains T5

## MAS LEDtube 1200mm HO 26W 830 T5

The new Philips Master LEDtube Mains T5 brings simplicity to your lighting project. You don't need to pay attention to the driver technology anymore. Thanks to a unique design, Philips MASTER LEDtube Mains T5 installs in luminaires operating on mains power connection. So simple to operate! Perfectly safe, reliable & easy to install Philips MASTER LEDtube Mains T5 is the ideal alternative to standard fluorescent tubes to maximize value over lifetime with high energy saving and lower maintenance costs.

### Product data

General Information	
Cap-Base	G5 [ G5]
Nominal Lifetime (Nom)	50000 h
Switching Cycle	200000X
B50L70	50000 h

Light Technical	
Color Code	830 [ CCT of 3000K]
Beam Angle (Nom)	200 °
Luminous Flux (Nom)	3600 lm
Luminous Flux (Rated) (Nom)	3600 lm
Rated Beam Angle	200 °
Correlated Color Temperature (Nom)	3000 K
Color Consistency	<6
Color Rendering Index (Nom)	80
LLMF At End Of Nominal Lifetime (Nom)	70 %

Operating and Electrical	
Input Frequency	50 to 60 Hz
Power (Rated) (Nom)	26 W
Lamp Current (Nom)	150 mA
Starting Time (Nom)	0.5 s
Warm Up Time to 60% Light (Nom)	0.5 s
Power Factor (Nom)	0.9
Voltage (Nom)	220-240 V

Temperature	
T-Ambient (Max)	45 °C
T-Ambient (Min)	-20 °C
T-Storage (Max)	65 °C
T-Storage (Min)	-40 °C
T-Case Maximum (Nom)	72.1 °C

# MASTER LEDtube Mains T5

## Controls and Dimming

Dimmable	No
----------	----

## Mechanical and Housing

Product Length	1200 mm
----------------	---------

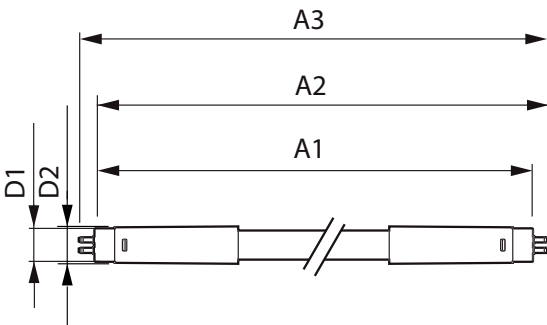
## Approval and Application

Energy Efficiency Label (EEL)	A++
Energy Saving Product	Yes
Approval Marks	CE marking RoHS compliance KEMA Keur certificate
Energy Consumption kWh/1000 h	26 kWh

## Product Data

Full product code	871869681921000
Order product name	MAS LEDtube 1200mm HO 26W 830 T5
EAN/UPC - Product	8718696819210
Order code	929001908502
Numerator - Quantity Per Pack	1
Numerator - Packs per outer box	10
Material Nr. (12NC)	929001908502
Net Weight (Piece)	0.215 kg

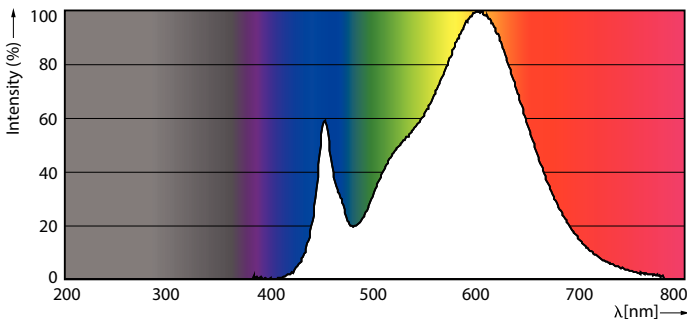
## Dimensional drawing



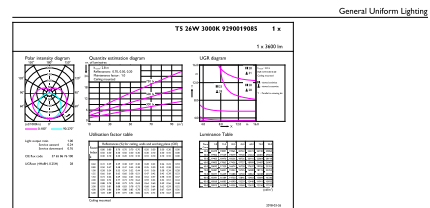
TLED 1200mm 26W-54W 3800lm 200D 3000K G5

Product	D1	D2	A1	A2	A3
MAS LEDtube 1200mm HO 26W 830 T5	15 mm	16.9 mm	1149 mm	1156.1 mm	1163.2 mm

## Photometric data



26W G5

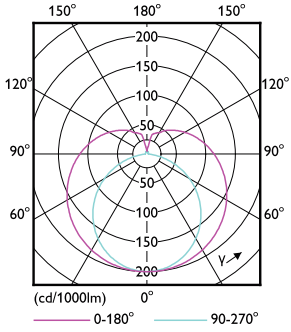


General Uniform Lighting  
CircuLux Photonics 4.5 Philips Lighting B.V. Page 1/1

26W G5 830 3000K

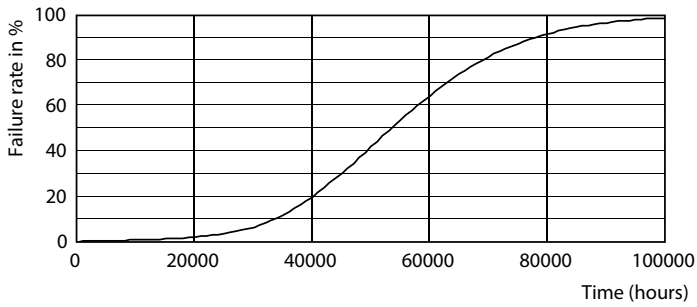
# MASTER LEDtube Mains T5

## Photometric data

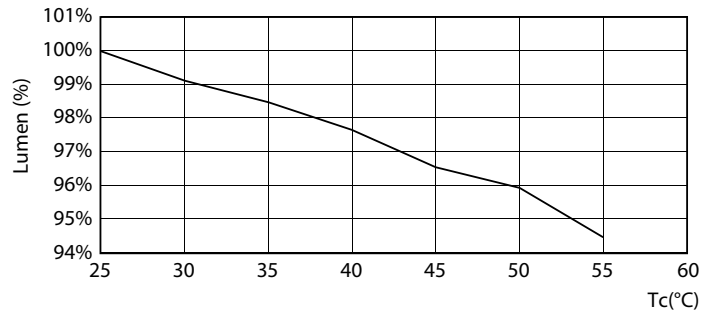


26W G5 830 3000K

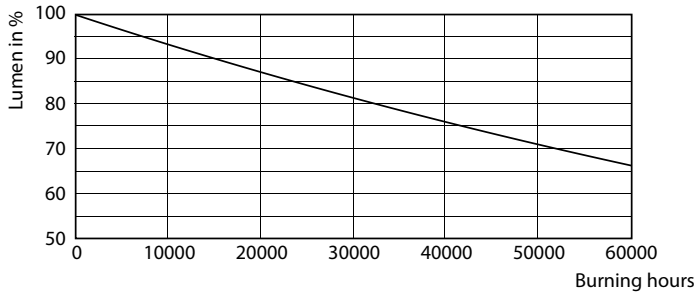
## Lifetime



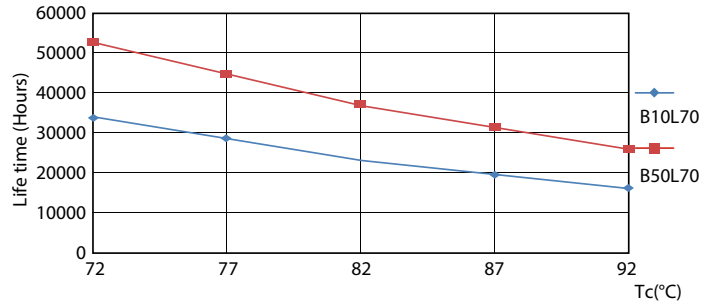
26W G5



26W G5



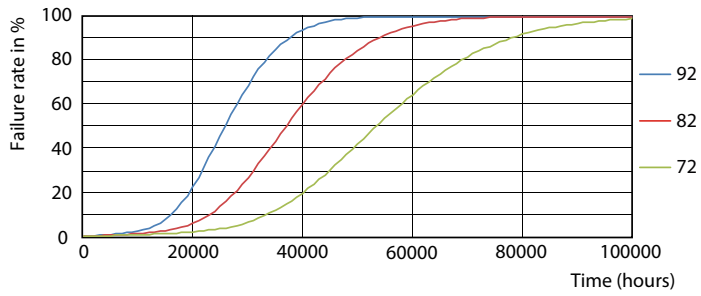
26W G5



26W G5

# MASTER LEDtube Mains T5

## Lifetime



26W G5

