



LEDtube Mains T5

MAS LEDtube 1200mm HO 26W 865 T5 BR

The new Philips Master LEDtube Mains T5 brings simplicity to your lighting project. You don't need to pay attention to the driver technology anymore. Thanks to a unique design, Philips MASTER LEDtube Mains T5 directly installs in luminaires operating on mains power connection. So simple to operate and no need to carry double stock of products! . Perfectly safe, reliable & easy to install Philips MASTER LEDtube Mains T5 is the ideal alternative to standard fluorescent tubes to maximize value overlifetime with high energy saving and lower maintenance costs.

Product data

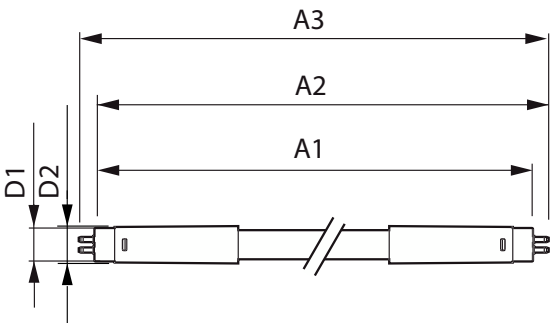
General Information		Input Frequency	
Cap-Base	G5 [G5]	Power Consumption	26 W
Nominal lifetime	50,000 hour(s)	Starting Time (Nom)	0.5 s
Switching Cycle	200,000	Warm-up time to 60% light	0.5 s
Lighting Technology	LED	Power Factor (Fraction)	0.9
EU RoHS compliant	Yes	Voltage (Nom)	220-240 V
Light Technical		Temperature	
Color Code	865 [CCT of 6500K]	Ambient temperature range	-20 °C to 45 °C
Beam Angle (Nom)	200 degree(s)	T-Case Maximum (Nom)	72.1 °C
Luminous Flux	3,900 lm	Controls and Dimming	
Color Designation	Cool Daylight	Dimmable	No
Correlated Color Temperature (Nom)	6500 K	Mechanical and Housing	
Luminous Efficacy (rated) (Nom)	150.00 lm/W	Product Length	1,200 mm
Color Consistency	<6	Bulb Shape	Tube, double-ended
Color rendering index (CRI)	80	Approval and Application	
LLMF At End Of Nominal Lifetime (Nom)	70 %	Energy Saving Product	Yes
Operating and Electrical			
Line Frequency	50 to 60 Hz		

LEDtube Mains T5

Approval Marks	RoHS compliance CE marking KEMA Keur certificate
Energy Consumption kWh/1000 h	26 kWh
Product Data	
Order product name	MAS LEDtube 1200mm HO 26W 865 T5 BR
Full product name	MAS LEDtube 1200mm HO 26W 865 T5 BR
Full product code	871869962297800

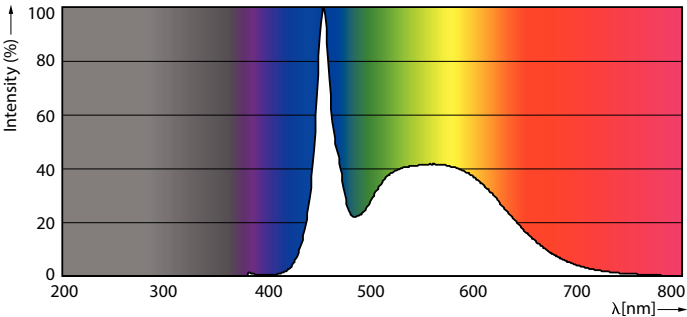
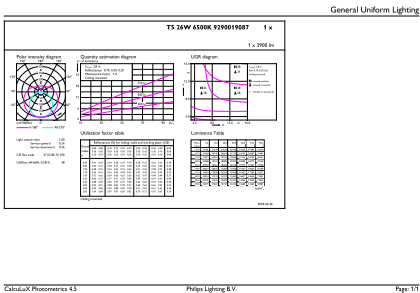
Order code	929001908712
Material Nr. (12NC)	929001908712
Numerator - Quantity Per Pack	1
EAN/UPC - Product/Case	8718699622978
Numerator - Packs per outer box	20
EAN/UPC - Case	8718699622985

Dimensional drawing



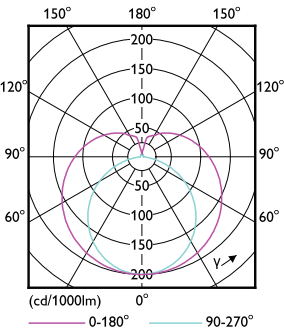
Product	D1	D2	A1	A2	A3
MAS LEDtube 1200mm HO 26W 865 T5 BR	15 mm	16.9 mm	1,149 mm	1,156.1 mm	1,163.2 mm

Photometric data



General uniform lighting - MAS LEDtube 1200mm HO 26W 865 T5 BR

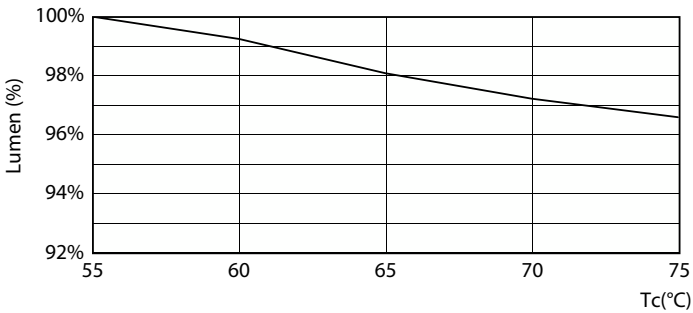
Spectral Power Distribution Colour - MAS LEDtube 1200mm HO 26W 865 T5 BR



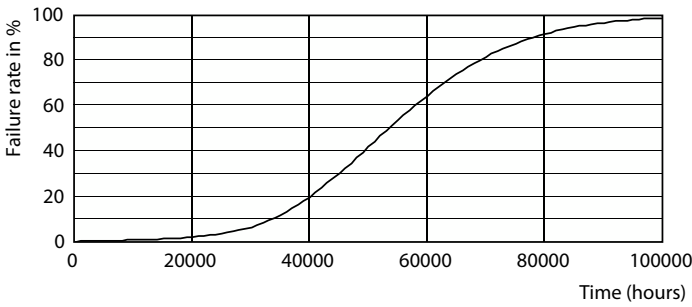
Light Distribution Diagram - MAS LEDtube 1200mm HO 26W 865 T5 BR

LEDtube Mains T5

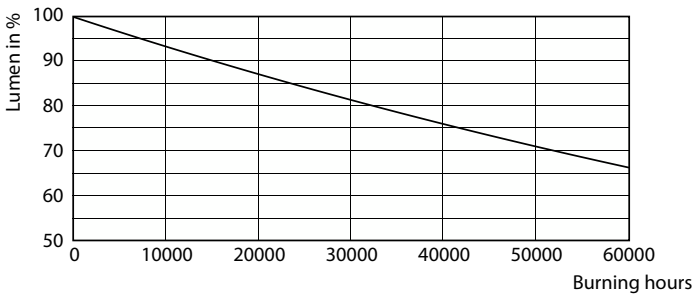
Lifetime



Lumen Maintenance Diagram - MAS LEDtube 1200mm HO 26W 865 T5 BR

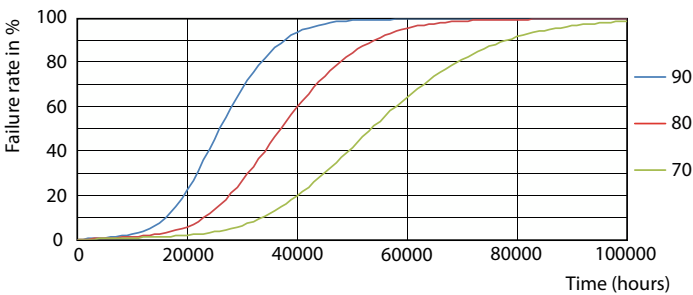


Life Expectancy Diagram - MAS LEDtube 1200mm HO 26W 865 T5 BR



Life Expectancy Diagram - MAS LEDtube 1200mm HO 26W 865 T5 BR

Lumen Maintenance Diagram - MAS LEDtube 1200mm HO 26W 865 T5 BR



Life Expectancy Diagram - MAS LEDtube 1200mm HO 26W 865 T5 BR

LEDtube Mains T5

