



# MASTER LEDtube Mains T5

## MAS LEDtube 1500mm HO 26W 865 T5

The new Philips Master LEDtube Mains T5 brings simplicity to your lighting project. You don't need to pay attention to the driver technology anymore. Thanks to a unique design, Philips MASTER LEDtube Mains T5 installs in luminaires operating on mains power connection. So simple to operate! Perfectly safe, reliable & easy to install, the Philips MASTER LEDtube Mains T5 is the ideal alternative to standard fluorescent tubes to maximise value over lifetime with high energy savings and lower maintenance costs.

### Product data

General Information	
Cap base	G5 [ G5]
RoHS mark	RoHS mark
Nominal lifetime (nom.)	50000 h
Switching cycle	200000X
B50L70	50000 h

Light Technical	
Colour code	865 [ CCT of 6,500 K]
Beam Angle (Nom)	200 °
Luminous flux (nom.)	3900 lm
Luminous flux (rated) (nom.)	3900 lm
Rated beam angle	200 °
Correlated colour temperature (nom.)	6500 K
Colour consistency	<6
Color rendering index (nom.)	80
LLMF at end of nominal lifetime (nom.)	70 %

Operating and Electrical	
Input frequency	50 to 60 Hz
Power (Rated) (Nom)	26 W
Lamp current (nom.)	150 mA
Starting time (nom.)	0.5 s
Warm-up time to 60% light (nom.)	0.5 s
Power factor (nom.)	0.9
Voltage (Nom)	220-240 V

Temperature	
T ambient (max.)	45 °C
T ambient (min.)	-20 °C
T storage (max.)	65 °C
T storage (min.)	-40 °C
T-Case maximum (nom.)	67.4 °C

# MASTER LEDtube Mains T5

## Controls and Dimming

Dimmable	No
----------	----

## Mechanical and Housing

Product length	1500 mm
----------------	---------

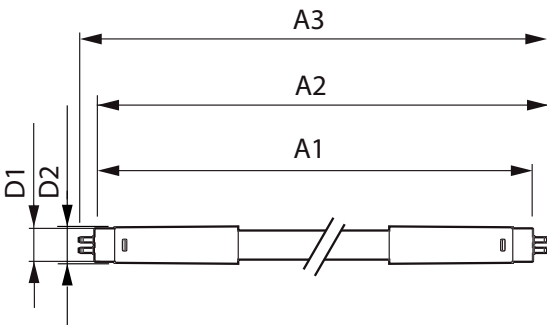
## Approval and Application

Energy efficiency label (EEL)	A++
Energy-saving product	Yes
Approval marks	CE marking RoHS compliance KEMA Keur certificate
Energy Consumption kWh/1000 h	26 kWh

## Product Data

Full product code	871869681933300
Order product name	MAS LEDtube 1500mm HO 26W 865 T5
EAN/UPC – product	8718696819333
Order code	81933300
Numerator – quantity per pack	1
Numerator – packs per outer box	10
Material no. (12NC)	929001909002
Net weight (piece)	0.285 kg

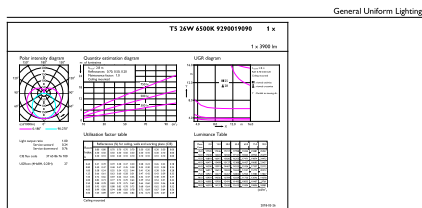
## Dimensional drawing



TLED 1500mm 26W-54W 3900lm 200D 6500K G5

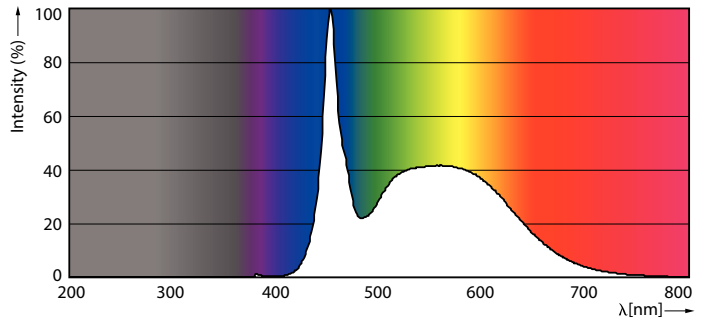
Product	D1	D2	A1	A2	A3
MAS LEDtube 1500mm HO 26W 865 T5	15 mm	16.9 mm	1449 mm	1456.1 mm	1463.2 mm

## Photometric data



© Philips Lighting B.V. Page 1/17

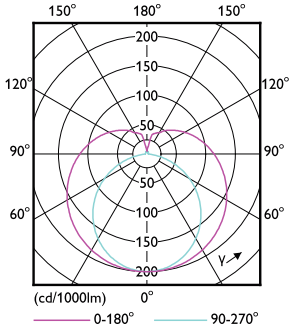
26W G5 865 6500K



26W G5

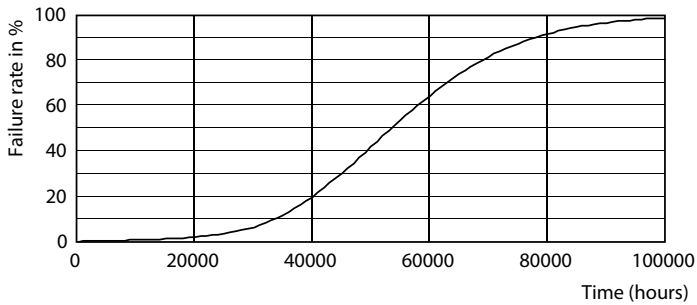
# MASTER LEDtube Mains T5

## Photometric data

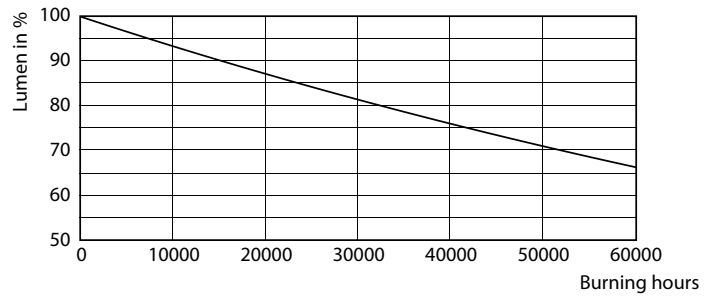


26W G5 830 3000K

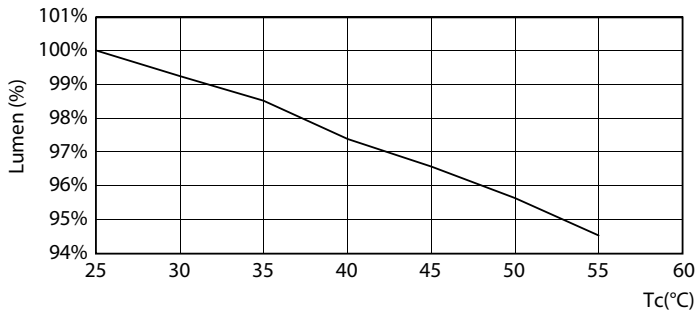
## Lifetime



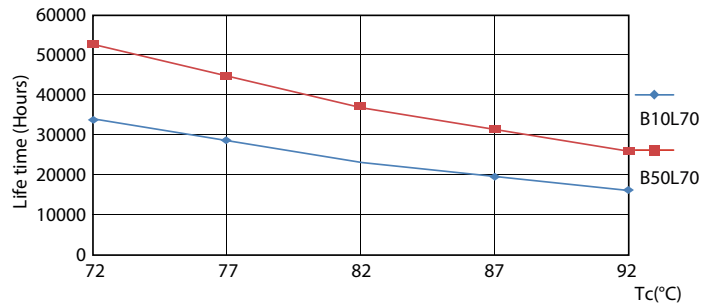
26W G5



26W G5



26W G5



26W G5

# MASTER LEDtube Mains T5

## Lifetime



26W G5

