



MASTER LEDtube Mains T5



MASTER LEDtube 1500mm HO 26W 865 T5

The new Philips Master LEDtube Mains T5 brings simplicity to your lighting project. You don't need to pay attention to the driver technology anymore. Thanks to a unique design, Philips MASTER LEDtube Mains T5 installs in luminaires operating on mains power connection. So simple to operate! . Perfectly safe, reliable & easy to install Philips MASTER LEDtube Mains T5 is the ideal alternative to standard fluorescent tubes to maximize value over lifetime with high energy saving and lower maintenance costs.

Product data

| General Information | |
|----------------------------|----------------|
| Cap-Base | G5 |
| Nominal lifetime | 50,000 hour(s) |
| Switching Cycle | 200,000 |
| Lighting Technology | LED |
| Flux measurement reference | Sphere |
| CE mark | Yes |
| EU RoHS compliant | Yes |

| Light Technical | |
|------------------------------------|--------------------|
| Color Code | 865 [CCT of 6500K] |
| Beam Angle (Nom) | 200 degree(s) |
| Luminous Flux | 3,900 lm |
| Color Designation | Cool Daylight |
| Correlated Color Temperature (Nom) | 6500 K |
| Luminous Efficacy (rated) (Nom) | 150 lm/W |
| Color Consistency | <6 |
| Color rendering index (CRI) | 80 |

| | |
|---|------|
| LLMF At End Of Nominal Lifetime (Nom) | 70 % |
| Flickering value (PstLM) - Flickering value as per EN 61000-3-3 | 1 |
| Stroboscopic effect visibility measure (SVM) | 0.4 |
| Photobiological safety according to EN 62471 | RG0 |

| Operating and Electrical | |
|---|-------------|
| Line Frequency | 50 to 60 Hz |
| Input Frequency | 50 to 60 Hz |
| Power Consumption | 26 W |
| Lamp Current (Nom) | 125 mA |
| Starting Time (Nom) | 0.5 s |
| Warm-up time to 60% light | 0.5 s |
| Power Factor (Fraction) | 0.92 |
| Voltage (Nom) | 220-240 V |
| LED alternative to fluorescent lamp power | 49 W |
| Inrush current at mains | 20 |
| Max. lamp no. on MCB B type 10A - Mains | 31 |

MASTER LEDtube Mains T5

| | |
|---|-------|
| Max. lamp no. on MCB B type 10A – EM ballast without Comp. Cap. | - |
| Max. lamp no. on MCB B type 10A – EM ballast with Comp. Cap. | - |
| Max. lamp no. on MCB B type 16A – Mains | 50 |
| Max. lamp no. on MCB B type 16A – EM ballast without Comp. Cap. | - |
| Max. lamp no. on MCB B type 16A – EM ballast with Comp. Cap. | - |
| Ballast Compatibility | Mains |

Temperature

| | |
|---------------------------|---------------|
| Ambient temperature range | -20 to +45 °C |
| T-Case Maximum (Nom) | 65 °C |

Controls and Dimming

| | |
|----------|----|
| Dimmable | No |
|----------|----|

Mechanical and Housing

| | |
|----------------|----------|
| Bulb Finish | Frosted |
| Bulb Material | Glass |
| Product Length | 1,500 mm |
| Bulb Shape | T5 |

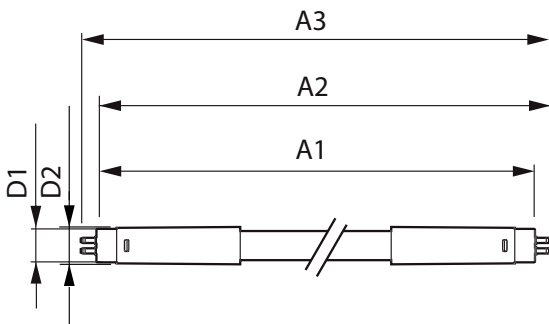
Approval and Application

| | |
|-------------------------------|---|
| Energy Efficiency Class | D |
| Energy Saving Product | Yes |
| Approval Marks | RoHS compliance TUV CE marking KEMA Keur certificate |
| Energy Consumption kWh/1000 h | 26 kWh |
| EPREL Registration Number | 1476413 |

Product Data

| | |
|---------------------------------|-------------------------------------|
| Order product name | MAS LEDtube 1500mm HO 26W 865 T5 |
| Full product name | MASTER LEDtube 1500mm HO 26W 865 T5 |
| Full product code | 871869681933300 |
| Order code | 81933300 |
| Material Nr. (12NC) | 929001909002 |
| Numerator - Quantity Per Pack | 1 |
| EAN/UPC - Product/Case | 8718696819333 |
| Numerator - Packs per outer box | 10 |
| EAN/UPC - Case | 8718696819340 |

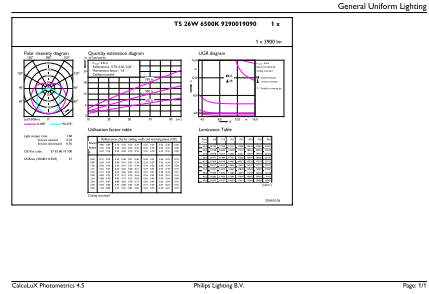
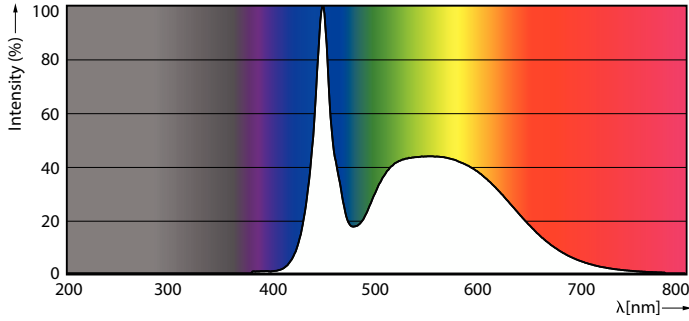
Dimensional drawing



| Product | D1 | D2 | A1 | A2 | A3 |
|----------------------------------|---------|---------|----------|----------|----------|
| MAS LEDtube 1500mm HO 26W 865 T5 | 15.5 mm | 17.1 mm | 1,449 mm | 1,456 mm | 1,463 mm |

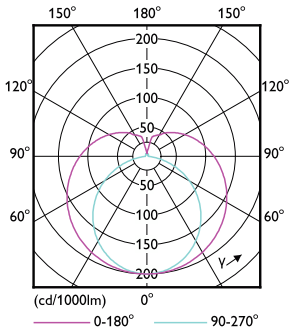
MASTER LEDtube Mains T5

Photometric data



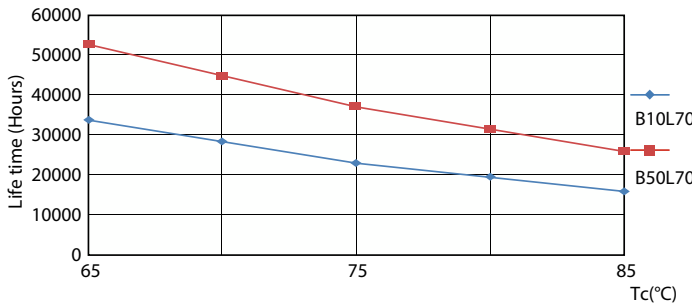
Spectral Power Distribution Colour - MAS LEDtube 1500mm HO 26W 865 T5

General uniform lighting - MAS LEDtube 1500mm HO 26W 865 T5

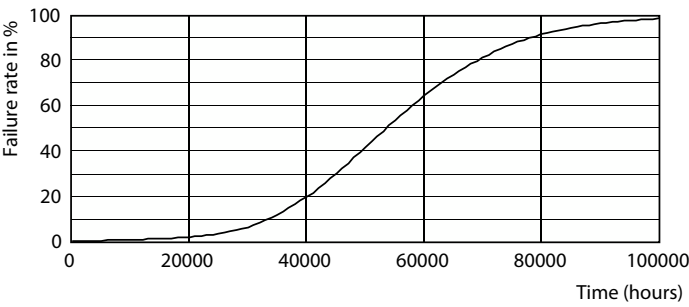


Light Distribution Diagram - MAS LEDtube 1500mm HO 26W 865 T5

Lifetime



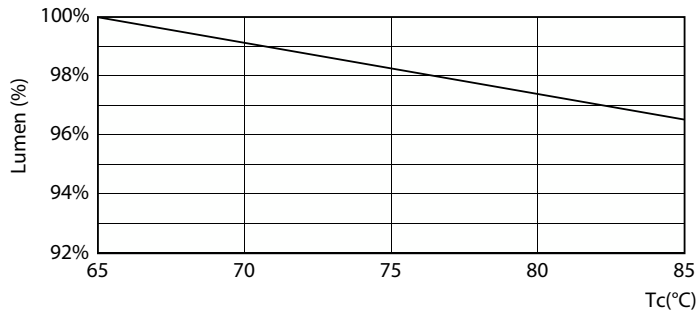
Life Expectancy Diagram - MAS LEDtube 1500mm HO 26W 865 T5



Life Expectancy Diagram - MAS LEDtube 1500mm HO 26W 865 T5

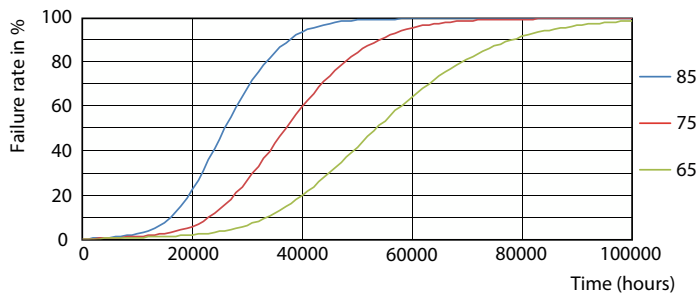
MASTER LEDtube Mains T5

Lifetime



Lumen Maintenance Diagram - MAS LEDtube 1500mm HO 26W 865 T5

Lumen Maintenance Diagram - MAS LEDtube 1500mm HO 26W 865 T5



Life Expectancy Diagram - MAS LEDtube 1500mm HO 26W 865 T5

