



CorePro LED PLL



CorePro LED PLL HF 24W 830 4P 2G11

Philips CorePro LED PLL is the ideal uplamping solution for downlights & luminaires in a wide range of general lighting applications. It integrates a LED light source into a traditional fluorescent form factor to offer superb energy savings over a lifetime that's twice as long as fluorescent alternatives.

Product data

General Information	
Cap-Base	2G11
Nominal lifetime	30,000 hour(s)
Switching Cycle	50,000
Lighting Technology	LED
Flux measurement reference	Sphere
CE mark	Yes
EU RoHS compliant	Yes
Light Technical	
Color Code	830 [CCT of 3000K]
Beam Angle (Nom)	160 degree(s)
Luminous Flux	3,200 lm
Color Designation	White (WH)
Correlated Color Temperature (Nom)	3000 K
Luminous Efficacy (rated) (Nom)	133.00 lm/W
Color Consistency	<6
Color rendering index (CRI)	83
LLMF At End Of Nominal Lifetime (Nom)	70 %
Photobiological safety according to EN 62471	RG0
Operating and Electrical	
Line Frequency	20000-70000 Hz

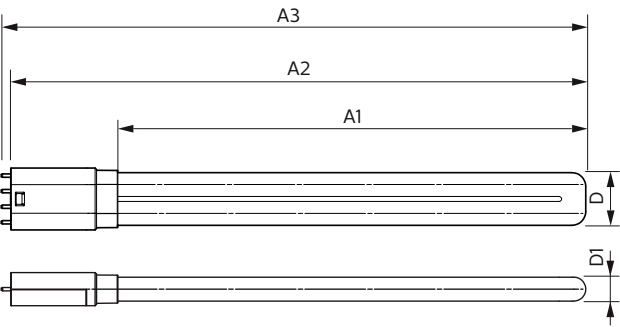
Input Frequency	20000-70000 Hz
Power Consumption	24 W
Lamp Current (Max)	600 mA
Lamp Current (Min)	400 mA
Starting Time (Nom)	0.5 s
Warm-up time to 60% light	0.5 s
Power Factor (Fraction)	0.9
Voltage (Nom)	53-77 V
LED alternative to fluorescent lamp power	55 W
Inrush current at mains	-
Max. lamp no. on MCB B type 10A - Mains	-
Max. lamp no. on MCB B type 10A - EM ballast without Comp. Cap.	-
Max. lamp no. on MCB B type 10A - EM ballast with Comp. Cap.	-
Max. lamp no. on MCB B type 16A - Mains	-
Max. lamp no. on MCB B type 16A - EM ballast without Comp. Cap.	-
Max. lamp no. on MCB B type 16A - EM ballast with Comp. Cap.	-
Ballast Compatibility	HF

CorePro LED PLL

Temperature	
Ambient temperature range	-20 °C to 45 °C
T-Case Maximum (Nom)	70 °C
Controls and Dimming	
Dimmable	No
Mechanical and Housing	
Product Length	540 mm
Bulb Shape	PL-L
Approval and Application	
Energy Efficiency Class	E
Energy Saving Product	Yes
Approval Marks	TUV CE marking RoHS compliance KEMA Keur certificate
Energy Consumption kWh/1000 h	24 kWh

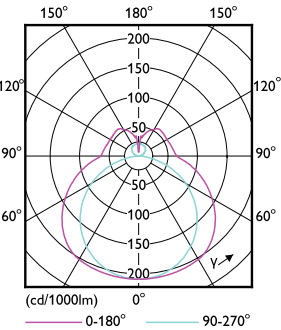
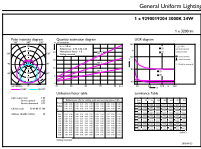
EPREL Registration Number	387355
Product Data	
Order product name	CorePro LED PLL HF 24W 830 4P 2G11
Full product name	CorePro LED PLL HF 24W 830 4P 2G11
Full product code	871869682839700
Order code	929001920402
Material Nr. (12NC)	929001920402
Numerator - Quantity Per Pack	1
EAN/UPC - Product/Case	8718696828397
Numerator - Packs per outer box	10
EAN/UPC - Case	8718696828403

Dimensional drawing



Product	D	D1	A1	A2	A3
CorePro LED PLL HF 24W 830 4P 2G11	37.6 mm	17 mm	453 mm	528.5 mm	535.1 mm

Photometric data

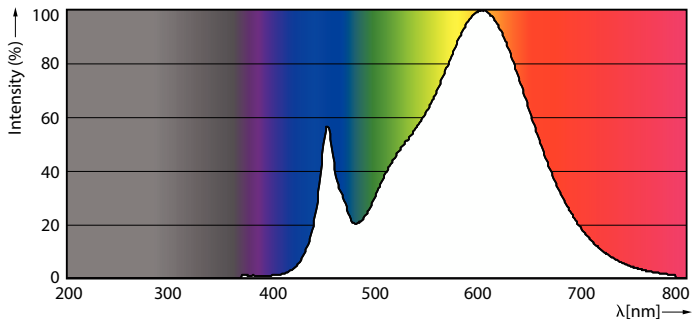


General uniform lighting - CorePro LED PLL HF 24W 830 4P 2G11

Light Distribution Diagram - CorePro LED PLL HF 24W 830 4P 2G11

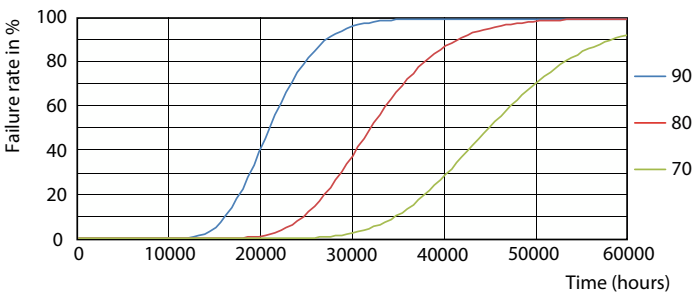
CorePro LED PLL

Photometric data

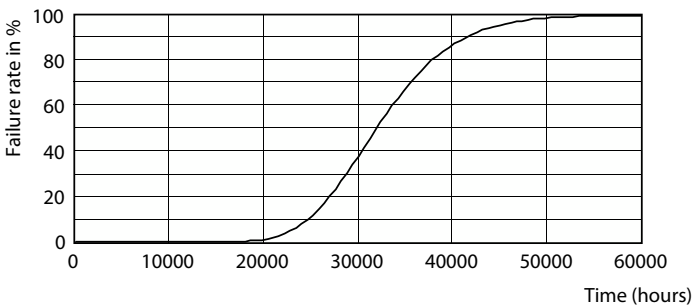


Spectral Power Distribution Colour - CorePro LED PLL HF 24W 830 4P 2G11

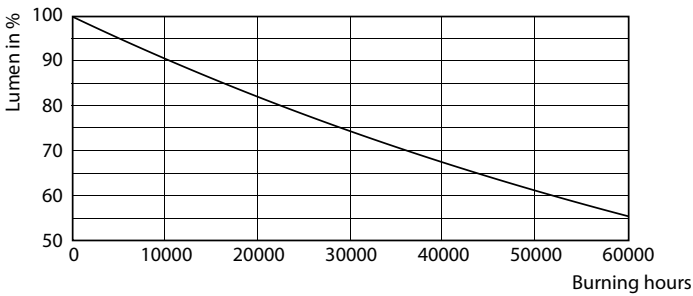
Lifetime



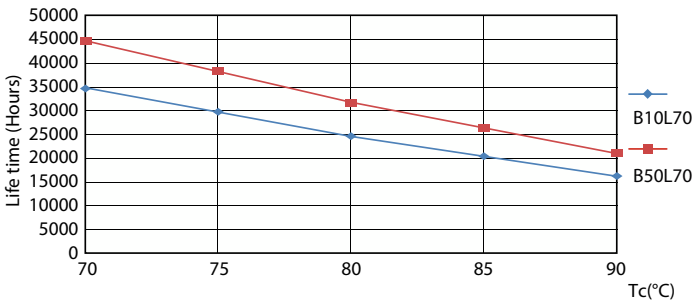
Life Expectancy Diagram - CorePro LED PLL HF 24W 830 4P 2G11



Life Expectancy Diagram - CorePro LED PLL HF 24W 830 4P 2G11



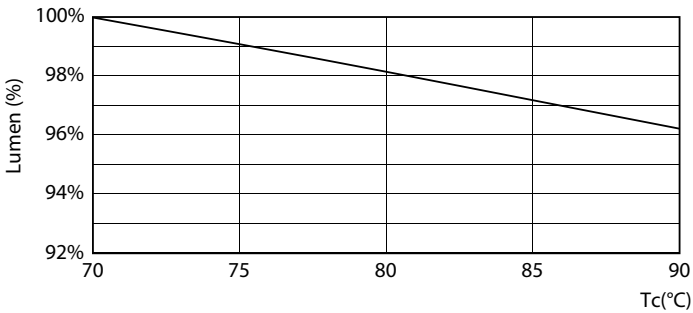
Lumen Maintenance Diagram - CorePro LED PLL HF 24W 830 4P 2G11



Life Expectancy Diagram - CorePro LED PLL HF 24W 830 4P 2G11

CorePro LED PLL

Lifetime



Lumen Maintenance Diagram - CorePro LED PLL HF 24W 830 4P 2G11

