



MASTER LEDtube EM/ Mains

MAS LEDtube 1200mm HO 12.5W 830 T8

The Philips MASTER LEDtube integrates a LED light source into a traditional fluorescent form factor. Its unique design creates a perfectly uniform visual appearance which cannot be distinguished from traditional fluorescent. This product is the ideal solution for up lighting in general lighting applications.

Product data

General Information

Cap base	G13 [Medium Bi-Pin Fluorescent]
RoHS mark	RoHS mark
Nominal lifetime (nom.)	50000 h
Switching cycle	200000X
B50L70	50000 h

Light Technical

Colour code	830 [CCT of 3,000 K]
Beam Angle (Nom)	160 °
Luminous flux (nom.)	2000 lm
Luminous flux (rated) (nom.)	2000 lm
Rated beam angle	160 °
Correlated colour temperature (nom.)	3000 K
Colour consistency	<6
Color rendering index (nom.)	83
LLMF at end of nominal lifetime (nom.)	70 %

Operating and Electrical

Input frequency	50 to 60 Hz
-----------------	-------------

Power (Rated) (Nom)	12.5 W
Lamp current (max.)	59 mA
Lamp current (min.)	54 mA
Starting time (nom.)	0.5 s
Warm-up time to 60% light (nom.)	0.5 s
Power factor (nom.)	0.9
Voltage (Nom)	220-240 V

Temperature

T ambient (max.)	45 °C
T ambient (min.)	-20 °C
T storage (max.)	65 °C
T storage (min.)	-40 °C
T-Case maximum (nom.)	50 °C

Controls and Dimming

Dimmable	No
----------	----

MASTER LEDtube EM/Mains

Mechanical and Housing

Product length 1200 mm

Approval and Application

Energy efficiency label (EEL) A++
 Energy-saving product Yes
 Approval marks RoHS compliance CE marking KEMA Keur certificate
 Energy Consumption kWh/1000 h 13 kWh

Product Data

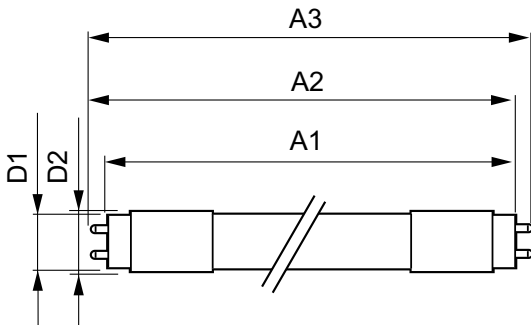
Full product code 871869959235600

Order product name MAS LEDtube 1200mm HO 12.5W 830 T8
 EAN/UPC – product 8718699592356
 Order code 59235600
 Numerator – quantity per pack 1
 Numerator – packs per outer box 10
 Material no. (12NC) 929001922602
 Net weight (piece) 0.250 kg

Warnings and Safety

• -

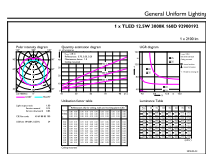
Dimensional drawing



TLED master HE 2000lm12.35w 4ft 3000k

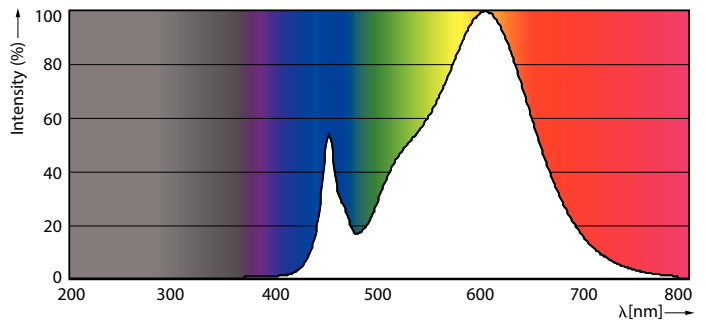
Product	D1	D2	A1	A2	A3
MAS LEDtube 1200mm HO 12.5W 830 T8	25.8 mm	28 mm	1198.2 mm	1205.3 mm	1212.4 mm

Photometric data



General Uniform Lighting
 1 x T8 LED 1200mm HO 12.5W 830 T8
 12.5W 830 T8

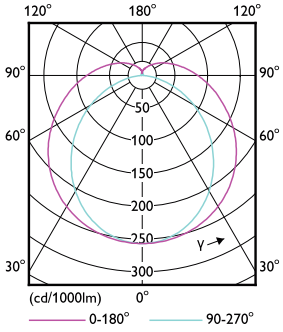
LEDtube MAS HO 12.5W G13 830 16D ND



LEDtube MAS HO 12.5W G13 830 16D ND

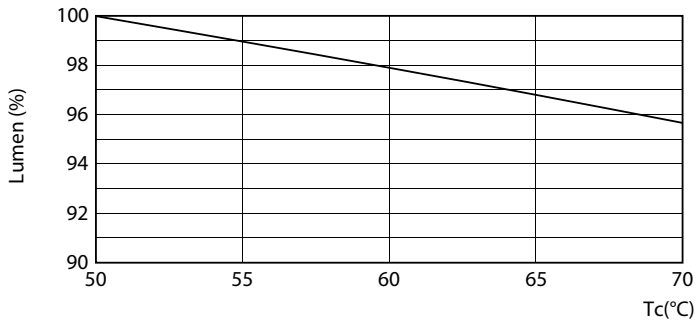
MASTER LEDtube EM/Mains

Photometric data

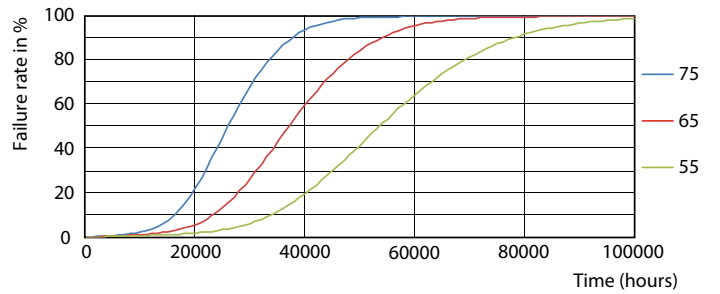


LEDtube MAS HO 12.5W G13 830 16D ND

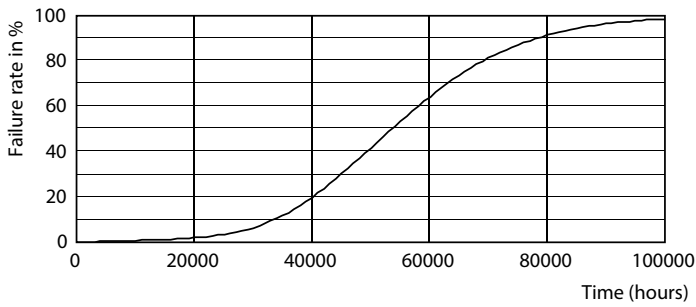
Lifetime



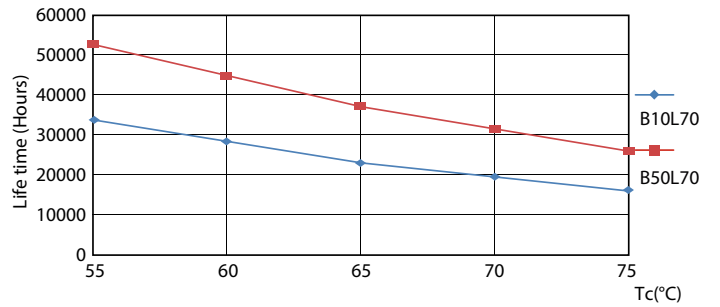
LEDtube MAS HO 12.5W G13 830 16D ND



LEDtube MAS HO 12.5W G13 830 16D ND



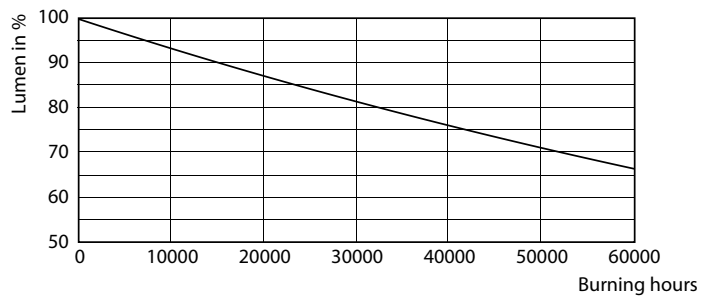
LEDtube MAS HO 12.5W G13 830 16D ND



LEDtube MAS HO 12.5W G13 830 16D ND

MASTER LEDtube EM/Mains

Lifetime



LEDtube MAS HO 12.5W G13 830 16D ND

