

MASTER LEDtube EM/ Mains

MAS LEDtube 1200mm HO 12.5W 840 T8

The Philips MASTER LEDtube integrates a LED light source into a traditional fluorescent form factor. Its unique design creates a perfectly uniform visual appearance which cannot be distinguished from traditional fluorescent. For those that are looking for value for money within limited budget and re-lamping efforts for better light effect and lifetime.

Product data

General Information	
Cap base	G13 [Medium Bi-Pin Fluorescent]
RoHS mark	RoHS mark
Nominal lifetime (nom.)	50000 h
Switching cycle	200000X
B50L70	50000 h

Light Technical	
Colour code	841 [CCT of 4100K (841)]
Beam Angle (Nom)	160 °
Luminous flux (nom.)	2100 lm
Luminous flux (rated) (nom.)	2100 lm
Rated beam angle	160 °
Correlated colour temperature (nom.)	4000 K
Colour consistency	<6
Color rendering index (nom.)	83
LLMF at end of nominal lifetime (nom.)	70 %

Operating and Electrical	
Input frequency	50 to 60 Hz

Power (Rated) (Nom)	12.5 W
Lamp current (max.)	59 mA
Lamp current (min.)	54 mA
Starting time (nom.)	0.5 s
Warm-up time to 60% light (nom.)	0.5 s
Power factor (nom.)	0.9
Voltage (Nom)	220-240 V

Temperature	
T ambient (max.)	45 °C
T ambient (min.)	-20 °C
T storage (max.)	65 °C
T storage (min.)	-40 °C
T-Case maximum (nom.)	50 °C

Controls and Dimming	
Dimmable	No

MASTER LEDtube EM/Mains

Mechanical and Housing

Product length 1200 mm

Approval and Application

Energy efficiency label (EEL) A++
 Energy-saving product Yes
 Approval marks RoHS compliance CE marking KEMA Keur certificate
 Energy Consumption kWh/1000 h 13 kWh

Product Data

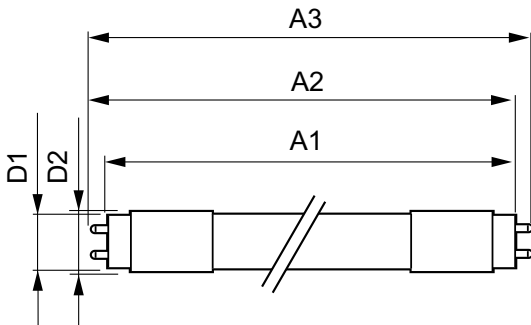
Full product code 871869959237000

Order product name MAS LEDtube 1200mm HO 12.5W 840 T8
 EAN/UPC – product 8718699592370
 Order code 59237000
 Numerator – quantity per pack 1
 Numerator – packs per outer box 10
 Material no. (12NC) 929001922702
 Net weight (piece) 0.250 kg

Warnings and Safety

• -

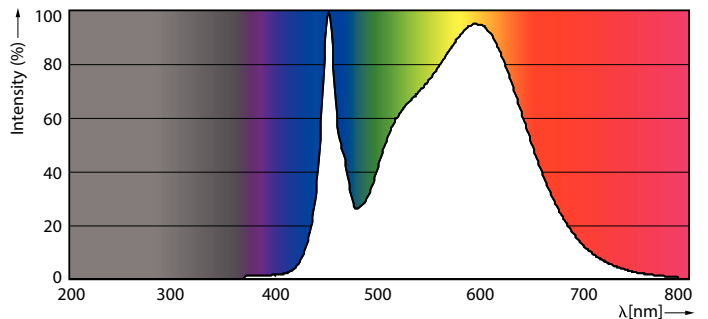
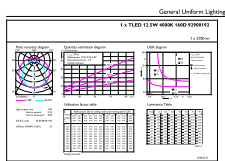
Dimensional drawing



TLED master HE 2100lm 12.35w 4ft 4000k

Product	D1	D2	A1	A2	A3
MAS LEDtube 1200mm HO 12.5W 840 T8	25.8 mm	28 mm	1198.2 mm	1205.3 mm	1212.4 mm

Photometric data

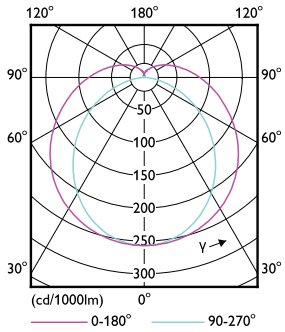


LEDtube MAS HO 12.5W G13 840 16D ND

LEDtube MAS HO G13

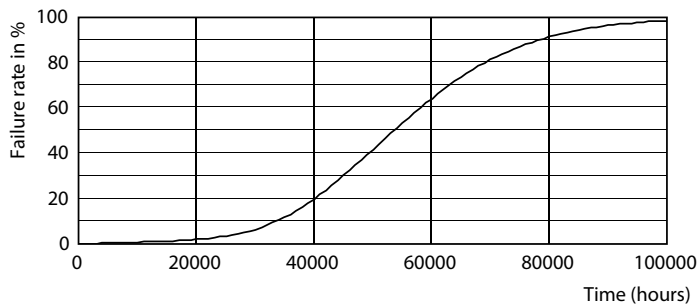
MASTER LEDtube EM/Mains

Photometric data

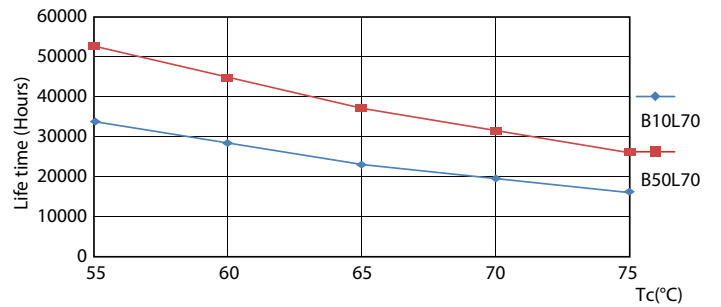


LEDtube T8 MAS HO G13

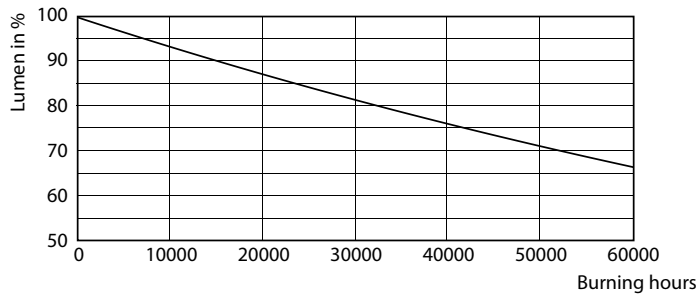
Lifetime



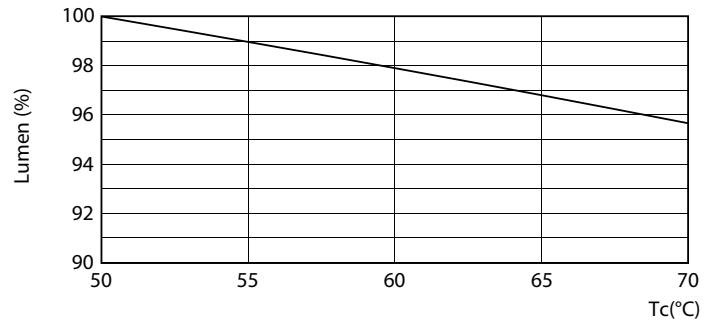
LEDtube T8 MAS HO G13



LEDtube T8 MAS HO G13



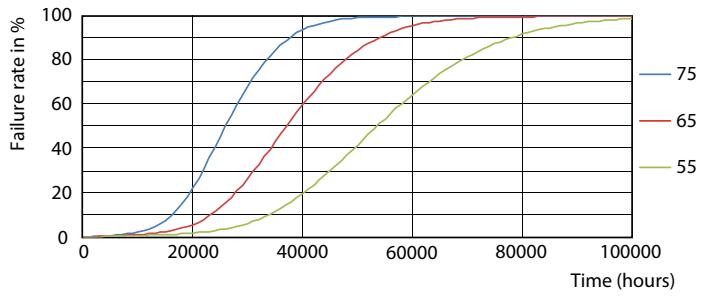
LEDtube T8 MAS HO G13



LEDtube T8 MAS HO 12.5W G13

MASTER LEDtube EM/Mains

Lifetime



LEDtube T8 MAS HO G13

