



MASTER LEDtube EM/ Mains

MAS LEDtube 1200mm HO 12.5W 865 T8

The Philips MASTER LEDtube integrates a LED light source into a traditional fluorescent form factor. Its unique design creates a perfectly uniform visual appearance which cannot be distinguished from traditional fluorescent. This product is the ideal solution for up lighting in general lighting applications.

Product data

General Information	
Cap base	G13 [Medium Bi-Pin Fluorescent]
RoHS mark	RoHS mark
Nominal lifetime (nom.)	60000 h
Switching cycle	200000X
B50L70	60000 h

Light Technical	
Colour Code	865 [CCT of 6,500 K]
Technical Beam Angle (Nom)	160 °
Lamp Luminous Flux 25°C EL (Nom)	2100 lm
Lamp Luminous Flux (Nom)	2100 lm
Rated beam angle	160 °
Colour Temperature, horizontal (Nom)	6500 K
Colour consistency	<6
Colour Rendering Index,horiz (Nom)	83
LLMF at end of nominal lifetime (nom.)	70 %

Operating and Electrical	
Input frequency	50 to 60 Hz

Power (Rated) (Nom)	12.5 W
Lamp current (max.)	59 mA
Lamp current (min.)	54 mA
Starting time (nom.)	0.5 s
Warm-up time to 60% light (nom.)	0.5 s
Power factor (nom.)	0.9
Voltage (Nom)	220-240 V

Temperature	
T ambient (max.)	45 °C
T ambient (min.)	-20 °C
T storage (max.)	65 °C
T storage (min.)	-40 °C
T-Case maximum (nom.)	50 °C

Controls and Dimming	
Dimmable	No

MASTER LEDtube EM/Mains

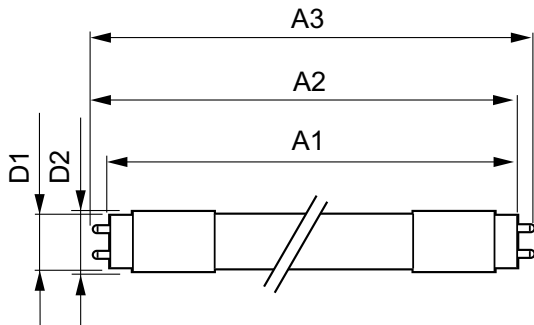
Mechanical and Housing	
Product length	1200 mm
Approval and Application	
Energy efficiency label (EEL)	A++
Energy-saving product	Yes
Approval marks	RoHS compliance CE marking KEMA Keur certificate
Energy Consumption kWh/1000 h	13 kWh
Product Data	
Full product code	871869959239400

Order product name	MAS LEDtube 1200mm HO 12.5W 865 T8
EAN/UPC – product	8718699592394
Order code	929001922802
Numerator – quantity per pack	1
Numerator – packs per outer box	10
Material no. (12NC)	929001922802
Net weight (piece)	0.250 kg

Warnings and Safety

• -

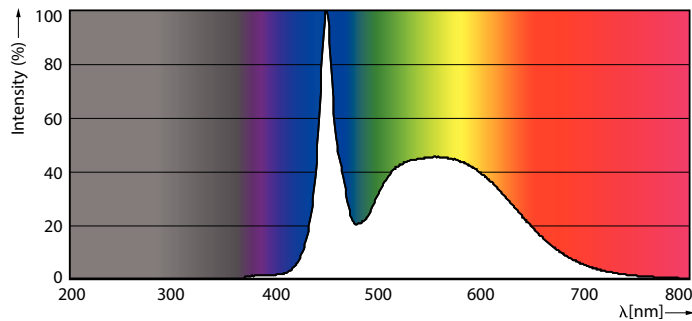
Dimensional drawing



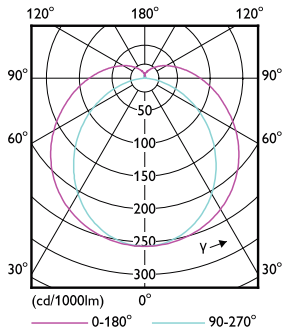
TLED master HE 2100lm 12.35w 4ft 6500k

Product	D1	D2	A1	A2	A3
MAS LEDtube 1200mm HO 12.5W 865 T8	25.8 mm	28 mm	1198.2 mm	1205.3 mm	1212.4 mm

Photometric data



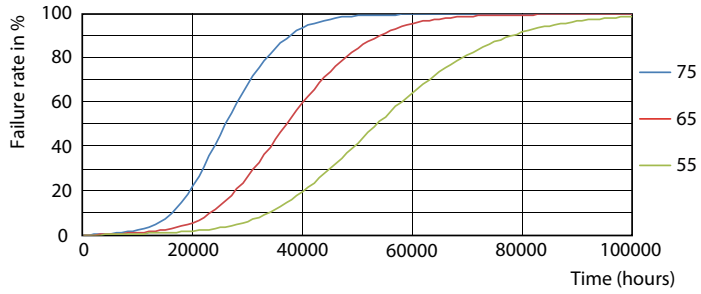
LEDtube T8 MAS HO G13 865



LEDtube T8 MAS HO G13

MASTER LEDtube EM/Mains

Lifetime



LEDtube T8 MAS HO G13

