

MASTER LEDtube EM/ Mains

MAS LEDtube 1200mm HO 12.5W 865 T8

The Philips MASTER LEDtube integrates a LED light source into a traditional fluorescent form factor. Its unique design creates a perfectly uniform visual appearance which cannot be distinguished from traditional fluorescent. This product is the ideal solution for up lighting in general lighting applications.

Product data

General Information		Power (Rated) (Nom)	
Cap base	G13 [Medium Bi-Pin Fluorescent]		12.5 W
RoHS mark	RoHS mark	Lamp current (max.)	59 mA
Nominal lifetime (nom.)	60000 h	Lamp current (min.)	54 mA
Switching cycle	200000X	Starting time (nom.)	0.5 s
B50L70	60000 h	Warm-up time to 60% light (nom.)	0.5 s
Light Technical		Power factor (nom.)	0.9
Colour Code	865 [CCT of 6,500 K]	Voltage (Nom)	220-240 V
Beam Angle (Nom)	160 °	Temperature	
Lamp Luminous Flux 25°C EL (Nom)	2100 lm	T ambient (max.)	45 °C
Lamp Luminous Flux (Nom)	2100 lm	T ambient (min.)	-20 °C
Rated beam angle	160 °	T storage (max.)	65 °C
Colour Temperature, horizontal (Nom)	6500 K	T storage (min.)	-40 °C
Colour consistency	<6	T-Case maximum (nom.)	50 °C
Colour Rendering Index,horiz (Nom)	83	Controls and Dimming	
LLMF at end of nominal lifetime (nom.)	70 %	Dimmable	No
Operating and Electrical			
Input frequency	50 to 60 Hz		

MASTER LEDtube EM/Mains

Mechanical and Housing

Product length 1200 mm

Approval and Application

Energy efficiency label (EEL) A++
 Energy-saving product Yes
 Approval marks RoHS compliance CE marking KEMA Keur certificate
 Energy Consumption kWh/1000 h 13 kWh

Product Data

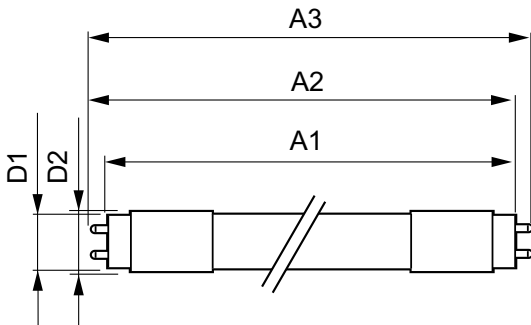
Full product code 871869959239400

Order product name	MAS LEDtube 1200mm HO 12.5W 865 T8
EAN/UPC – product	8718699592394
Order code	929001922802
Numerator – quantity per pack	1
Numerator – packs per outer box	10
Material no. (12NC)	929001922802
Net weight (piece)	0.250 kg

Warnings and Safety

• -

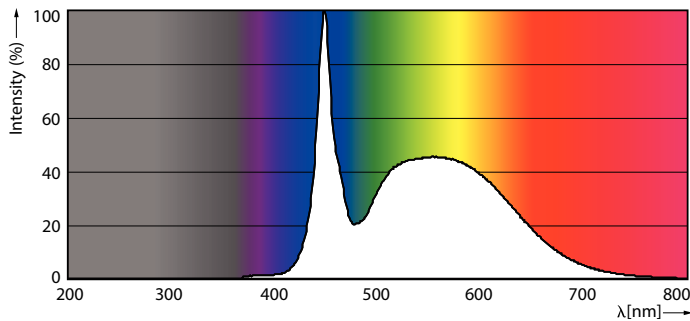
Dimensional drawing



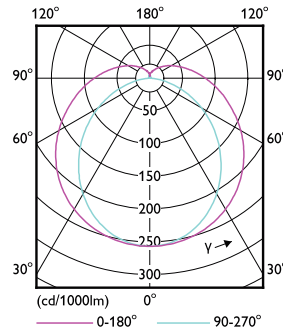
TLED master HE 2100lm 12.35w 4ft 6500k

Product	D1	D2	A1	A2	A3
MAS LEDtube 1200mm HO 12.5W 865 T8	25.8 mm	28 mm	1198.2 mm	1205.3 mm	1212.4 mm

Photometric data



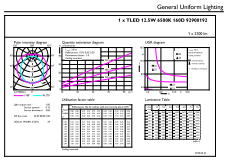
LEDtube T8 MAS HO G13 865



LEDtube T8 MAS HO G13

MASTER LEDtube EM/Mains

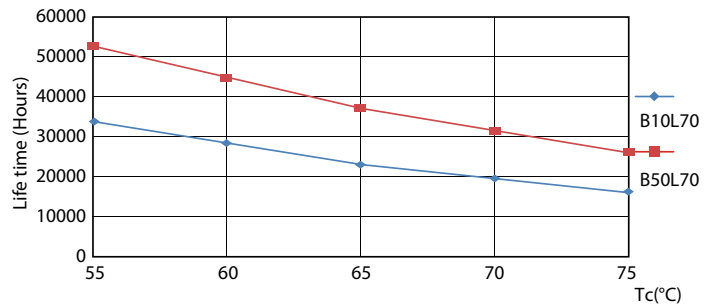
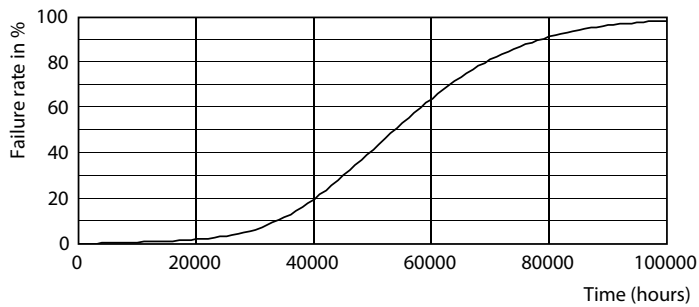
Photometric data



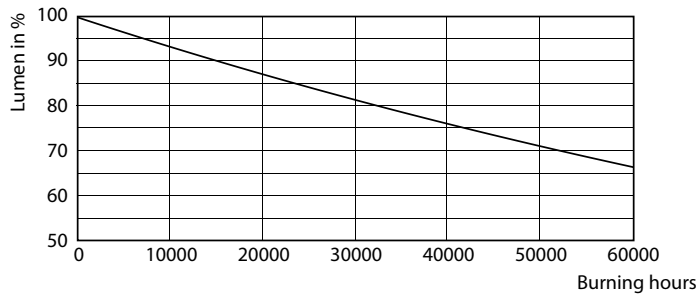
OSRAM Photometric Data Page Lighting Data Page 11

LEDtube MAS HO 12.5W G13 865 16D ND

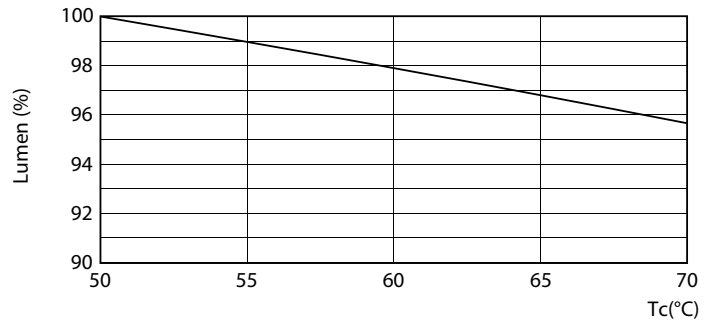
Lifetime



LEDtube T8 MAS HO G13



LEDtube T8 MAS HO G13

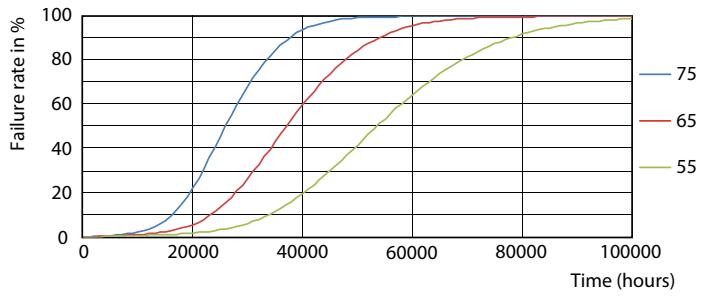


LEDtube T8 MAS HO G13

LEDtube T8 MAS HO 12.5W G13

MASTER LEDtube EM/Mains

Lifetime



LEDtube T8 MAS HO G13

