



MASTER LEDtube EM/ Mains



MASTER LEDtube 1500mm HO 18.2W 830 T8

The Philips MASTER LEDtube integrates a LED light source into a traditional fluorescent form factor. Its unique design creates a perfectly uniform visual appearance which cannot be distinguished from traditional fluorescent. This product is the ideal solution for up lighting in general lighting applications.

Warnings and Safety

• -

Product data

| General Information | |
|----------------------------|----------|
| Cap base | G13 ROT |
| Nominal lifetime | 75,000 h |
| Switching Cycle | 200,000 |
| Lighting Technology | LED |
| Flux measurement reference | Sphere |
| CE mark | Yes |
| EU RoHS compliant | Yes |

| Light Technical | |
|----------------------------------|--------------------|
| Colour Code | 830 [CCT of 3000K] |
| Beam angle (nom.) | 160 degree(s) |
| Luminous Flux | 2,900 lm |
| Colour designation | White (WH) |
| Correlated Colour Temperature | 3000 K |
| Luminous efficacy (rated) (nom.) | 159 lm/W |
| Colour consistency | <6 |
| Colour rendering index (CRI) | 80 |

| | |
|--|------|
| LLMF at end of nominal lifetime (nom.) | 70 % |
| Flickering value (PstLM) | 0.5 |
| Stroboscopic effect | 0.2 |
| Photobiological safety according to EN 62471 | RG0 |

| Operating and Electrical | |
|---|-------------|
| Line Frequency | 50 to 60 Hz |
| Input frequency | 50 to 60 Hz |
| Power Consumption | 18.2 W |
| Lamp current (max.) | 93 mA |
| Lamp current (min.) | 77 mA |
| Starting time (nom.) | 0.5 s |
| Warm-up time to 60% light | 0.5 s |
| Power Factor (Fraction) | 0.9 |
| Voltage (nom.) | 220-240 V |
| LED alternative to fluorescent lamp power | 58 W |
| Inrush current at mains | 8.4 |
| Max. lamp no. on MCB B type 10A — Mains | 80 |

MASTER LEDtube EM/Mains

| | |
|---|----------|
| Max. lamp no. on MCB B type 10A — EM ballast without Comp. Cap. | 80 |
| Max. lamp no. on MCB B type 10A — EM ballast with Comp. Cap. | 10 |
| Max. lamp no. on MCB B type 16A — Mains | 130 |
| Max. lamp no. on MCB B type 16A — EM ballast without Comp. Cap. | 135 |
| Max. lamp no. on MCB B type 16A — EM ballast with Comp. Cap. | 16 |
| Ballast Compatibility | EM/Mains |

Temperature

| | |
|---------------------------|---------------|
| Ambient temperature range | -20°C to 45°C |
| T-Case maximum (nom.) | 55 °C |

Controls and Dimming

| | |
|----------|----|
| Dimmable | No |
|----------|----|

Mechanical and Housing

| | |
|----------------|----------|
| Lamp Finish | Frosted |
| Bulb material | Plastic |
| Product length | 1,500 mm |
| Bulb shape | T8 |

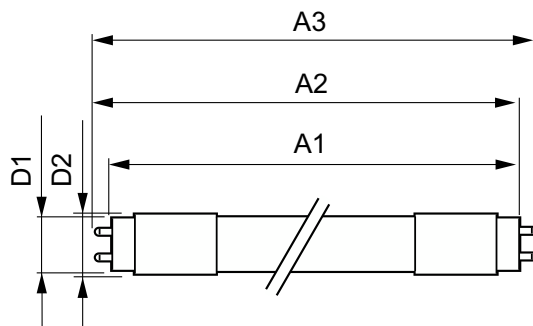
Approval and Application

| | |
|------------------------------------|---|
| Energy Efficiency Class | D |
| Energy-saving product | Yes |
| Approval marks | RoHS compliance TUV CE marking KEMA Keur certificate |
| Energy consumption kWh/1,000 hours | 19 kWh |
| EPREL registration number | 1206969 |

Product Data

| | |
|-----------------------------------|---------------------------------------|
| Order product name | MAS LEDtube 1500mm HO 18.2W 830 T8 |
| Full product name | MASTER LEDtube 1500mm HO 18.2W 830 T8 |
| Full EOC | 871869959241700 |
| Order code | 59241700 |
| Material no. (12 NC) | 929001922902 |
| SAP numerator – quantity per pack | 1 |
| EAN/UPC – Product/Case | 8718699592417 |
| Numerator – packs per outer box | 10 |
| EAN/UPC - Case | 8718699592424 |

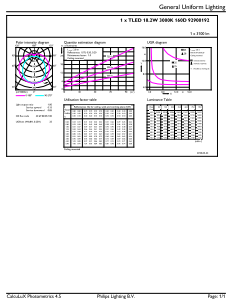
Dimensional drawing



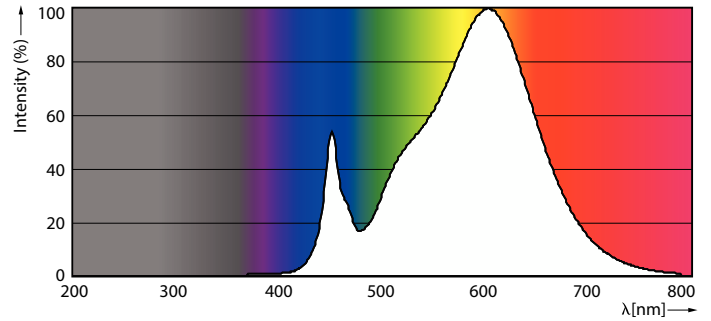
| Product | D1 | D2 | A1 | A2 | A3 |
|------------------------------------|---------|-------|------------|------------|----------|
| MAS LEDtube 1500mm HO 18.2W 830 T8 | 25.8 mm | 28 mm | 1,498.8 mm | 1,505.9 mm | 1,513 mm |

MASTER LEDtube EM/Mains

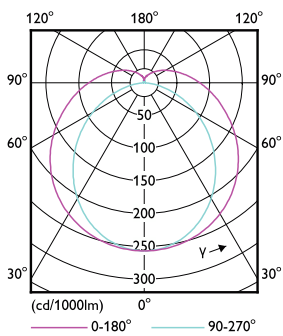
Photometric data



General uniform lighting - MAS LEDtube 1500mm HO 18.2W 830 T8

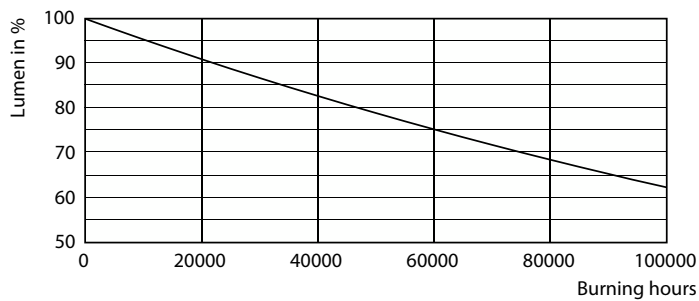


Spectral Power Distribution Colour - MAS LEDtube 1500mm HO 18.2W 830 T8

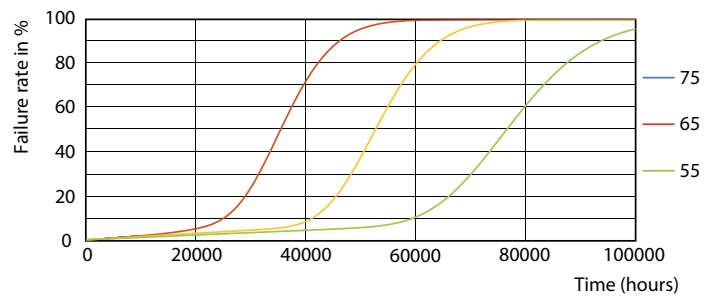


Light Distribution Diagram - MAS LEDtube 1500mm HO 18.2W 830 T8

Lifetime



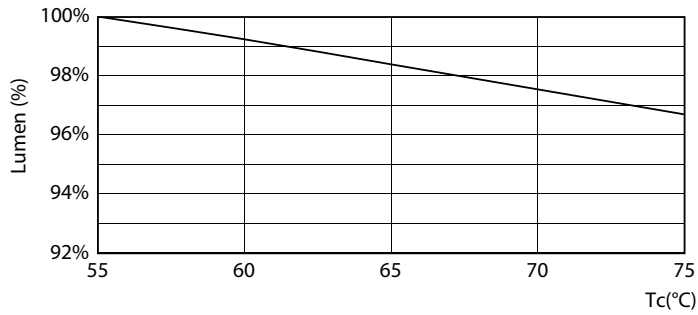
Lumen Maintenance Diagram - MAS LEDtube 1500mm HO 18.2W 830 T8



Life Expectancy Diagram - MAS LEDtube 1500mm HO 18.2W 830 T8

MASTER LEDtube EM/Mains

Lifetime



Lumen Maintenance Diagram - MAS LEDtube 1500mm HO 18.2W 830 T8

Life Expectancy Diagram - MAS LEDtube 1500mm HO 18.2W 830 T8



Life Expectancy Diagram - MAS LEDtube 1500mm HO 18.2W 830 T8

