

MASTER LEDtube EM/ Mains T8



MASTER LEDtube 1500mm HO 18.2W 840 T8

The Philips MASTER LEDtube integrates a LED light source into a traditional fluorescent form factor. Its unique design creates a perfectly uniform visual appearance which cannot be distinguished from traditional fluorescent. For those that are looking for value for money within limited budget and re-lamping efforts for better light effect and lifetime.

Warnings and Safety

• -

Product data

General Information		Color rendering index (CRI)	
Cap-Base	G13 ROT		80
Nominal lifetime	75,000 hour(s)	LLMF At End Of Nominal Lifetime (Nom)	70 %
Switching Cycle	200,000	Flickering value (PstLM) - Flickering value as per EN 61000-3-3	0.5
Lighting Technology	LED	Stroboscopic effect visibility measure (SVM)	0.2
Flux measurement reference	Sphere	Photobiological safety according to EN 62471	RG0
CE mark	Yes		
EU RoHS compliant	Yes		
Light Technical		Operating and Electrical	
Color Code	840 [CCT of 4000K]	Line Frequency	50 to 60 Hz
Beam Angle (Nom)	160 degree(s)	Input Frequency	50 to 60 Hz
Luminous Flux	3,100 lm	Power Consumption	18.2 W
Color Designation	Cool White (CW)	Lamp Current (Max)	93 mA
Correlated Color Temperature (Nom)	4000 K	Lamp Current (Min)	77 mA
Luminous Efficacy (rated) (Nom)	170 lm/W	Starting Time (Nom)	0.5 s
Color Consistency	<6	Warm-up time to 60% light	0.5 s
		Power Factor (Fraction)	0.9
		Voltage (Nom)	220-240 V

MASTER LEDtube EM/Mains T8

LED alternative to fluorescent lamp power	58 W
Inrush current at mains	8.4
Max. lamp no. on MCB B type 10A – Mains	80
Max. lamp no. on MCB B type 10A – EM ballast without Comp. Cap.	80
Max. lamp no. on MCB B type 10A – EM ballast with Comp. Cap.	10
Max. lamp no. on MCB B type 16A – Mains	130
Max. lamp no. on MCB B type 16A – EM ballast without Comp. Cap.	135
Max. lamp no. on MCB B type 16A – EM ballast with Comp. Cap.	16
Ballast Compatibility	EM/Mains

Temperature

Ambient temperature range	-20 °C to 45 °C
T-Case Maximum (Nom)	55 °C

Controls and Dimming

Dimmable	No
----------	----

Mechanical and Housing

Bulb Finish	Frosted
Bulb Material	Plastic
Product Length	1,500 mm

Bulb Shape	T8
------------	----

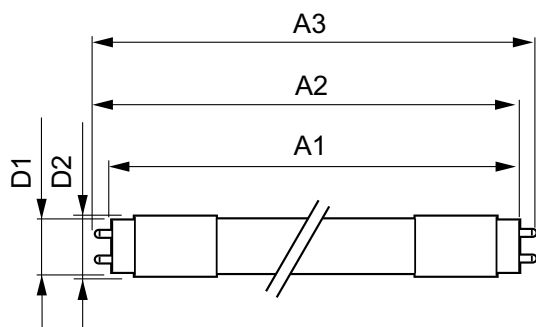
Approval and Application

Energy Efficiency Class	C
Energy Saving Product	Yes
Approval Marks	RoHS compliance TUV CE marking KEMA Keur certificate
Energy Consumption kWh/1000 h	19 kWh
EPREL Registration Number	1206970

Product Data

Order product name	MAS LEDtube 1500mm HO 18.2W 840 T8
Full product name	MASTER LEDtube 1500mm HO 18.2W 840 T8
Full product code	871869959243100
Order code	59243100
Material Nr. (12NC)	929001923002
Numerator - Quantity Per Pack	1
EAN/UPC - Product/Case	8718699592431
Numerator - Packs per outer box	10
EAN/UPC - Case	8718699592448

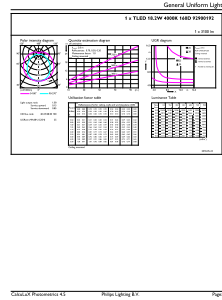
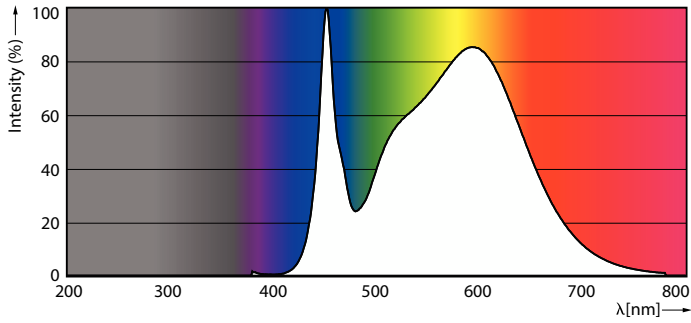
Dimensional drawing



Product	D1	D2	A1	A2	A3
MAS LEDtube 1500mm HO 18.2W 840 T8	25.8 mm	28 mm	1,498.8 mm	1,505.9 mm	1,513 mm

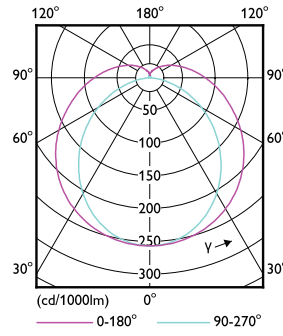
MASTER LEDtube EM/Mains T8

Photometric data



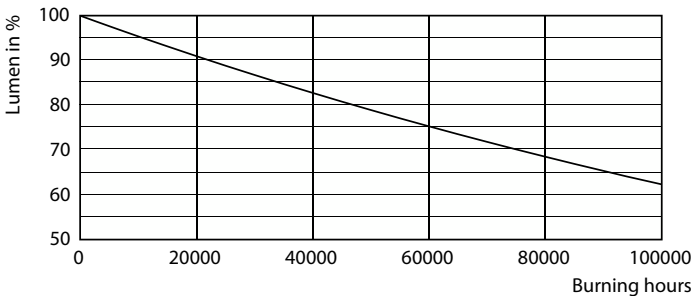
Spectral Power Distribution Colour - MAS LEDtube 1500mm HO 18.2W 840 T8

General uniform lighting - MAS LEDtube 1500mm HO 18.2W 840 T8

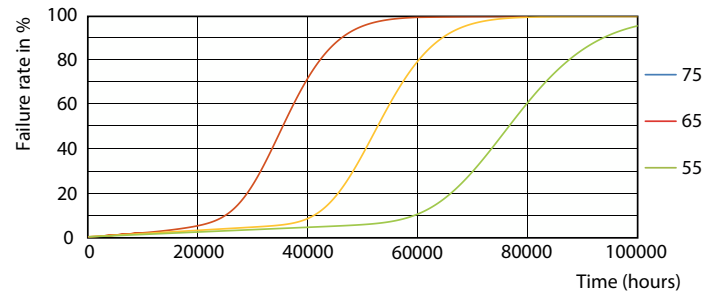


Light Distribution Diagram - MAS LEDtube 1500mm HO 18.2W 840 T8

Lifetime



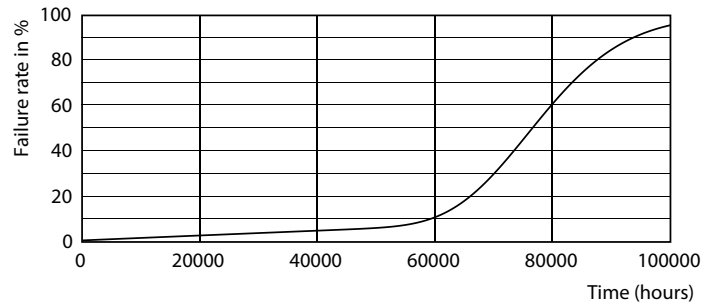
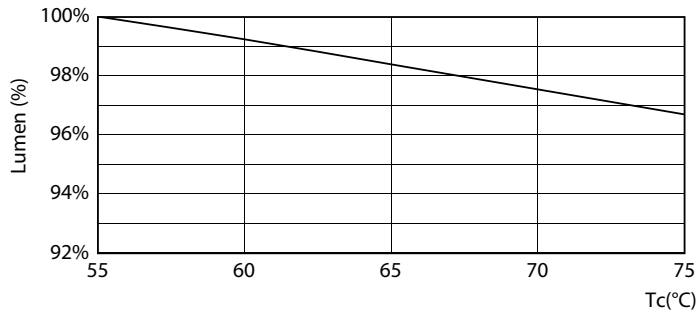
Lumen Maintenance Diagram - MAS LEDtube 1500mm HO 18.2W 840 T8



Life Expectancy Diagram - MAS LEDtube 1500mm HO 18.2W 840 T8

MASTER LEDtube EM/Mains T8

Lifetime



Lumen Maintenance Diagram - MAS LEDtube 1500mm HO 18.2W 840 T8

Life Expectancy Diagram - MAS LEDtube 1500mm HO 18.2W 840 T8



Life Expectancy Diagram - MAS LEDtube 1500mm HO 18.2W 840 T8

