



MASTER LEDtube EM/ Mains

MAS LEDtube 1500mm HO 18.2W 840 T8

The Philips MASTER LEDtube integrates a LED light source into a traditional fluorescent form factor. Its unique design creates a perfectly uniform visual appearance which cannot be distinguished from traditional fluorescent. This product is the ideal solution for up lighting in general lighting applications.

Product data

General Information	
Cap base	G13 [Medium Bi-Pin Fluorescent]
RoHS mark	RoHS mark
Nominal lifetime (nom.)	50000 h
Switching cycle	200000X
B50L70	50000 h

Light Technical	
Colour code	840 [CCT of 4,000 K]
Beam Angle (Nom)	160 °
Luminous flux (nom.)	3100 lm
Luminous flux (rated) (nom.)	3100 lm
Rated beam angle	160 °
Correlated colour temperature (nom.)	4000 K
Colour consistency	<6
Color rendering index (nom.)	83
LLMF at end of nominal lifetime (nom.)	70 %

Operating and Electrical	
Input frequency	50 to 60 Hz

Power (Rated) (Nom)	18.2 W
Lamp current (max.)	87 mA
Lamp current (min.)	79 mA
Starting time (nom.)	0.5 s
Warm-up time to 60% light (nom.)	0.5 s
Power factor (nom.)	0.9
Voltage (Nom)	220-240 V

Temperature	
T ambient (max.)	45 °C
T ambient (min.)	-20 °C
T storage (max.)	65 °C
T storage (min.)	-40 °C
T-Case maximum (nom.)	55 °C

Controls and Dimming	
Dimmable	No

MASTER LEDtube EM/Mains

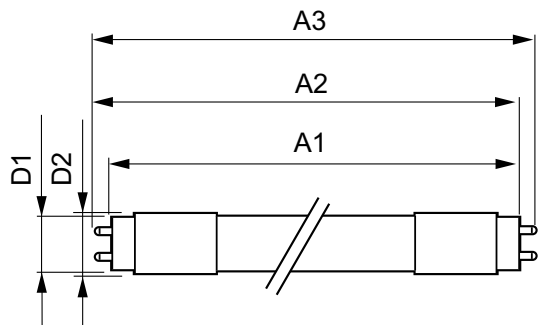
Mechanical and Housing	
Product length	1500 mm
Approval and Application	
Energy efficiency label (EEL)	A++
Energy-saving product	Yes
Approval marks	RoHS compliance CE marking KEMA Keur certificate
Energy Consumption kWh/1000 h	19 kWh
Product Data	
Full product code	871869959243100

Order product name	MAS LEDtube 1500mm HO 18.2W 840 T8
EAN/UPC – product	8718699592431
Order code	59243100
Numerator – quantity per pack	1
Numerator – packs per outer box	10
Material no. (12NC)	929001923002
Net weight (piece)	0.310 kg

Warnings and Safety

• -

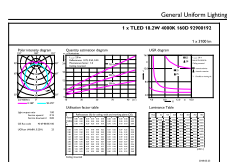
Dimensional drawing



TLED master HE 3100lm 18.2w 5ft 4000k

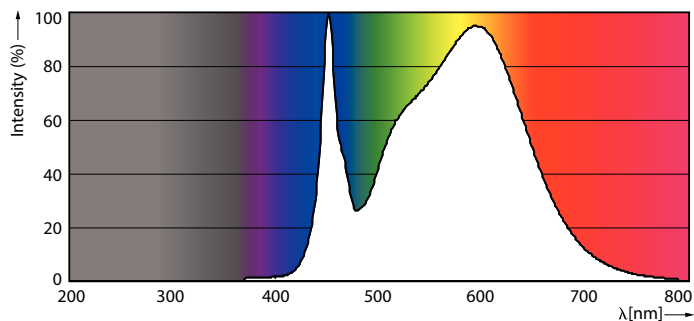
Product	D1	D2	A1	A2	A3
MAS LEDtube 1500mm HO 18.2W 840 T8	25.8 mm	28 mm	1498.8 mm	1505.9 mm	1513 mm

Photometric data



General Uniform Lighting

LEDtube MAS HO 18.2W G13 840 16D ND



LEDtube MAS HO G13

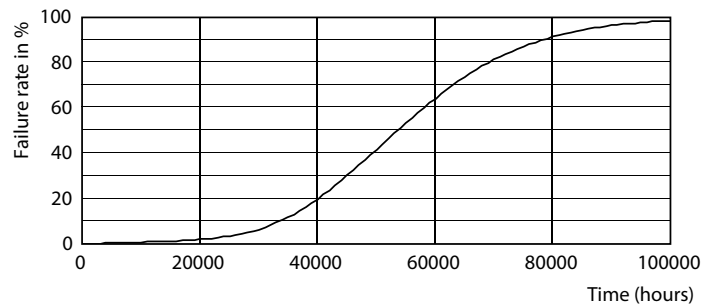
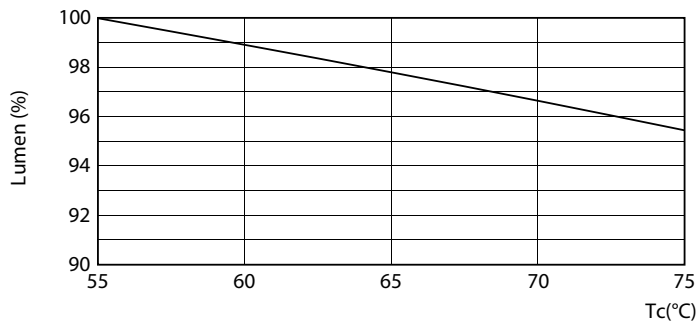
MASTER LEDtube EM/Mains

Photometric data



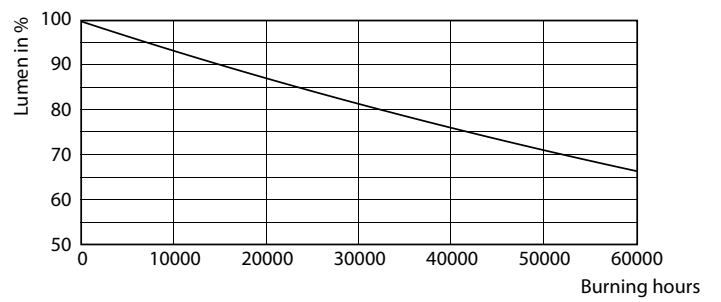
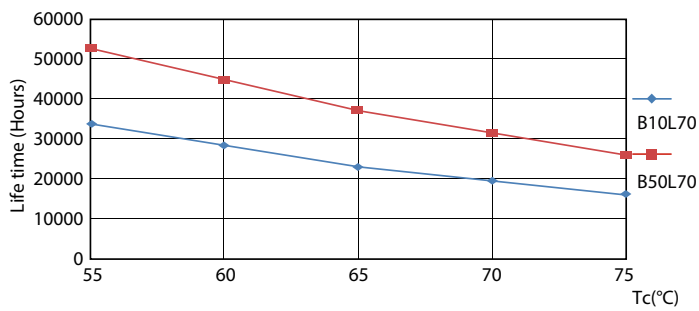
LEDtube T8 MAS HO G13

Lifetime



LEDtube T8 MAS HO 18.2W G13

LEDtube T8 MAS HO G13

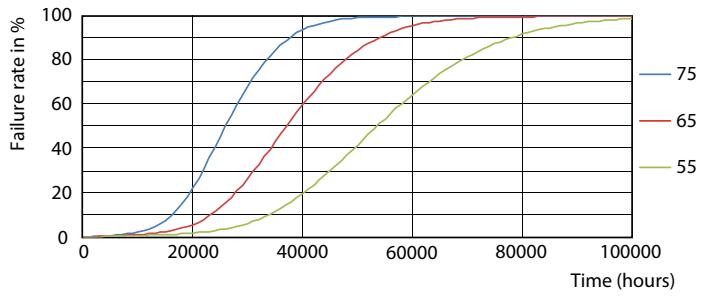


LEDtube T8 MAS HO G13

LEDtube T8 MAS HO G13

MASTER LEDtube EM/Mains

Lifetime



LEDtube T8 MAS HO G13

