



# MASTER LEDtube EM/ Mains

## MAS LEDtube 1500mm HO 18.2W 840 T8

The Philips MASTER LEDtube integrates a LED light source into a traditional fluorescent form factor. Its unique design creates a perfectly uniform visual appearance which cannot be distinguished from traditional fluorescent. This product is the ideal solution for up lighting in general lighting applications.

### Product data

General Information	
Cap base	G13 [ Medium Bi-Pin Fluorescent]
RoHS mark	RoHS mark
Nominal lifetime (nom.)	60000 h
Switching cycle	200000X
B50L70	60000 h

Light Technical	
Colour Code	840 [ CCT of 4,000 K]
Beam Angle (Nom)	160 °
Lamp Luminous Flux 25°C EL (Nom)	3100 lm
Lamp Luminous Flux (Nom)	3100 lm
Rated beam angle	160 °
Colour Temperature, horizontal (Nom)	4000 K
Colour consistency	<6
Colour Rendering Index,horiz (Nom)	83
LLMF at end of nominal lifetime (nom.)	70 %

Operating and Electrical	
Input frequency	50 to 60 Hz

Power (Rated) (Nom)	18.2 W
Lamp current (max.)	87 mA
Lamp current (min.)	79 mA
Starting time (nom.)	0.5 s
Warm-up time to 60% light (nom.)	0.5 s
Power factor (nom.)	0.9
Voltage (Nom)	220-240 V

Temperature	
T ambient (max.)	45 °C
T ambient (min.)	-20 °C
T storage (max.)	65 °C
T storage (min.)	-40 °C
T-Case maximum (nom.)	55 °C

Controls and Dimming	
Dimmable	No

# MASTER LEDtube EM/Mains

## Mechanical and Housing

Product length 1500 mm

## Approval and Application

Energy efficiency label (EEL) A++

Energy-saving product Yes

Approval marks RoHS compliance CE marking KEMA Keur certificate

Energy Consumption kWh/1000 h 19 kWh

## Product Data

Full product code 871869959243100

Order product name MAS LEDtube 1500mm HO 18.2W 840 T8

EAN/UPC – product 8718699592431

Order code 929001923002

Numerator – quantity per pack 1

Numerator – packs per outer box 10

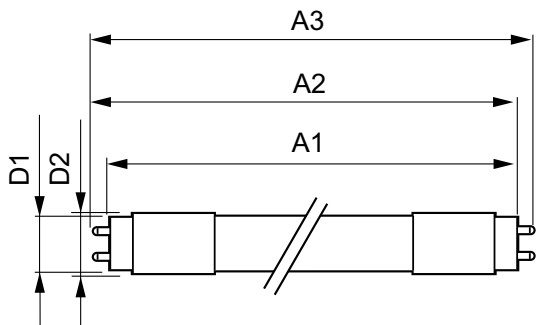
Material no. (12NC) 929001923002

Net weight (piece) 0.310 kg

## Warnings and Safety

• -

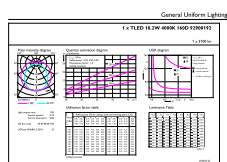
## Dimensional drawing



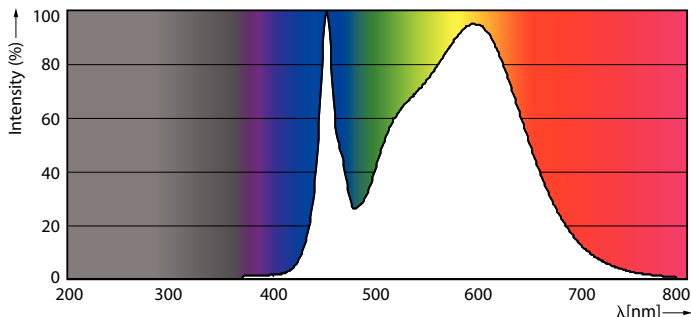
TLED master HE 3100lm 18.2w 5ft 4000k

Product	D1	D2	A1	A2	A3
MAS LEDtube 1500mm HO 18.2W 840 T8	25.8 mm	28 mm	1498.8 mm	1505.9 mm	1513 mm

## Photometric data



General Uniform Lighting

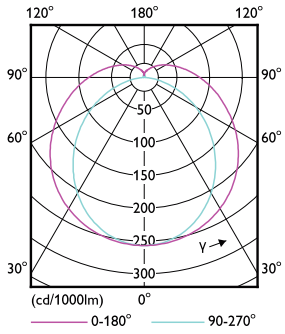


LEDtube MAS HO 18.2W G13 840 16D ND

LEDtube MAS HO G13

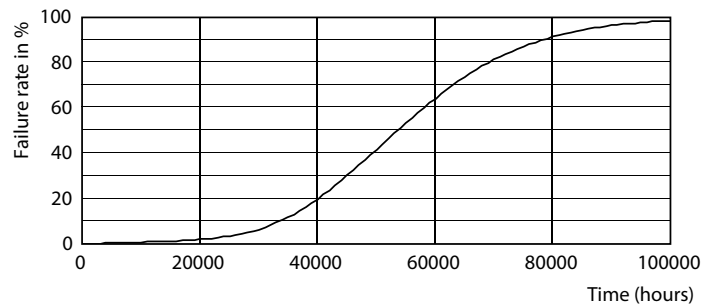
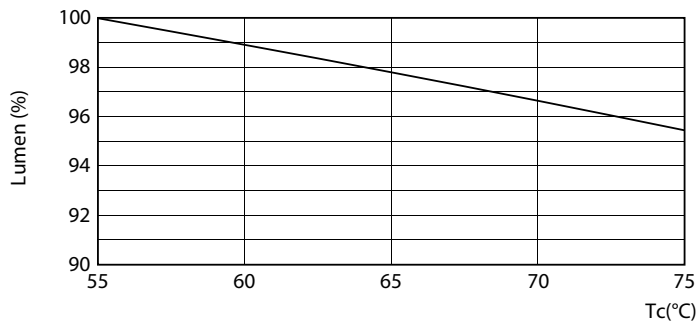
# MASTER LEDtube EM/Mains

## Photometric data



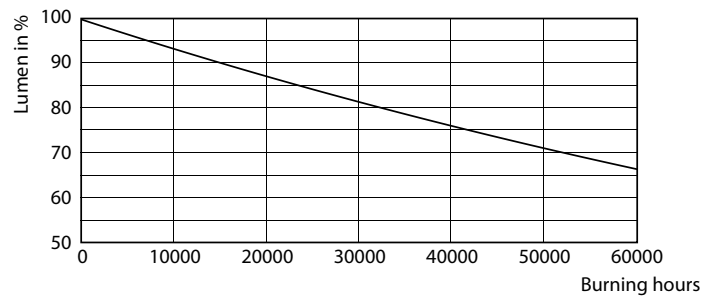
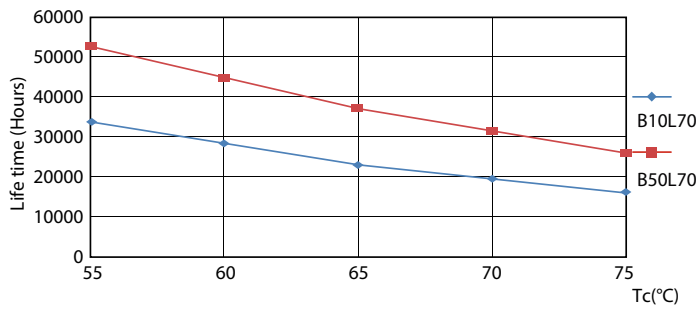
LEDtube T8 MAS HO G13

## Lifetime



LEDtube T8 MAS HO 18.2W G13

LEDtube T8 MAS HO G13

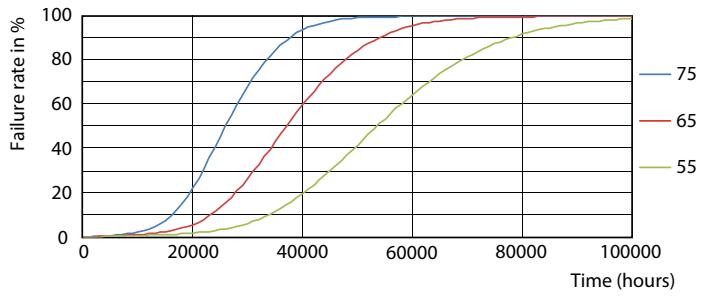


LEDtube T8 MAS HO G13

LEDtube T8 MAS HO G13

# MASTER LEDtube EM/Mains

## Lifetime



LEDtube T8 MAS HO G13

