



CorePro LED PLS



CorePro LED PLS 5W 830 2P G23

The Philips CorePro LED PLS integrates a LED light source into a traditional fluorescent form factor. This product is the ideal solution for uplampping in general lighting applications: it meets basic lighting requirements, offers significant energy savings and is environmentally friendly.

Product data

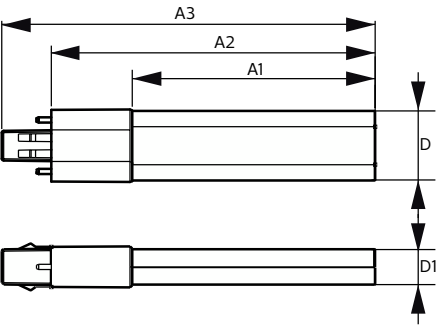
General Information			
Cap base	G23	Input frequency	50 to 60 Hz
Nominal lifetime	30,000 h	Power Consumption	5 W
Switching Cycle	50,000	Starting time (nom.)	0.5 s
Lighting Technology	LED	Warm-up time to 60% light	0.5 s
Flux measurement reference	Sphere	Power Factor (Fraction)	0.9
CE mark	Yes	Voltage (nom.)	220-240 V
EU RoHS compliant	Yes	LED alternative to fluorescent lamp power	11 W
		Inrush current at mains	3
Light Technical		Max. lamp no. on MCB B type 10A — Mains	159
Colour Code	830 [CCT of 3000K]	Max. lamp no. on MCB B type 10A — EM ballast without Comp. Cap.	220
Beam angle (nom.)	120 degree(s)	Max. lamp no. on MCB B type 10A — EM ballast with Comp. Cap.	30
Luminous Flux	520 lm	Max. lamp no. on MCB B type 16A — Mains	306
Colour designation	White (WH)	Max. lamp no. on MCB B type 16A — EM ballast without Comp. Cap.	330
Correlated Colour Temperature	3000 K	Max. lamp no. on MCB B type 16A — EM ballast with Comp. Cap.	49
Luminous efficacy (rated) (nom.)	104.00 lm/W	Ballast Compatibility	EM
Colour consistency	<6		
Colour rendering index (CRI)	82	Temperature	
LLMF at end of nominal lifetime (nom.)	70 %	Ambient temperature range	-20°C to 45°C
Photobiological safety according to EN 62471	RGO		
Operating and Electrical			
Line Frequency	50 to 60 Hz		

CorePro LED PLS

T-Case maximum (nom.)	83 °C
Controls and Dimming	
Dimmable	No
Mechanical and Housing	
Bulb material	Plastic
Product length	170 mm
Bulb shape	PL-S
Approval and Application	
Energy Efficiency Class	F
Energy-saving product	Yes
Approval marks	TUV CE marking RoHS compliance KEMA Keur certificate

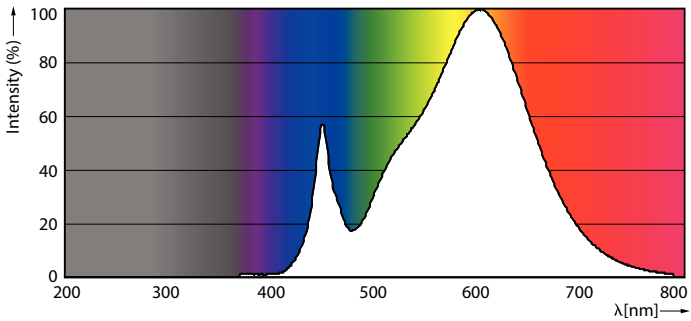
Energy consumption kWh/1,000 hours	5 kWh
EPREL registration number	403566
Product Data	
Order product name	CorePro LED PLS 5W 830 2P G23
Full product name	CorePro LED PLS 5W 830 2P G23
Full EOC	871869959666800
Order code	59666800
Material no. (12 NC)	929001926302
SAP numerator – quantity per pack	1
EAN/UPC – Product/Case	8718699596668
Numerator – packs per outer box	20
EAN/UPC – Case	8718699596675

Dimensional drawing

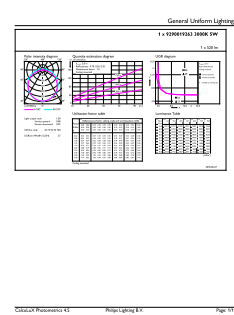


Product	D	D1	A1	A2	A3
CorePro LED PLS 5W 830 2P G23	31.1 mm	15.8 mm	108 mm	144 mm	166 mm

Photometric data

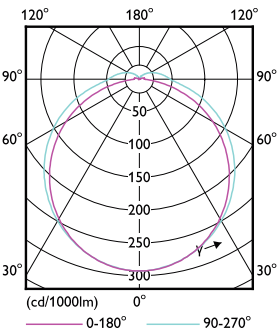


Spectral Power Distribution Colour - CorePro LED PLS 5W 830 2P G23



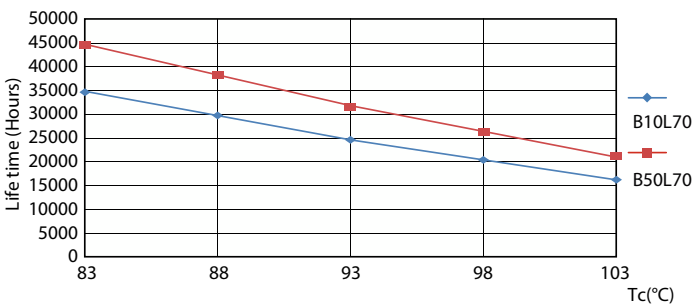
General uniform lighting - CorePro LED PLS 5W 830 2P G23

Photometric data

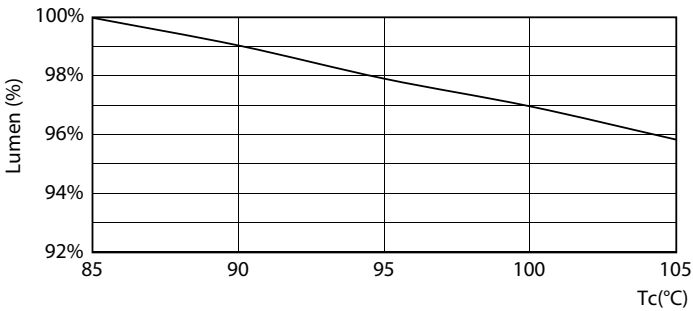


Light Distribution Diagram - CorePro LED PLS 5W 830 2P G23

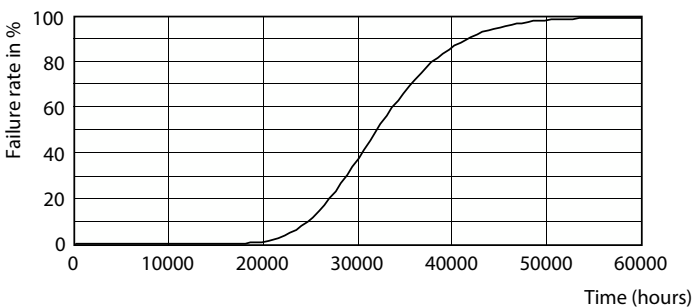
Lifetime



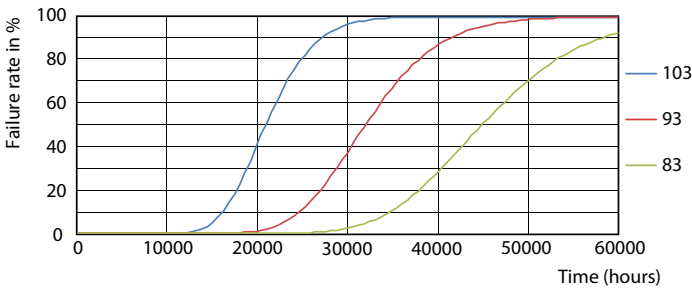
Life Expectancy Diagram - CorePro LED PLS 5W 830 2P G23



Lumen Maintenance Diagram - CorePro LED PLS 5W 830 2P G23



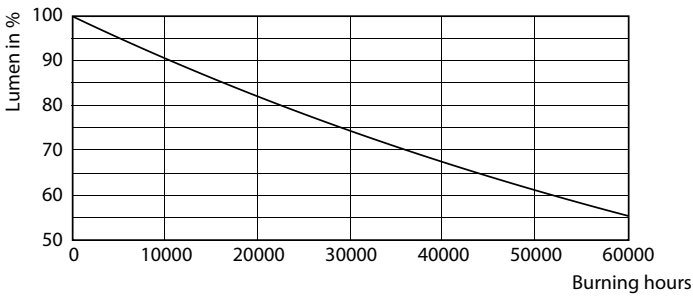
Life Expectancy Diagram - CorePro LED PLS 5W 830 2P G23



Life Expectancy Diagram - CorePro LED PLS 5W 830 2P G23

CorePro LED PLS

Lifetime



Lumen Maintenance Diagram - CorePro LED PLS 5W 830 2P G23

