



# CorePro LED PLS

## CorePro LED PLS 5W 840 2P G23

The Philips CorePro LED PLS integrates a LED light source into a traditional fluorescent form factor. This product is the ideal solution for uplampping in general lighting applications: it meets basic lighting requirements, offers significant energy savings, and is environment-friendly.

### Product data

General Information	
Cap-Base	G23
Nominal lifetime	30,000 hour(s)
Switching Cycle	50,000
Lighting Technology	LED
Flux measurement reference	Sphere
CE mark	Yes
EU RoHS compliant	Yes
Light Technical	
Color Code	840 [CCT of 4000K]
Beam Angle (Nom)	120 degree(s)
Luminous Flux	550 lm
Color Designation	Cool White (CW)
Correlated Color Temperature (Nom)	4000 K
Luminous Efficacy (rated) (Nom)	110.00 lm/W
Color Consistency	<6
Color rendering index (CRI)	82
LLMF At End Of Nominal Lifetime (Nom)	70 %
Photobiological safety according to EN 62471	RG0
Operating and Electrical	
Line Frequency	50 to 60 Hz

Input Frequency	50 to 60 Hz
Power Consumption	5 W
Starting Time (Nom)	0.5 s
Warm-up time to 60% light	0.5 s
Power Factor (Fraction)	0.9
Voltage (Nom)	220-240 V
LED alternative to fluorescent lamp power	11 W
Inrush current at mains	3
Max. lamp no. on MCB B type 10A - Mains	159
Max. lamp no. on MCB B type 10A – EM ballast without Comp. Cap.	220
Max. lamp no. on MCB B type 10A – EM ballast with Comp. Cap.	30
Max. lamp no. on MCB B type 16A - Mains	306
Max. lamp no. on MCB B type 16A – EM ballast without Comp. Cap.	330
Max. lamp no. on MCB B type 16A – EM ballast with Comp. Cap.	49
Ballast Compatibility	EM

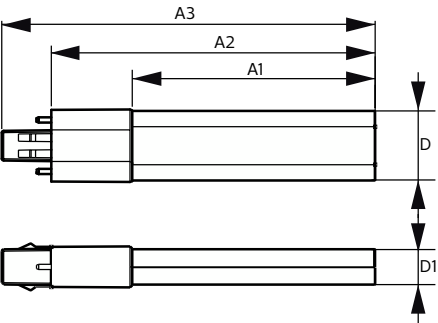
Temperature	
Ambient temperature range	-20 °C to 45 °C

CorePro LED PLS

T-Case Maximum (Nom)	83 °C
<b>Controls and Dimming</b>	
Dimmable	No
<b>Mechanical and Housing</b>	
Bulb Material	Plastic
Product Length	170 mm
Bulb Shape	PL-S
<b>Approval and Application</b>	
Energy Efficiency Class	F
Energy Saving Product	Yes
Approval Marks	TUV CE marking RoHS compliance KEMA Keur certificate

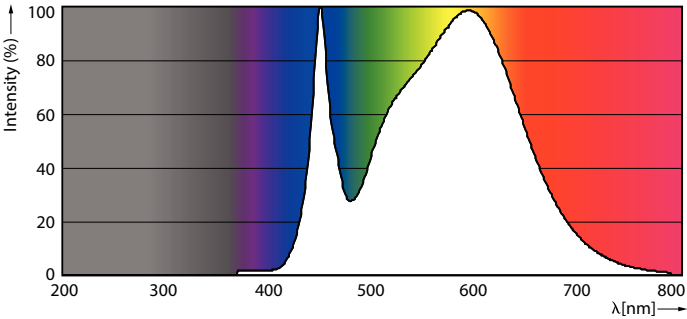
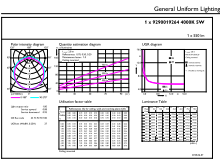
Energy Consumption kWh/1000 h	5 kWh
EPREL Registration Number	403567
<b>Product Data</b>	
Order product name	CorePro LED PLS 5W 840 2P G23
Full product name	CorePro LED PLS 5W 840 2P G23
Full product code	871869959668200
Order code	59668200
Material Nr. (12NC)	929001926402
Numerator - Quantity Per Pack	1
EAN/UPC - Product/Case	8718699596682
Numerator - Packs per outer box	20
EAN/UPC - Case	8718699596699

Dimensional drawing



Product	D	D1	A1	A2	A3
CorePro LED PLS 5W 840 2P G23	31.1 mm	15.8 mm	108 mm	144 mm	166 mm

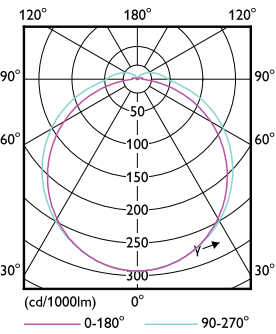
Photometric data



General uniform lighting - CorePro LED PLS 5W 840 2P G23

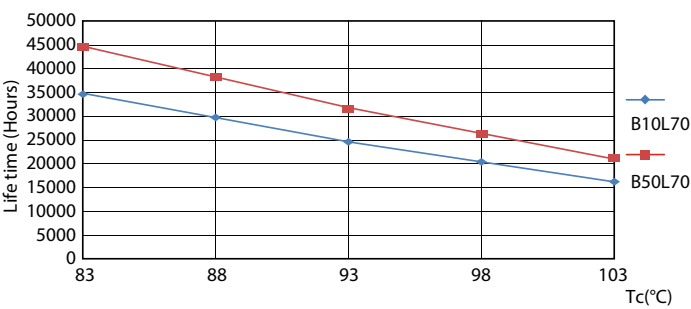
Spectral Power Distribution Colour - CorePro LED PLS 5W 840 2P G23

Photometric data

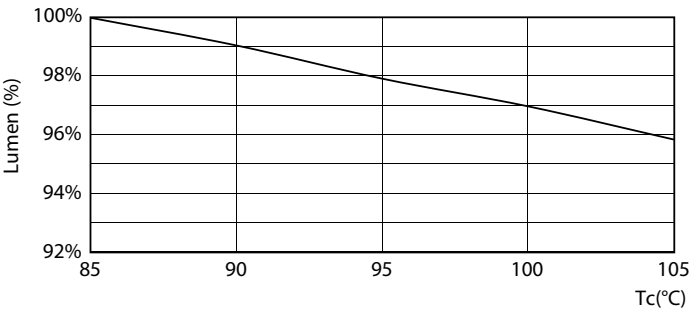


Light Distribution Diagram - CorePro LED PLS 5W 840 2P G23

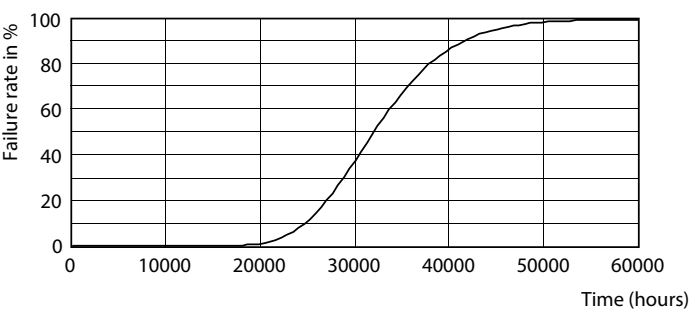
Lifetime



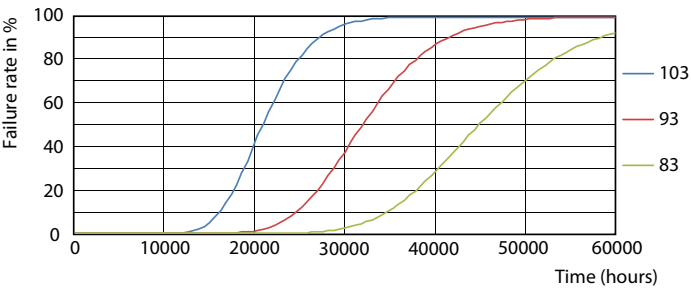
Life Expectancy Diagram - CorePro LED PLS 5W 840 2P G23



Lumen Maintenance Diagram - CorePro LED PLS 5W 840 2P G23



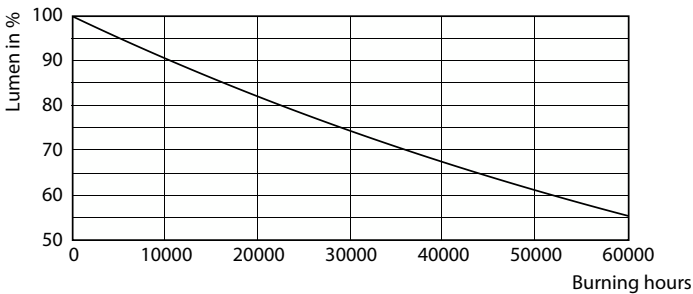
Life Expectancy Diagram - CorePro LED PLS 5W 840 2P G23



Life Expectancy Diagram - CorePro LED PLS 5W 840 2P G23

CorePro LED PLS

Lifetime



Lumen Maintenance Diagram - CorePro LED PLS 5W 840 2P G23

