



# T8

## 8.5T8/COR/24-840/MF11/G 10/1

Our TLEDs are available in InstantFit (Type A / Type C) or MainsFit (Ballast bypass / Type B) versions. The InstantFit lamps work on a broad variety of ballasts and LED drivers. Only InstantFit has over 15,000 lamp & ballast combinations delivering even light output, energy savings and a long lifetime. Our MainsFit products feature a double-ended design, simplifying installation while a proprietary safety circuit minimizes a shock risk. Lamp sizes range from 2-foot to 8-foot and U-bend with a variety of lumen outputs.

### Product data

General Information	
Cap-Base	G13 [ Medium Bi-Pin Fluorescent]
EU RoHS compliant	Yes
Nominal Lifetime (Nom)	50000 h
Switching Cycle	50000X
Light Technical	
Color Code	840 [ CCT of 4000K]
Beam Angle (Nom)	180 °
Luminous Flux (Nom)	1150 lm
Color Designation	Cool White (CW)
Correlated Color Temperature (Nom)	4000 K
Luminous Efficacy (rated) (Nom)	135.00 lm/W
Color Consistency	<6
Color Rendering Index (Nom)	82
LLMF At End Of Nominal Lifetime (Nom)	70 %
Operating and Electrical	
Input Frequency	50 to 60 Hz
Power (Nom)	8.5 W

Lamp Current (Max)	75 mA
Lamp Current (Min)	36 mA
Starting Time (Nom)	0.9 s
Warm Up Time to 60% Light (Nom)	0.9 s
UL Type	Type B - bypass the ballast
Power Factor (Nom)	0.9
Voltage (Nom)	120-277 V
Temperature	
T-Ambient (Max)	45 °C
T-Ambient (Min)	-20 °C
T-Storage (Max)	65 °C
T-Storage (Min)	-40 °C
T-Case Maximum (Nom)	50 °C
Controls and Dimming	
Dimmable	No

# T8

## Mechanical and Housing

Product Length 600 mm

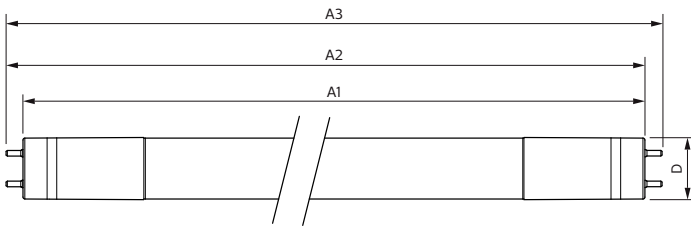
## Approval and Application

Energy Efficiency Label (EEL) Not applicable  
 Energy Saving Product Yes  
 Approval Marks UL certificate RoHS compliance DLC compliance  
 Energy Consumption kWh/1000 h - kWh  
 Energy Certifications DLC Standard

## Product Data

Order product name 8.5T8/COR/24-840/MF11/G 10/1  
 EAN/UPC - Product 046677535476  
 Order code 929001934004  
 Numerator - Quantity Per Pack 1  
 Numerator - Packs per outer box 10  
 Material Nr. (12NC) 929001934004  
 Net Weight (Piece) 0.200 kg

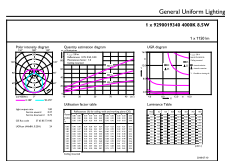
## Dimensional drawing



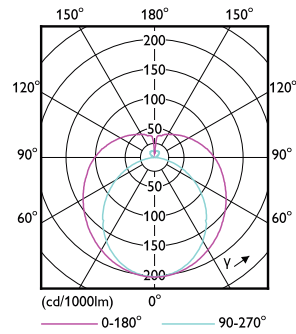
Product	D	A1	A2	A3
8.5T8/COR/24-840/MF11/G 10/1	25.9 mm	589.5 mm	595.7 mm	604 mm

TLED MF CorePro 2ft 1100lm 4000K

## Photometric data



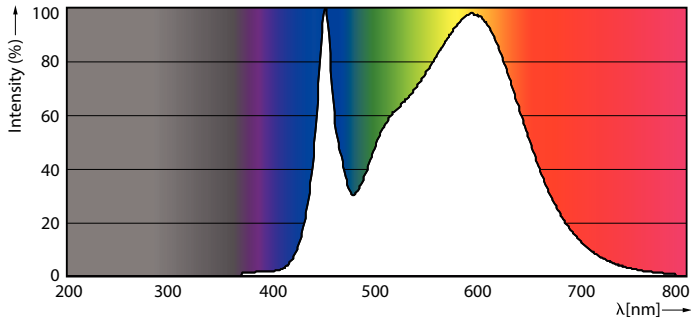
General Uniform Lighting  
 1 x TLED MF CorePro 2ft 1100lm 4000K  
 1100lm  
 4000K  
 2ft  
 1100lm  
 4000K  
 2ft



8.5W G13

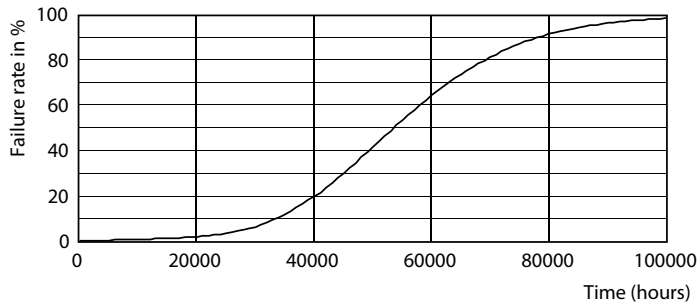
8.5W G13 840

Photometric data

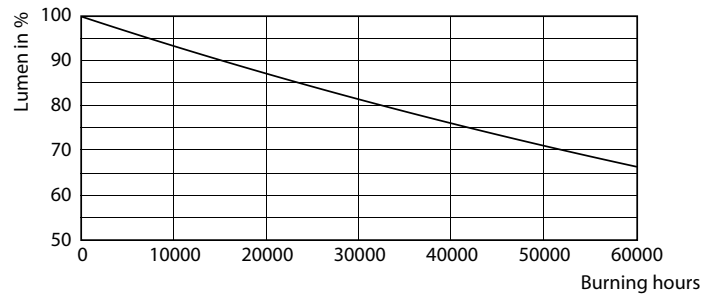


8.5W G13

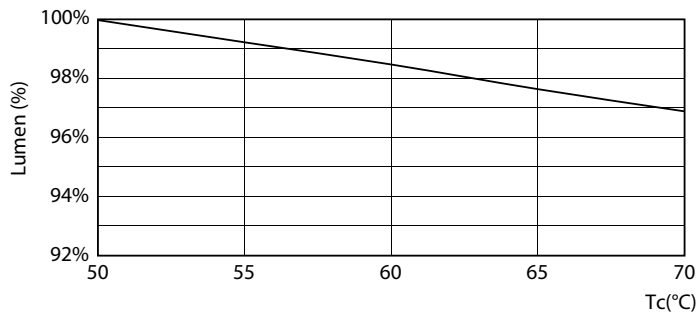
Lifetime



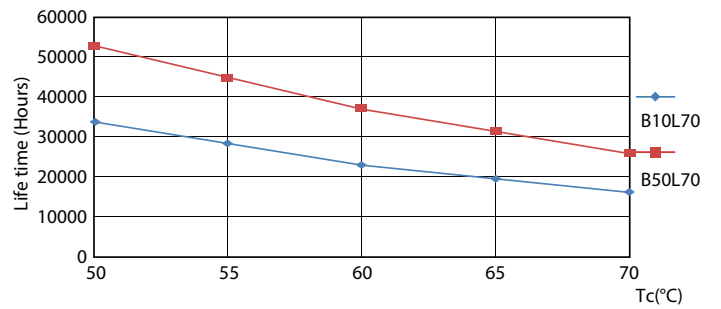
8.5W G13



8.5W G13



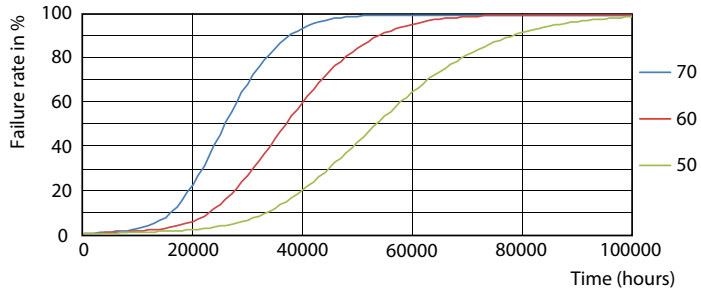
8.5W G13



8.5W G13

# T8

## Lifetime



8.5W G13

