



CorePro MainsFit (UL Type-B) T8

8.5T8/COR/24-850/MF11/G 10/1

The CorePro MainsFit (UL Type B) lamps are designed to be the perfect retrofit solution to move from traditional fluorescent lamps to energy saving LEDs. This ballast bypass lamp has everything needed built into the lamp with proven energy savings, long life (up to 50k hours), surge suppression and industry leading safety features. All lamps in the CorePro MainsFit family are double-ended to help simplify the installation. In addition, all lamps meet the Philips standards for light quality so that end users will be in a comfortable environment regardless of the CorePro MainsFit lamp type.

Product data

General Information	
Cap-Base	G13 [Medium Bi-Pin Fluorescent]
Nominal lifetime	50,000 hour(s)
Switching Cycle	50,000
Lighting Technology	LED
EU RoHS compliant	Yes

Light Technical	
Color Code	850 [CCT of 5000K]
Beam Angle (Nom)	180 degree(s)
Luminous Flux	1,150 lumen
Color Designation	Daylight
Correlated Color Temperature (Nom)	5000 K
Luminous Efficacy (rated) (Nom)	135.00 lm/W
Color Consistency	<5
Color rendering index (CRI)	82

Operating and Electrical	
Line Frequency	50 to 60 Hz
Input Frequency	50 to 60 Hz
Power Consumption	8.5 W
Wattage Equivalent	17 W
Starting Time (Nom)	0.9 s
Warm-up time to 60% light	0.9 s
Power Factor (Fraction)	0.9
Voltage (Nom)	120-277 V

Temperature	
Ambient temperature range	-20 °C to 45 °C
T-Case Maximum (Nom)	122 °F

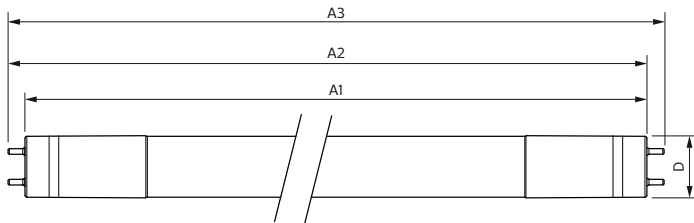
LLMF At End Of Nominal Lifetime (Nom)	70 %
---------------------------------------	------

CorePro MainsFit (UL Type-B) T8

Controls and Dimming	
Dimmable	No
Mechanical and Housing	
Bulb Finish	Frosted
Bulb Material	Glass
Product Length	23-5/8 inch
Bulb Shape	Tube, double-ended
Approval and Application	
Energy Saving Product	Yes
Approval Marks	UL certificate RoHS compliance DLC compliance
Energy Consumption kWh/1000 h	- kWh

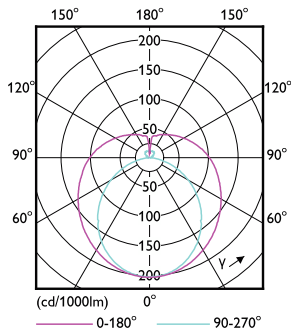
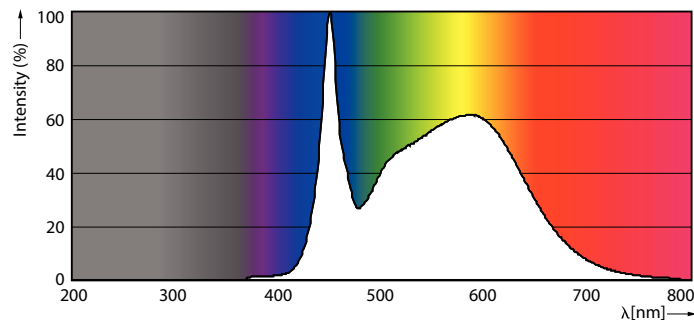
Energy Certifications	DLC Standard
Product Data	
Order product name	8.5T8/COR/24-850/MF11/G 10/1
Order code	535484
Numerator - Quantity Per Pack	1
Numerator - Packs per outer box	10
Material Nr. (12NC)	929001934104
Full product name	8.5T8/COR/24-850/MF11/G 10/1
EAN/UPC - Case	50046677535488
EAN/UPC - Product/Case	046677535483

Dimensional drawing



Product	D	A1	A2	A3
8.5T8/COR/24-850/MF11/G 10/1	1-1/16 inch	23-1/4 inch	23-1/2 inch	23-13/16 inch

Photometric data

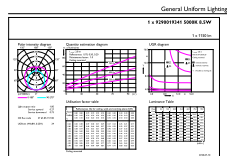


Spectral Power Distribution Colour - 8.5T8/COR/24-850/MF11/G 10/1

Light Distribution Diagram - 8.5T8/COR/24-850/MF11/G 10/1

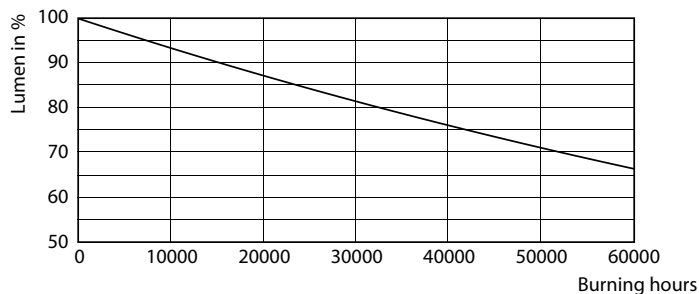
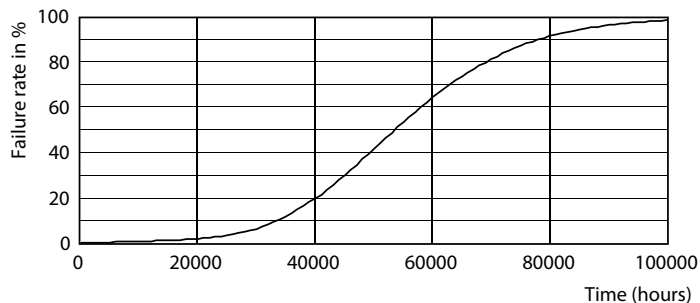
CorePro MainsFit (UL Type-B) T8

Photometric data

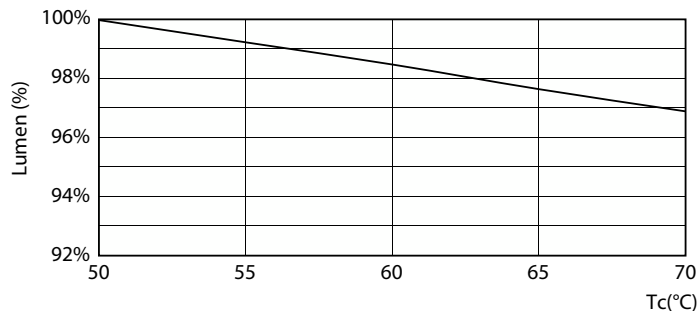


General uniform lighting - 8.5T8/COR/24-850/MF1/G 10/1

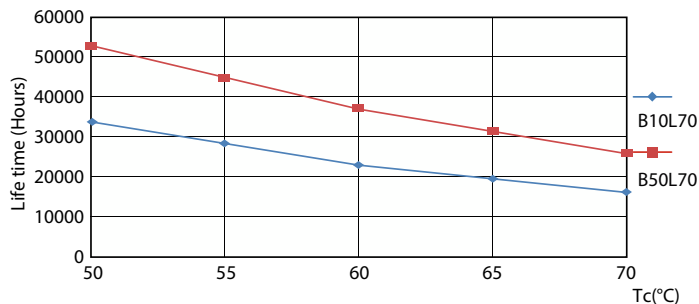
Lifetime



Life Expectancy Diagram - 8.5T8/COR/24-850/MF1/G 10/1



Lumen Maintenance Diagram - 8.5T8/COR/24-850/MF1/G 10/1

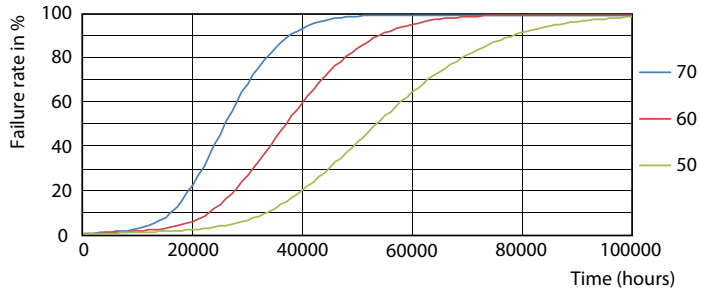


Lumen Maintenance Diagram - 8.5T8/COR/24-850/MF1/G 10/1

Life Expectancy Diagram - 8.5T8/COR/24-850/MF1/G 10/1

CorePro MainsFit (UL Type-B) T8

Lifetime



Life Expectancy Diagram - 8.5T8/COR/24-850/MF11/G 10/1

