



# T8

## 11.5T8/COR/36-830/MF13/G 10/1

Our TLEDs are available in InstantFit (Type A / Type C) or MainsFit (Ballast bypass / Type B) versions. The InstantFit lamps work on a broad variety of ballasts and LED drivers. Only InstantFit has over 15,000 lamp & ballast combinations delivering even light output, energy savings and a long lifetime. Our MainsFit products feature a double-ended design, simplifying installation while a proprietary safety circuit minimizes a shock risk. Lamp sizes range from 2-foot to 8-foot and U-bend with a variety of lumen outputs.

### Product data

| General Information                   |                                  |
|---------------------------------------|----------------------------------|
| Base                                  | G13 [ Medium Bi-Pin Fluorescent] |
| EU RoHS compliant                     | Yes                              |
| Nominal Lifetime (Nom)                | 50000 h                          |
| Switching Cycle                       | 50000X                           |
| Light Technical                       |                                  |
| Color Code                            | 830 [ CCT of 3000K]              |
| Beam Angle (Nom)                      | 180 °                            |
| Initial lumen (Nom)                   | 1300 lm                          |
| Correlated Color Temperature (Nom)    | 3000 K                           |
| Color Consistency                     | <6                               |
| Color Rendering Index (Nom)           | 82                               |
| LLMF At End Of Nominal Lifetime (Nom) | 70 %                             |
| Operating and Electrical              |                                  |
| Input Frequency                       | 50 to 60 Hz                      |
| Power (Rated) (Nom)                   | 11.5 W                           |
| Lamp Current (Max)                    | 101 mA                           |
| Lamp Current (Min)                    | 47 mA                            |

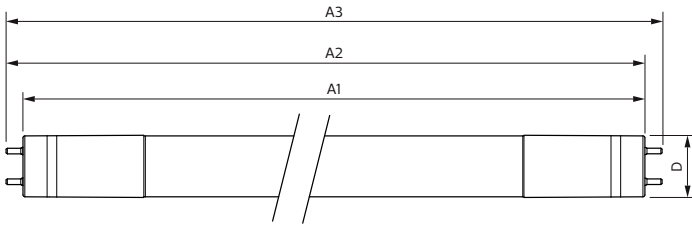
| Starting Time (Nom)             | 0.9 s     |
|---------------------------------|-----------|
| Warm Up Time to 60% Light (Nom) | 0.9 s     |
| Power Factor (Nom)              | 0.9       |
| Voltage (Nom)                   | 120-277 V |
| Temperature                     |           |
| T-Ambient (Max)                 | 45 °C     |
| T-Ambient (Min)                 | -20 °C    |
| T-Storage (Max)                 | 65 °C     |
| T-Storage (Min)                 | -40 °C    |
| T-Case Maximum (Nom)            | 50 °C     |
| Controls and Dimming            |           |
| Dimmable                        | No        |
| Mechanical and Housing          |           |
| Product Length                  | 900 mm    |
| Approval and Application        |           |
| Energy Saving Product           | Yes       |

# T8

|                              |                                               |
|------------------------------|-----------------------------------------------|
| <b>Approbation Marks</b>     | UL certificate RoHS compliance DLC compliance |
| <b>Energy Certifications</b> | DLC Standard                                  |
| <b>Product Data</b>          |                                               |
| <b>Order product name</b>    | 11.5T8/COR/36-830/MF13/G 10/1                 |
| <b>EAN/UPC - Product</b>     | 046677535490                                  |
| <b>Order code</b>            | 535492                                        |

|                                        |              |
|----------------------------------------|--------------|
| <b>Numerator - Quantity Per Pack</b>   | 1            |
| <b>Numerator - Packs per outer box</b> | 10           |
| <b>Material Nr. (12NC)</b>             | 929001934204 |
| <b>Net Weight (Piece)</b>              | 0.250 kg     |
| <b>Model Number</b>                    | 9290019342   |

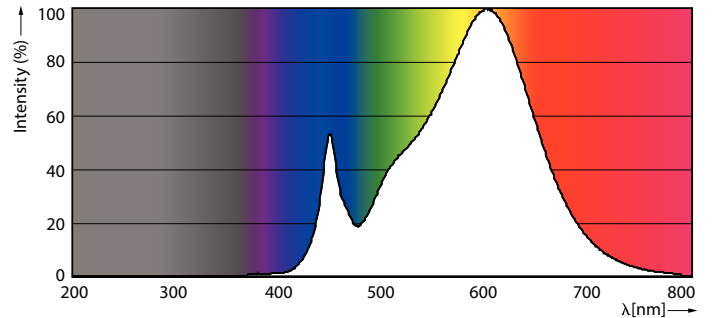
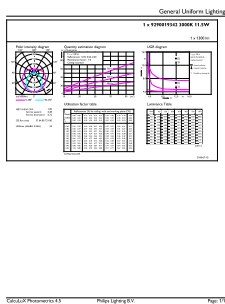
## Dimensional drawing



| Product                       | D       | A1       | A2       | A3       |
|-------------------------------|---------|----------|----------|----------|
| 11.5T8/COR/36-830/MF13/G 10/1 | 25.9 mm | 894.3 mm | 900.5 mm | 908.8 mm |

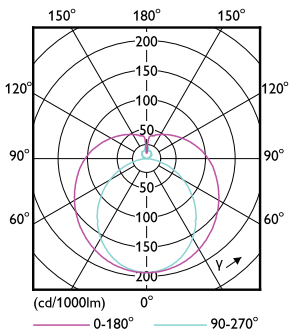
## TLED MF CorePro 3ft 1300lm 3000K

## Photometric data



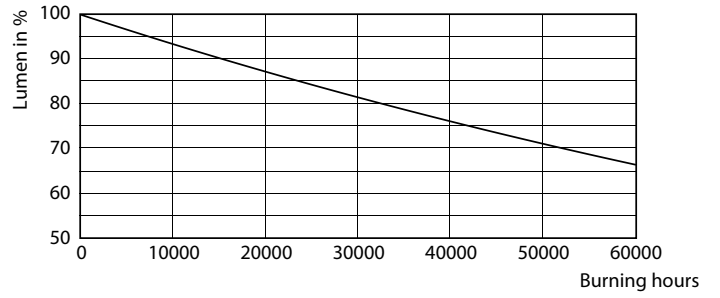
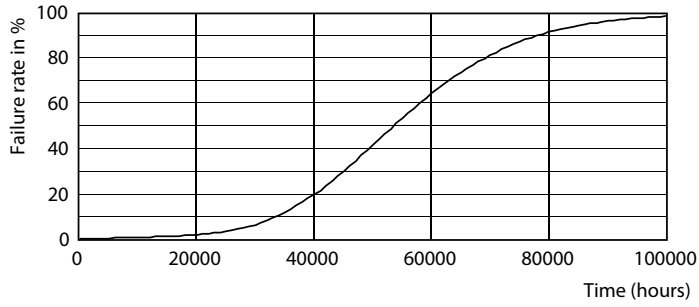
## 11-5W G13 830 3000K

## 11-5W G13



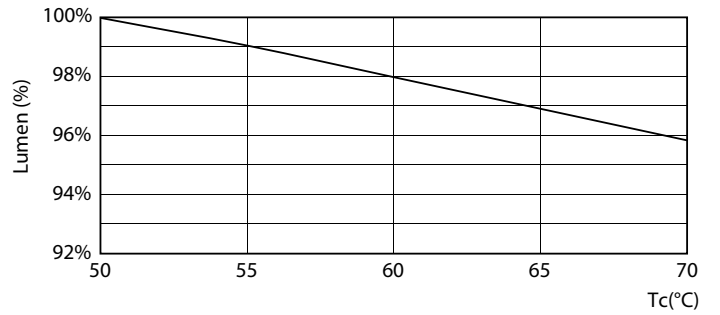
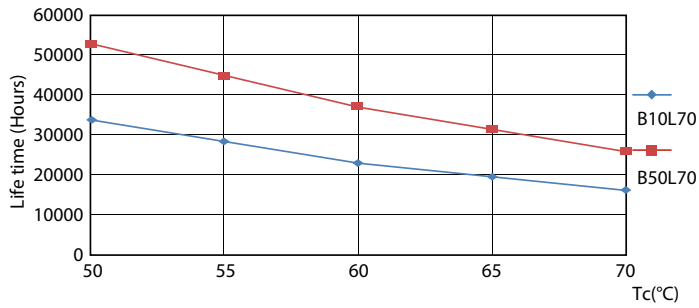
## 11.5W G13 840

Lifetime



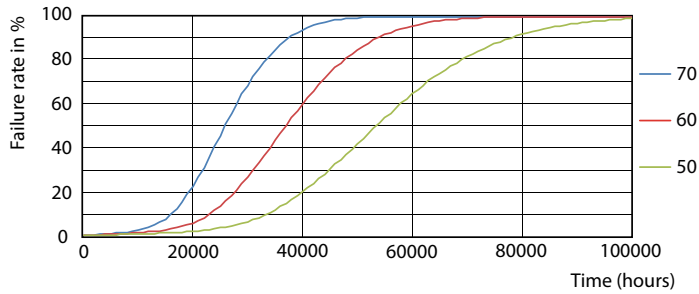
8.5W G13

8.5W G13



8.5W G13

11.5W



8.5W G13

