



CorePro LEDtube MainsFit T8

11.5T8/COR/36-850/MF14/G 10/1

Philips CorePro MainsFit (UL Type-B) T8 LED lamps use a double-ended design which significantly simplifies installation, saving installation time and costs. This ballast bypass product replaces either T8 or T12 lamps in fixtures containing shunted or non-shunted G13 (medium bi-pin) lamp holders for over 40% energy savings.

Product data

General Information	
Cap-Base	G13 [Medium Bi-Pin Fluorescent]
Nominal Lifetime (Nom)	50000 h
Switching Cycle	50000X
B50L70	50000 h

Light Technical	
Color Code	850 [CCT of 5000K]
Beam Angle (Nom)	180 °
Initial lumen (Nom)	1400 lm
Luminous Flux (Rated) (Nom)	1400 lm
Rated Beam Angle	180 °
Correlated Color Temperature (Nom)	5000 K
Color Consistency	<5
Color Rendering Index (Nom)	82
LLMF At End Of Nominal Lifetime (Nom)	70 %

Operating and Electrical	
Input Frequency	50 to 60 Hz
Power (Rated) (Nom)	11.5 W

Lamp Current (Max)	101 mA
Lamp Current (Min)	47 mA
Starting Time (Nom)	0.9 s
Warm Up Time to 60% Light (Nom)	0.9 s
Power Factor (Nom)	0.9
Voltage (Nom)	120-277 V

Temperature	
T-Ambient (Max)	45 °C
T-Ambient (Min)	-20 °C
T-Storage (Max)	65 °C
T-Storage (Min)	-40 °C
T-Case Maximum (Nom)	50 °C

Controls and Dimming	
Dimmable	No

Mechanical and Housing	
Product Length	900 mm

CorePro LEDtube MainsFit T8

Approval and Application

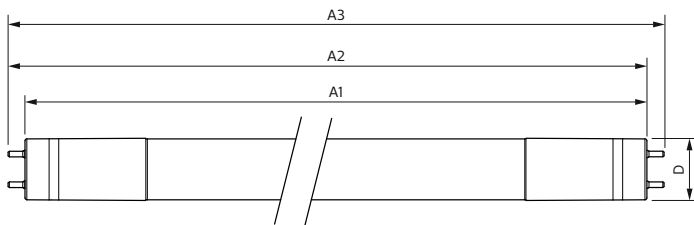
Energy Saving Product	Yes
Approval Marks	UL certificate RoHS compliance DLC compliance
DesignLights Consortium Qualified Product List	DesignLights Consortium Qualified Product List

Product Data

Order product name	11.5T8/COR/36-850/MF14/G 10/1
--------------------	-------------------------------

EAN/UPC - Product	046677535520
Order code	535526
Numerator - Quantity Per Pack	1
Numerator - Packs per outer box	10
Material Nr. (12NC)	929001934504
Net Weight (Piece)	0.250 kg
Model Number	9290019345

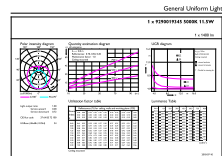
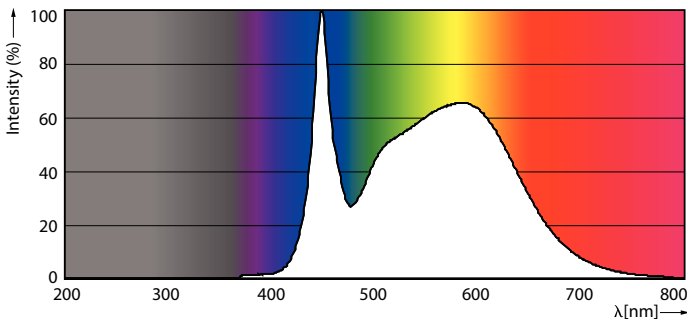
Dimensional drawing



Product	D	A1	A2	A3
11.5T8PRO/36-850/BB14/G 10/1	25.9 mm	894.3 mm	900.5 mm	908.8 mm
FB				

TLED MF CorePro 3ft 1400lm 5000K

Photometric data

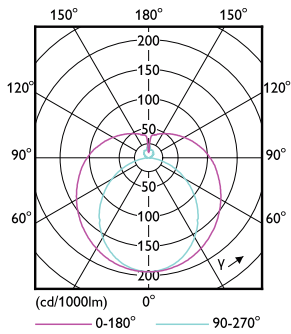


11-5W G13

11-5W G13 850 5000K

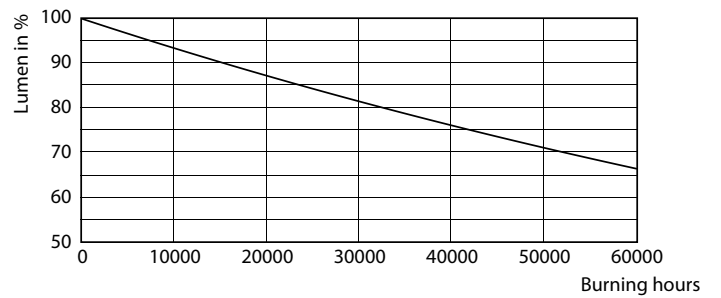
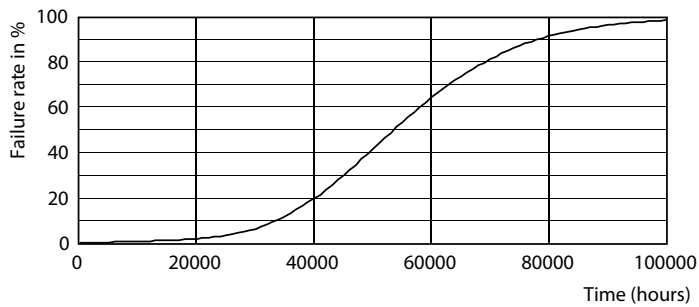
CorePro LEDtube MainsFit T8

Photometric data



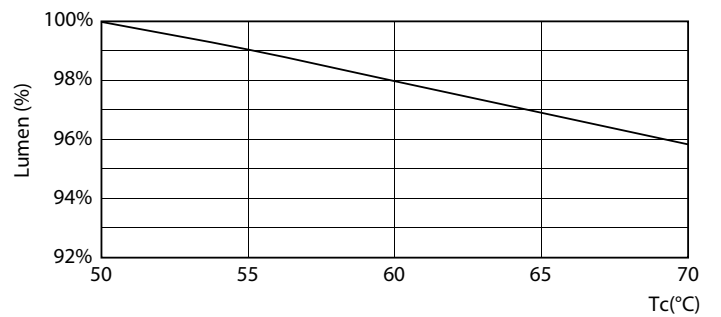
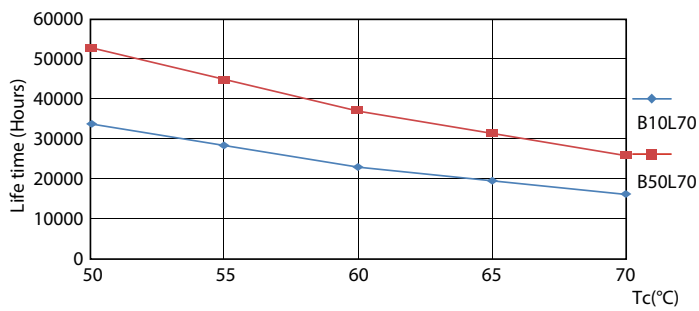
11-5W G13 830 3000K

Lifetime



8-5W G13

8-5W G13

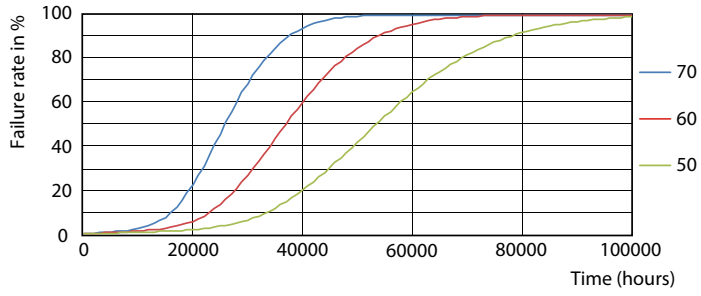


8-5W G13

11-5W G13

CorePro LEDtube MainsFit T8

Lifetime



8-5W G13

