



T8

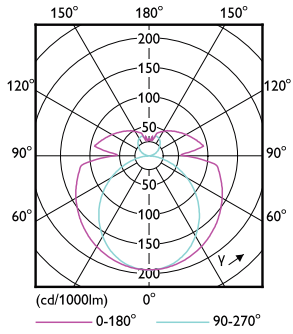
15.5T8-6U/COR/24-835/MF20/G 10/1

Our TLEDs are available in InstantFit (Type A / Type C) or MainsFit (Ballast bypass / Type B) versions. The InstantFit lamps work on a broad variety of ballasts and LED drivers. Only InstantFit has over 15,000 lamp & ballast combinations delivering even light output, energy savings and a long lifetime. Our MainsFit products feature a double-ended design, simplifying installation while a proprietary safety circuit minimizes a shock risk. Lamp sizes range from 2-foot to 8-foot and U-bend with a variety of lumen outputs.

Product data

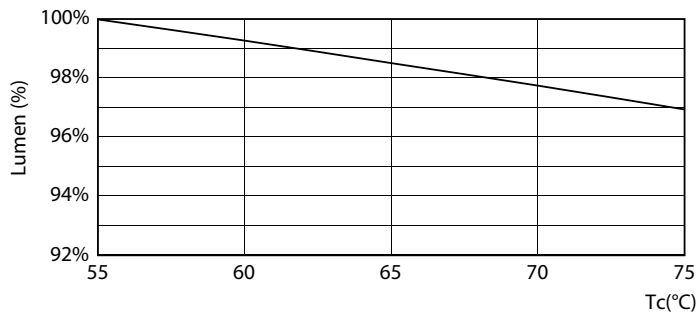
General Information		Lamp Current (Max)	
Base	2G13 [2G13]	Lamp Current (Max)	140 mA
Nominal Lifetime (Nom)	50000 h	Lamp Current (Min)	63 mA
Switching Cycle	50000X	Starting Time (Nom)	0.9 s
B50L70	50000 h	Warm Up Time to 60% Light (Nom)	0.9 s
		Power Factor (Nom)	0.9
		Voltage (Nom)	120-277 V
Light Technical		Temperature	
Color Code	835 [CCT of 3500K]	T-Ambient (Max)	45 °C
Beam Angle (Nom)	180 °	T-Ambient (Min)	-20 °C
Initial lumen (Nom)	2000 lm	T-Storage (Max)	65 °C
Luminous Flux (Rated) (Nom)	2000 lm	T-Storage (Min)	-40 °C
Rated Beam Angle	180 °	T-Case Maximum (Nom)	51 °C
Correlated Color Temperature (Nom)	3500 K		
Color Consistency	<6	Controls and Dimming	
Color Rendering Index (Nom)	82	Dimmable	No
LLMF At End Of Nominal Lifetime (Nom)	70 %		
Operating and Electrical		Mechanical and Housing	
Input Frequency	50 to 60 Hz	Product Length	600 mm
Power (Rated) (Nom)	15.5 W		

Photometric data

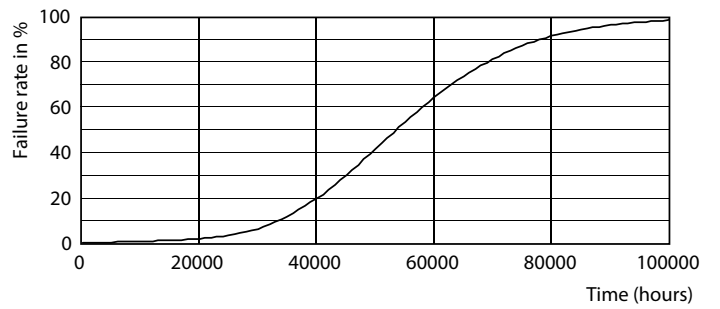


15-5W 2G13 830 3000K

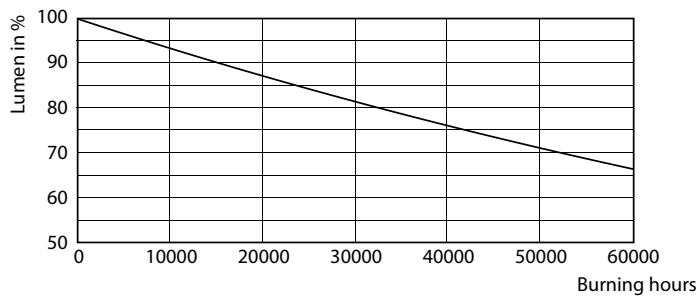
Lifetime



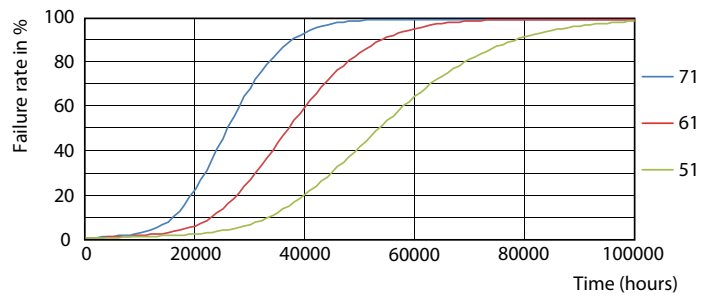
15-5W 2G13



8-5W G13



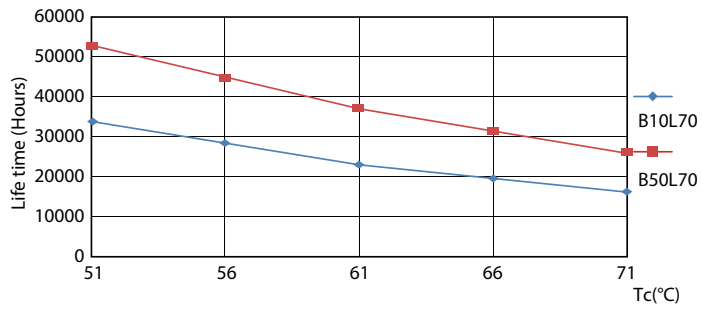
8-5W G13



15-5W 2G13

T8

Lifetime



15-5W 2G13

