



# CorePro LEDtube MainsFit T8

## 15.5T8-6U/COR/24-840/MF21/G 10/1

Philips CorePro MainsFit (UL Type-B) T8 LED lamps use a double-ended design which significantly simplifies installation, saving installation time and costs. This ballast bypass product replaces either T8 or T12 lamps in fixtures containing shunted or non-shunted G13 (medium bi-pin) lamp holders for over 40% energy savings.

### Product data

General Information		Lamp Current (Max)	
Cap-Base	2G13 [ 2G13]	Lamp Current (Min)	140 mA
Nominal Lifetime (Nom)	50000 h	Starting Time (Nom)	63 mA
Switching Cycle	50000X	Warm Up Time to 60% Light (Nom)	0.9 s
B50L70	50000 h	Power Factor (Nom)	0.9
Light Technical		Voltage (Nom)	120-277 V
Color Code	841 [ CCT of 4100K (841)]	Temperature	
Beam Angle (Nom)	180 °	T-Ambient (Max)	45 °C
Initial lumen (Nom)	2100 lm	T-Ambient (Min)	-20 °C
Luminous Flux (Rated) (Nom)	2100 lm	T-Storage (Max)	65 °C
Rated Beam Angle	180 °	T-Storage (Min)	-40 °C
Correlated Color Temperature (Nom)	4000 K	T-Case Maximum (Nom)	51 °C
Color Consistency	<6	Controls and Dimming	
Color Rendering Index (Nom)	82	Dimmable	No
LLMF At End Of Nominal Lifetime (Nom)	70 %	Mechanical and Housing	
Operating and Electrical		Product Length	600 mm
Input Frequency	50 to 60 Hz		
Power (Rated) (Nom)	15.5 W		

# CorePro LEDtube MainsFit T8

## Approval and Application

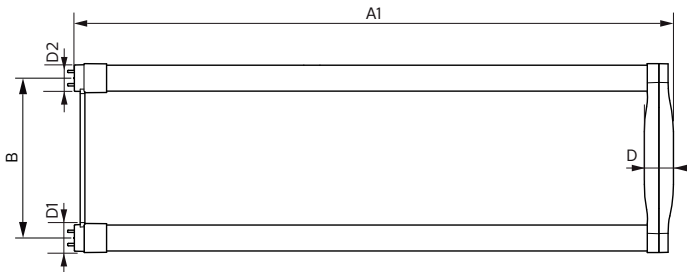
Energy Saving Product	Yes
Approbation Marks	UL certificate RoHS compliance DLC compliance
DesignLights Consortium Qualified Product List	DesignLights Consortium Qualified Product List

## Product Data

Order product name	15.5T8-6U/COR/24-840/MF21/G 10/1
--------------------	----------------------------------

EAN/UPC - Product	046677535551
Order code	535559
Numerator - Quantity Per Pack	1
Numerator - Packs per outer box	10
Material Nr. (12NC)	929001934804
Net Weight (Piece)	0.230 kg
Model Number	9290019348

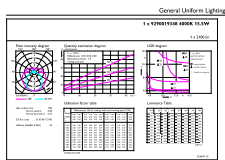
## Dimensional drawing



Product	D1	D2	B	A1	D
15.5T8-6U PRO/24-840/BB21/G 10/1 FB	25.7 mm	28.1 mm	152 mm	570 mm	27.9 mm

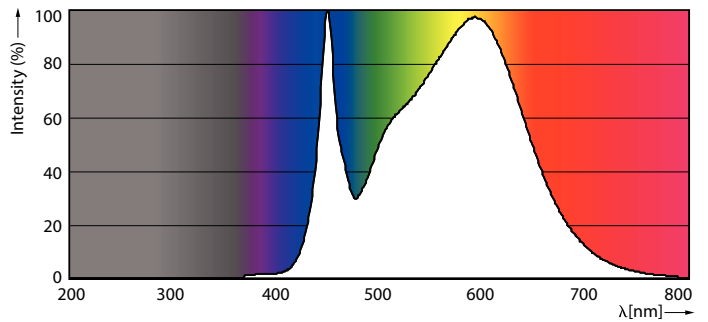
TLED MF CorePro U bent 2100lm 4000K

## Photometric data



©2019 Osram Opto Semiconductors AG Page 11

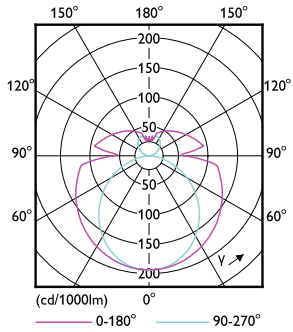
15-5W 2G13 840 4000K



15-5W 2G13

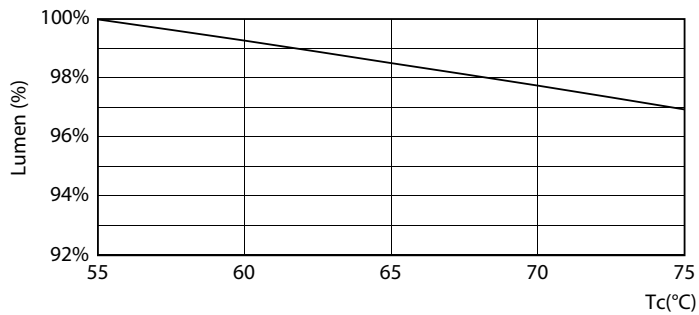
# CorePro LEDtube MainsFit T8

## Photometric data

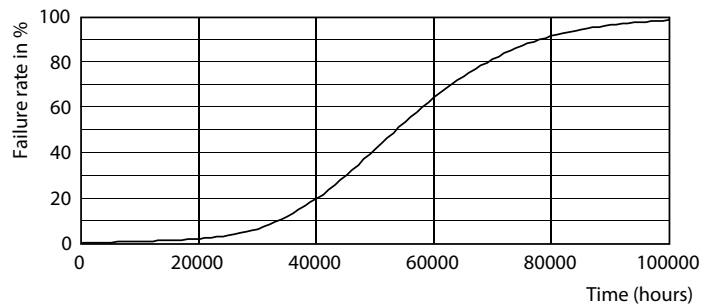


15-5W 2G13 830 3000K

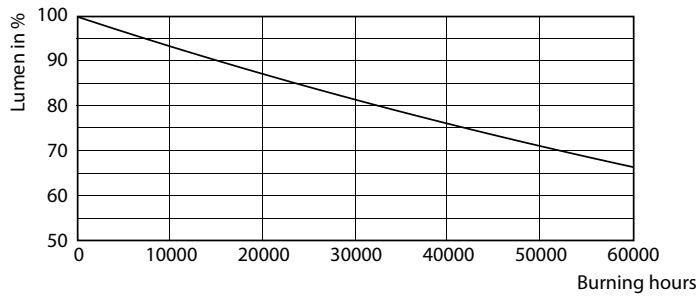
## Lifetime



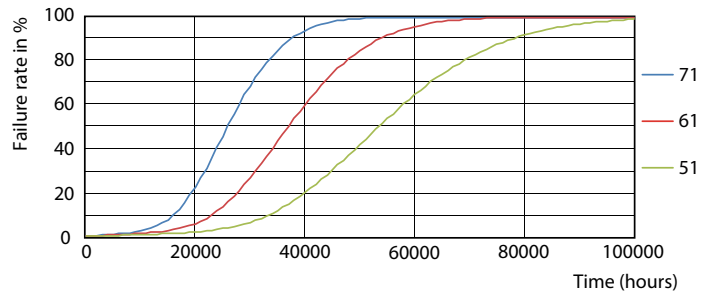
15-5W 2G13



8-5W G13



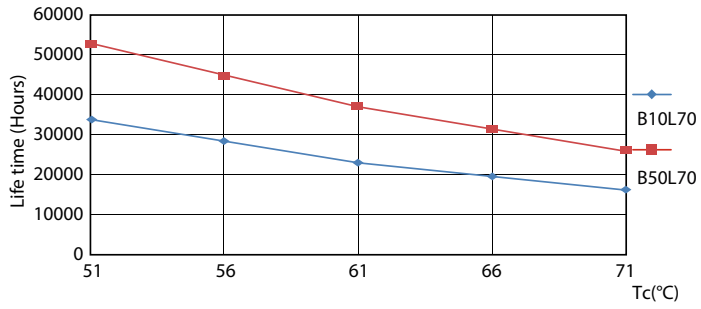
8-5W G13



15-5W 2G13

# CorePro LEDtube MainsFit T8

## Lifetime



15-5W 2G13

