



CorePro MainsFit (UL Type-B) T8

15.5T8-6U/COR/24-850/MF21/G 10/1

The CorePro MainsFit (UL Type B) lamps are designed to be the perfect retrofit solution to move from traditional fluorescent lamps to energy saving LEDs. This ballast bypass lamp has everything needed built into the lamp with proven energy savings, long life (up to 50k hours), surge suppression and industry leading safety features. All lamps in the CorePro MainsFit family are double-ended to help simplify the installation. In addition, all lamps meet the Philips standards for light quality so that end users will be in a comfortable environment regardless of the CorePro MainsFit lamp type.

Product data

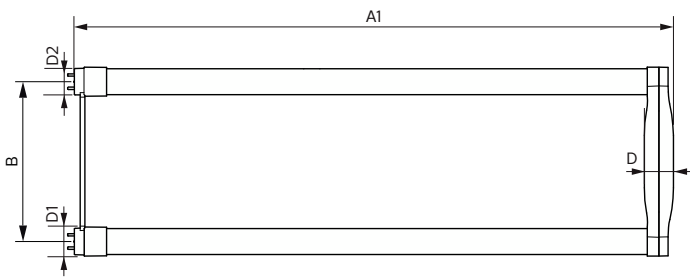
General Information		LLMF At End Of Nominal Lifetime (Nom) 70 %	
Cap-Base	2G13 [2G13]		
Nominal lifetime	50,000 hour(s)	Operating and Electrical	
Switching Cycle	50,000	Line Frequency	50 to 60 Hz
Lighting Technology	LED	Input Frequency	50 to 60 Hz
EU RoHS compliant	Yes	Power Consumption	15.5 W
Light Technical		Lamp Current (Max)	140 mA
Color Code	850 [CCT of 5000K]	Lamp Current (Min)	63 mA
Beam Angle (Nom)	180 degree(s)	Wattage Equivalent	32 W
Luminous Flux	2,100 lm	Starting Time (Nom)	0.9 s
Color Designation	Daylight	Warm-up time to 60% light	0.9 s
Correlated Color Temperature (Nom)	5000 K	Power Factor (Fraction)	0.9
Luminous Efficacy (rated) (Nom)	135.00 lm/W	Voltage (Nom)	120-277 V
Color Consistency	<5	UL Type	UL Type B
Color rendering index (CRI)	82	Temperature	
		Ambient temperature range	-4 °F to 113 °F

CorePro MainsFit (UL Type-B) T8

T-Case Maximum (Nom)	124 °F
Controls and Dimming	
Dimmable	No
Mechanical and Housing	
Bulb Finish	Frosted
Bulb Material	Glass
Product Length	23-5/8 inch
Bulb Shape	T8
Approval and Application	
Energy Saving Product	Yes
Approval Marks	UL certificate RoHS compliance DLC compliance
Energy Consumption kWh/1000 h	- kWh

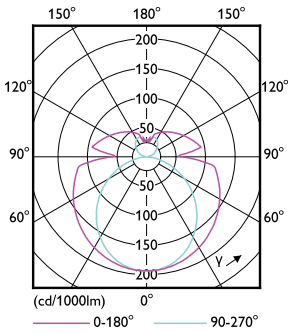
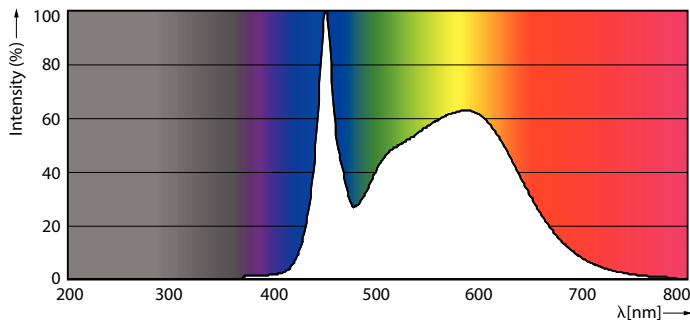
Energy Certifications	DLC Standard
Application Conditions	
can it be used in closed luminaires	Yes
Product Data	
Order product name	15.5T8-6U/COR/24-850/MF21/G 10/1
Full product name	15.5T8-6U/COR/24-850/MF21/G 10/1
Order code	535567
Material Nr. (12NC)	929001934904
Numerator - Quantity Per Pack	1
EAN/UPC - Product/Case	046677535568
Numerator - Packs per outer box	10
EAN/UPC - Case	50046677535563

Dimensional drawing



Product	D1	D2	B	A1	D
15.5T8-6U/COR/24-850/MF21/G 10/1	1-1/16 inch	1-1/8 inch	6 inch	22-1/2 inch	1-1/8 inch

Photometric data

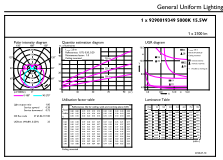


Spectral Power Distribution Colour - 15.5T8-6U/COR/24-850/MF21/G 10/1

Light Distribution Diagram - 15.5T8-6U/COR/24-850/MF21/G 10/1

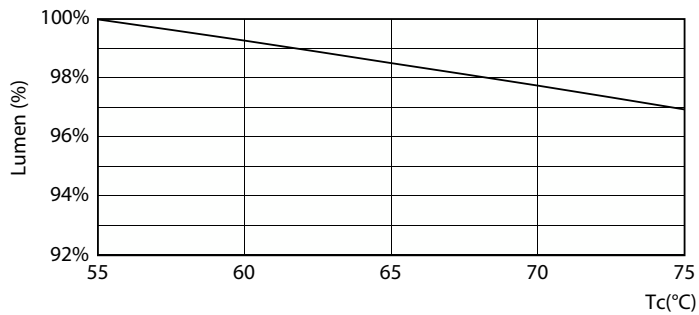
CorePro MainsFit (UL Type-B) T8

Photometric data

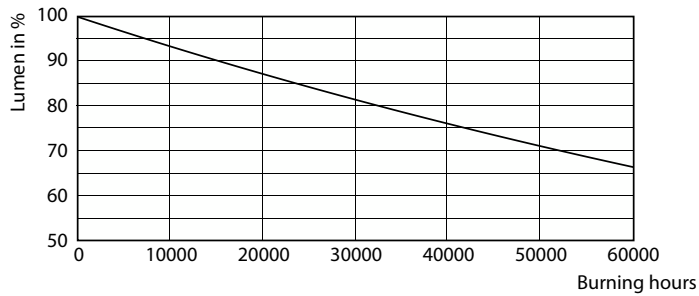


General uniform lighting - 15.5T8-6U/COR/24-850/MF21/G 10/1

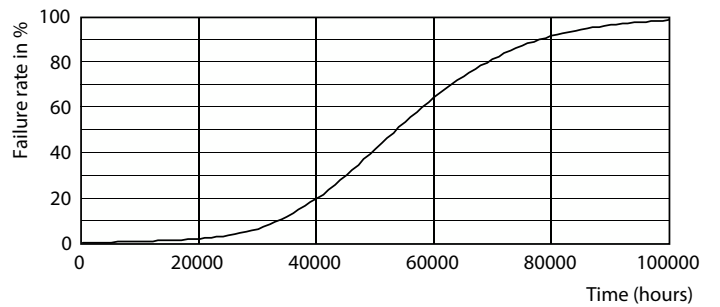
Lifetime



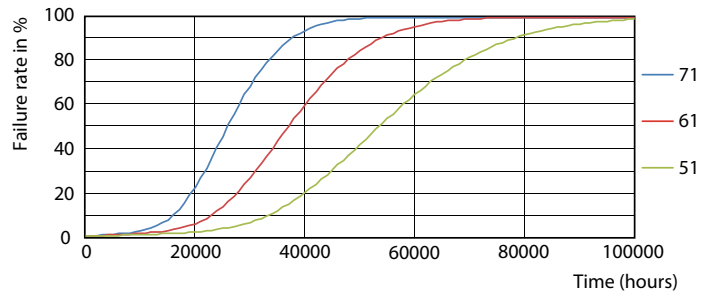
Lumen Maintenance Diagram - 15.5T8-6U/COR/24-850/MF21/G 10/1



Lumen Maintenance Diagram - 15.5T8-6U/COR/24-850/MF21/G 10/1



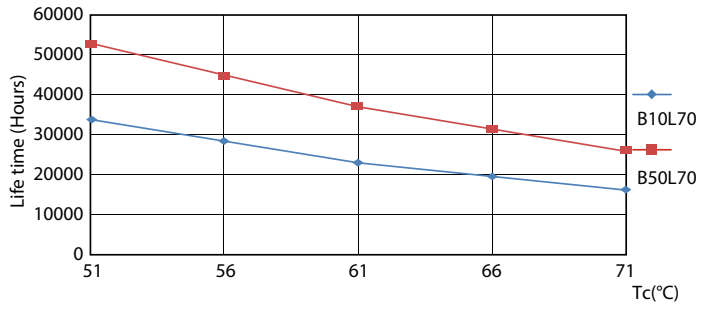
Life Expectancy Diagram - 15.5T8-6U/COR/24-850/MF21/G 10/1



Life Expectancy Diagram - 15.5T8-6U/COR/24-850/MF21/G 10/1

CorePro MainsFit (UL Type-B) T8

Lifetime



Life Expectancy Diagram - 15.5T8-6U/COR/24-850/MF21/G 10/1

