

Contractor-grade InstantFit (UL Type-A) T8

16T8/LED/48-850/IF18/G 25/1

The InstantFit LED lamps provide hassle-free installation with simple lamp-for-lamp replacements. They deliver what we promise, with at least 40% energy savings, flicker-free performance, and the life you would expect. Other lamps claim compatibility but only InstantFit (UL Type A) has been proven to work with over 350 ballasts and drivers, delivering even light output, with proven energy savings and a long average lifetime. End users will be delighted being under these comfortable and high quality InstantFit lamps with no visible flicker and optimized optics. Energy managers will enjoy the InstantFit lamps too as they can count the savings delivered by our lamps. To enjoy more energy savings, the InstantFit lamps can be paired with the Advance TLED drivers to create a Type C system.

Product data

General Information			
Cap-Base	G13 [Medium Bi-Pin Fluorescent]	Correlated Color Temperature (Nom)	5000 K
Nominal lifetime	36,000 hour(s)	Luminous Efficacy (rated) (Nom)	112.00 lm/W
Switching Cycle	50,000	Color Consistency	<6
Lighting Technology	LED	Color rendering index (CRI)	80
EU RoHS compliant	Yes	LLMF At End Of Nominal Lifetime (Nom)	70 %
Light Technical		Operating and Electrical	
Color Code	850 [CCT of 5000K]	Line Frequency	20K to 120K Hz
Beam Angle (Nom)	240 degree(s)	Input Frequency	20K to 120K Hz
Luminous Flux	1,800 lm	Power Consumption	16 W
Color Designation	Daylight	Lamp Current (Max)	330 mA
		Lamp Current (Min)	110 mA

Contractor-grade InstantFit (UL Type-A) T8

Wattage Equivalent	32 W
Starting Time (Nom)	0.5 s
Warm-up time to 60% light	0.5 s
Power Factor (Fraction)	0.9
Voltage (Nom)	120-277, 347 V
UL Type	UL Type A

Temperature

Ambient temperature range	-20 °C to 45 °C
T-Case Maximum (Nom)	35 °C

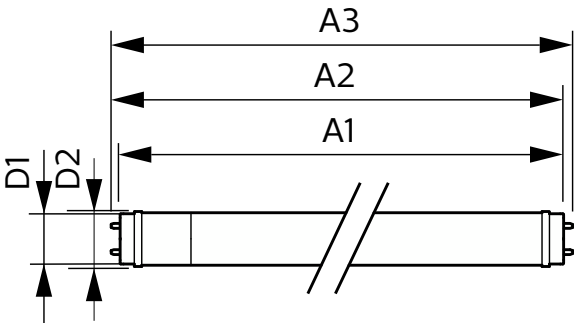
Controls and Dimming

Dimmable	No
----------	----

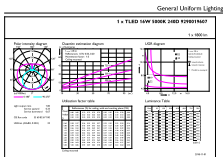
Mechanical and Housing

Bulb Finish	Frosted
Bulb Material	Glass
Product Length	1,200 mm
Bulb Shape	T8

Dimensional drawing



Photometric data



Approval and Application	
Energy Saving Product	Yes
Approval Marks	RoHS compliance UL certificate
Energy Consumption kWh/1000 h	- kWh

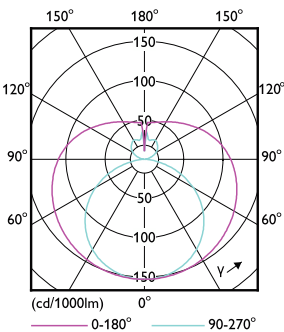
Application Conditions

can it be used in closed luminaires	Yes
-------------------------------------	-----

Product Data

Order product name	16T8/LED/48-850/IF18/G 25/1
Full product name	16T8/LED/48-850/IF18/G 25/1
Order code	542092
Material Nr. (12NC)	929001960704
Numerator - Quantity Per Pack	1
EAN/UPC - Product/Case	046677542092
Numerator - Packs per outer box	25
EAN/UPC - Case	50046677542097

Product	D1	D2	A1	A2	A3
16T8/LED/48-850/IF18/G 25/1	25.7 mm	28 mm	1,198 mm	1,205 mm	1,212 mm

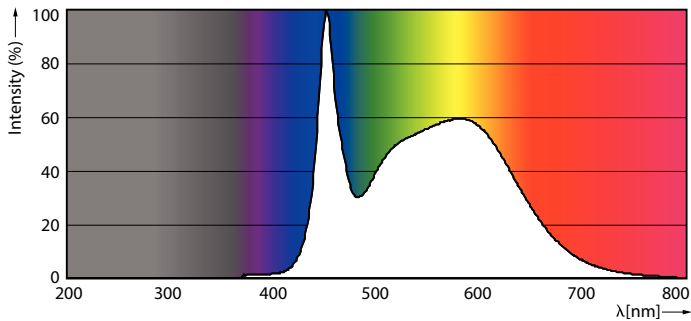


Accent Lighting Spots - 16T8/LED/48-850/IF18/G 25/1

Light Distribution Diagram - 16T8/LED/48-850/IF18/G 25/1

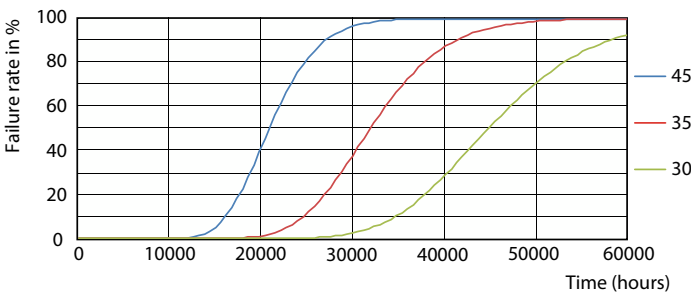
Contractor-grade InstantFit (UL Type-A) T8

Photometric data

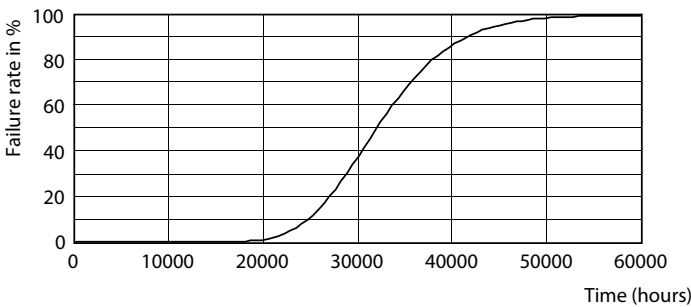


Spectral Power Distribution Colour - 16T8/LED/48-850/IF18/G 25/1

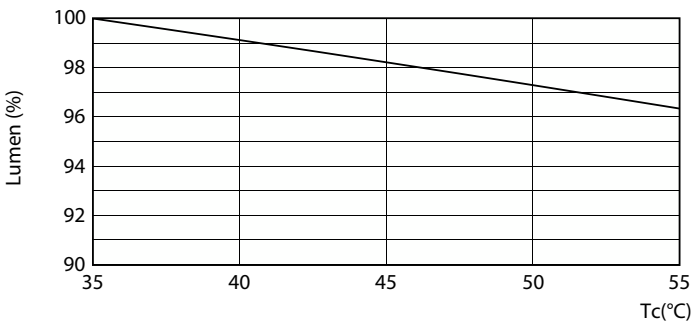
Lifetime



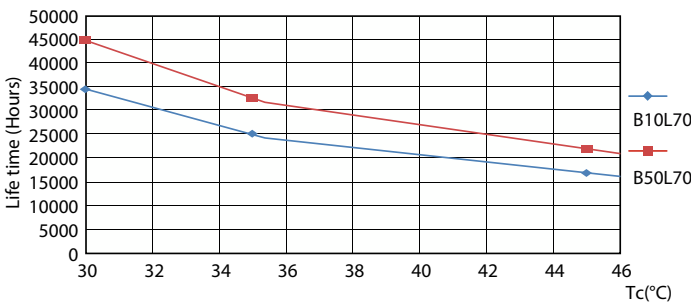
Life Expectancy Diagram - 16T8/LED/48-850/IF18/G 25/1



Life Expectancy Diagram - 16T8/LED/48-850/IF18/G 25/1



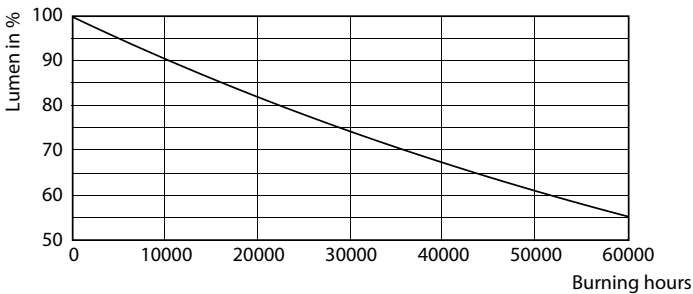
Lumen Maintenance Diagram - 16T8/LED/48-850/IF18/G 25/1



Life Expectancy Diagram - 16T8/LED/48-850/IF18/G 25/1

Contractor-grade InstantFit (UL Type-A) T8

Lifetime



Lumen Maintenance Diagram - 16T8/LED/48-850/IF18/G 25/1

