



UniversalFit (UL Type-A) T8

16T8/LED/48-850/UF18/G 10/1

The Philips UniversalFit (UL Type-A) T8 lamps are designed to operate on both electronic T8 ballasts as well as magnetic T12 ballasts. The UniversalFit is a simple plug and play installation with no need to change the ballast. Compared to the less efficient T12 lamps, the UniversalFit lamps can save up to 50% in energy costs while providing longer life (36,000 hours). These lamps also meet the Philips standards for light quality so that end users will be in comfortable environments while benefiting from lower energy usage.

Product data

| General Information | |
|---------------------------------------|---------------------------------|
| Cap-Base | G13 [Medium Bi-Pin Fluorescent] |
| Nominal lifetime | 36,000 hour(s) |
| Switching Cycle | 50,000 |
| Lighting Technology | LED |
| EU RoHS compliant | Yes |
| Light Technical | |
| Color Code | 850 [CCT of 5000K] |
| Beam Angle (Nom) | 240 degree(s) |
| Luminous Flux | 1,800 lm |
| Color Designation | Daylight |
| Correlated Color Temperature (Nom) | 5000 K |
| Luminous Efficacy (rated) (Nom) | 112.00 lm/W |
| Color Consistency | <5 |
| Color rendering index (CRI) | 80 |
| LLMF At End Of Nominal Lifetime (Nom) | 70 % |

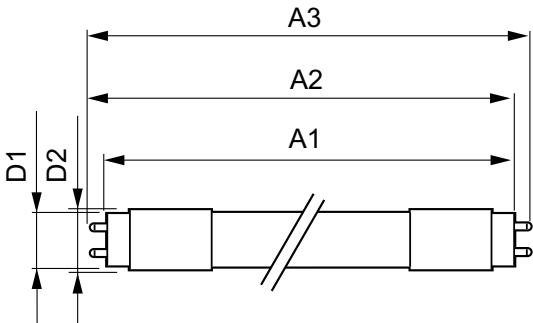
| Operating and Electrical | |
|---------------------------|-----------------|
| Line Frequency | 50-120000 Hz |
| Input Frequency | 50-120000 Hz |
| Power Consumption | 16 W |
| Lamp Current (Max) | 600 mA |
| Lamp Current (Min) | 110 mA |
| Wattage Equivalent | 32 W |
| Starting Time (Nom) | 0.5 s |
| Warm-up time to 60% light | 0.5 s |
| Power Factor (Fraction) | 0.9 |
| Voltage (Nom) | 40-330 V |
| UL Type | UL Type A |
| Temperature | |
| Ambient temperature range | -4 °F to 113 °F |
| T-Case Maximum (Nom) | 140 °F |

UniversalFit (UL Type-A) T8

| | |
|-------------------------------|--------------------------------|
| Controls and Dimming | |
| Dimmable | No |
| Mechanical and Housing | |
| Bulb Finish | Frosted |
| Bulb Material | Glass |
| Product Length | 47-1/4 inch |
| Bulb Shape | T8 |
| Approval and Application | |
| Energy Saving Product | Yes |
| Approval Marks | RoHS compliance UL certificate |
| Energy Consumption kWh/1000 h | - kWh |

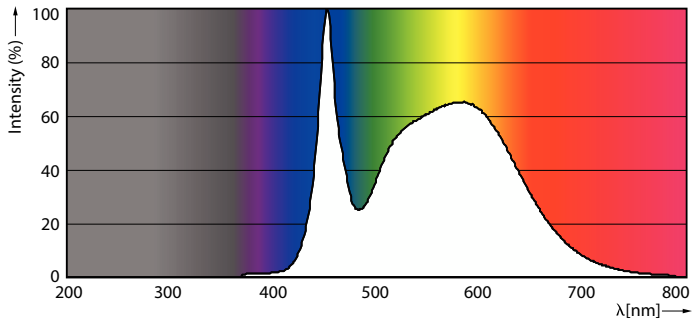
| | |
|-------------------------------------|-----------------------------|
| Application Conditions | |
| can it be used in closed luminaires | Yes |
| Product Data | |
| Order product name | 16T8/LED/48-850/UF18/G 10/1 |
| Full product name | 16T8/LED/48-850/UF18/G 10/1 |
| Order code | 539980 |
| Material Nr. (12NC) | 929001966004 |
| Numerator - Quantity Per Pack | 1 |
| EAN/UPC - Product/Case | 046677539986 |
| Numerator - Packs per outer box | 10 |
| EAN/UPC - Case | 50046677539981 |

Dimensional drawing

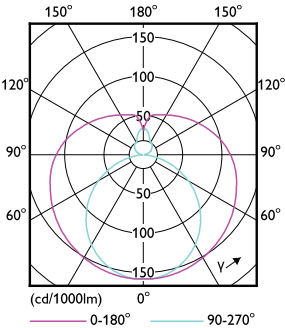


| Product | D1 | D2 | A1 | A2 | A3 |
|-----------------------------|-------------|------------|--------------|-------------|-------------|
| 16T8/LED/48-850/UF18/G 10/1 | 1-1/16 inch | 1-1/8 inch | 47-3/16 inch | 47-1/2 inch | 47-3/4 inch |

Photometric data



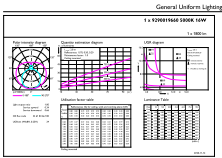
Spectral Power Distribution Colour - 16T8/LED/48-850/UF18/G 10/1



Light Distribution Diagram - 16T8/LED/48-850/UF18/G 10/1

UniversalFit (UL Type-A) T8

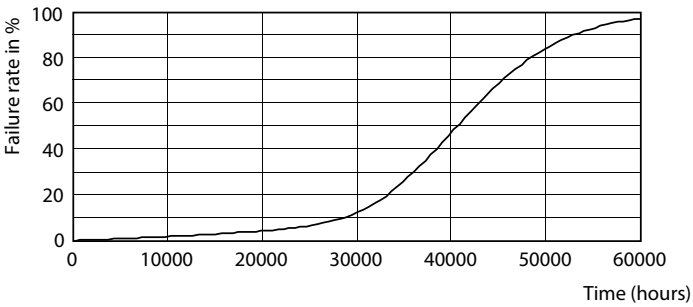
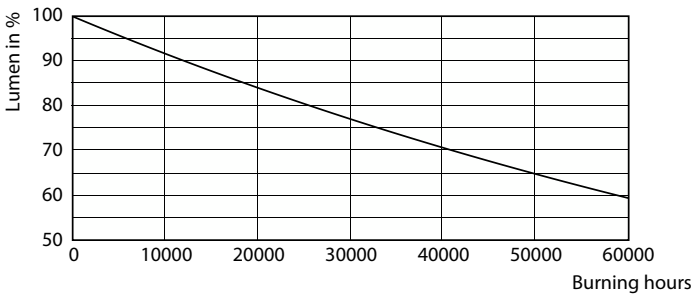
Photometric data



UniversalFit (UL Type-A) T8

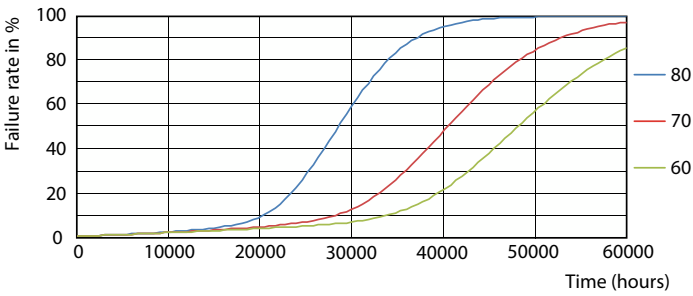
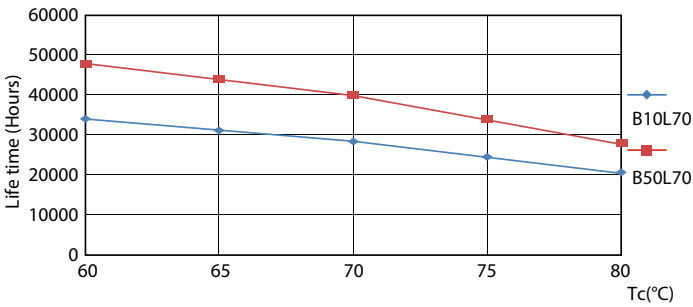
General uniform lighting - 16T8/LED/48-850/UF18/G 10/1

Lifetime



Lumen Maintenance Diagram - 16T8/LED/48-850/UF18/G 10/1

Life Expectancy Diagram - 16T8/LED/48-850/UF18/G 10/1

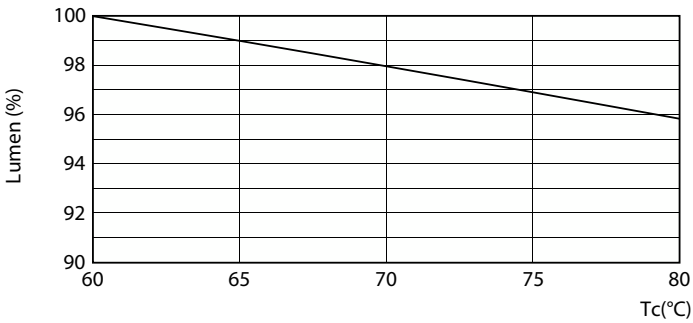


Life Expectancy Diagram - 16T8/LED/48-850/UF18/G 10/1

Life Expectancy Diagram - 16T8/LED/48-850/UF18/G 10/1

UniversalFit (UL Type-A) T8

Lifetime



Lumen Maintenance Diagram - 16T8/LED/48-850/UF18/G 10/1

