



# MasterClass InstantFit (UL Type- A) T8

## 8.5T8/MAS/36-835/IF13/P/DIM 10/1

The MasterClass InstantFit T8 lamps provide hassle-free installation with simple lamp-for-lamp replacements. They deliver what we promise, with at least 40% energy savings, flicker-free performance, and the life you would expect. Other lamps claim compatibility but only MasterClass InstantFit (UL Type A) has been proven to work with over 200 ballasts and drivers, delivering even light output, with proven energy savings and a long average lifetime. End users will be delighted being under these comfortable and high quality lamps with no visible flicker and optimized optics. Energy managers will enjoy these lamps too as they can count the savings delivered by our lamps. To enjoy more energy savings, the MasterClass InstantFit lamps can be paired with the Advance TLED drivers to create a Type C system. With available 70,000 hour life, 7-year limited warranty and a shatter-prevention polycarbonate lens, Philips MasterClass InstantFit TLED lamps deliver benefits for all.

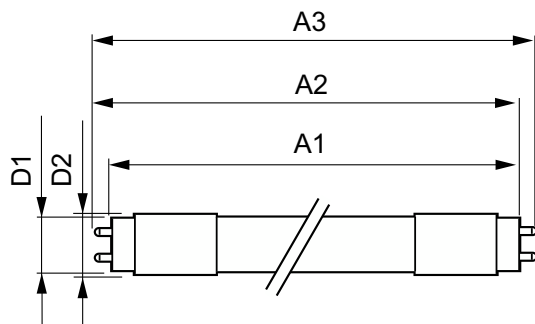
### Product data

| General Information |                                 | Beam Angle (Nom)                      |               |
|---------------------|---------------------------------|---------------------------------------|---------------|
| Cap-Base            | G13 [Medium Bi-Pin Fluorescent] |                                       | 180 degree(s) |
| Nominal lifetime    | 70,000 hour(s)                  | Luminous Flux                         | 1,350 lm      |
| Switching Cycle     | 50,000                          | Color Designation                     | White (WH)    |
| Lighting Technology | LED                             | Correlated Color Temperature (Nom)    | 3500 K        |
| EU RoHS compliant   | Yes                             | Luminous Efficacy (rated) (Nom)       | 158 lm/W      |
|                     |                                 | Color Consistency                     | <6            |
|                     |                                 | Color rendering index (CRI)           | 80            |
|                     |                                 | LLMF At End Of Nominal Lifetime (Nom) | 70 %          |
| Light Technical     |                                 |                                       |               |
| Color Code          | 835 [CCT of 3500K]              |                                       |               |

# MasterClass InstantFit (UL Type-A) T8

| Operating and Electrical  |                            |
|---------------------------|----------------------------|
| Line Frequency            | 20K to 120K Hz             |
| Input Frequency           | 20K to 120K Hz             |
| Power Consumption         | 8.5 W                      |
| Lamp Current (Max)        | 280 mA                     |
| Lamp Current (Min)        | 50 mA                      |
| Wattage Equivalent        | 25 W                       |
| Starting Time (Nom)       | 0.5 s                      |
| Warm-up time to 60% light | 0.5 s                      |
| Power Factor (Fraction)   | 0.9                        |
| Voltage (Nom)             | 120-277,347 V              |
| UL Type                   | UL Type A                  |
| Temperature               |                            |
| Ambient temperature range | -4 °F to 113 °F            |
| T-Case Maximum (Nom)      | 104 °F                     |
| Controls and Dimming      |                            |
| Dimmable                  | Only with specific dimmers |
| Mechanical and Housing    |                            |
| Bulb Finish               | Frosted                    |
| Bulb Material             | Plastic                    |
| Product Length            | 35-7/16 inch               |

## Dimensional drawing

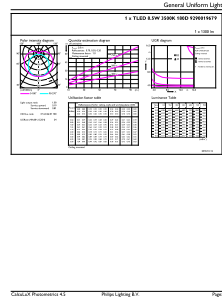
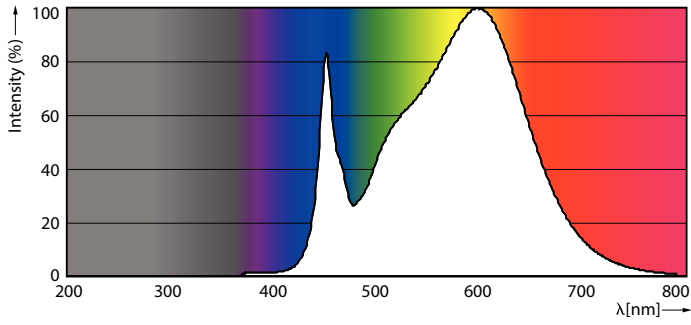


| Bulb Shape                          | T8  |
|-------------------------------------|---|
| Approval and Application            |   |
| Energy Saving Product               | Yes   |
| Approval Marks                      | RoHS compliance UL certificate DLC compliance |
| Energy Consumption kWh/1000 h       | - kWh   |
| Energy Certifications               | DLC Standard                                  |
| Application Conditions              |   |
| can it be used in closed luminaires | Yes   |
| Product Data                        |   |
| Order product name                  | 8.5T8/MAS/36-835/IF13/P/DIM 10/1              |
| Full product name                   | 8.5T8/MAS/36-835/IF13/P/DIM 10/1              |
| Order code                          | 539866  |
| Material Nr. (12NC)                 | 929001967904                                  |
| Numerator - Quantity Per Pack       | 1   |
| EAN/UPC - Product/Case              | 046677539863                                  |
| Numerator - Packs per outer box     | 10  |
| EAN/UPC - Case                      | 50046677539868                                |

| Product                          | D1          | D2          | A1           | A2          | A3          |
|----------------------------------|-------------|-------------|--------------|-------------|-------------|
| 8.5T8/MAS/36-835/IF13/P/DIM 10/1 | 1-1/16 inch | 1-1/16 inch | 35-3/16 inch | 35-1/2 inch | 35-3/4 inch |

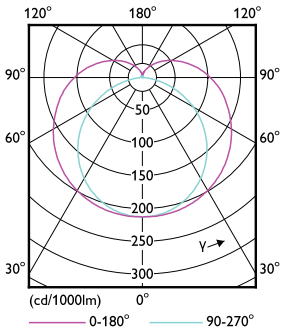
# MasterClass InstantFit (UL Type-A) T8

## Photometric data



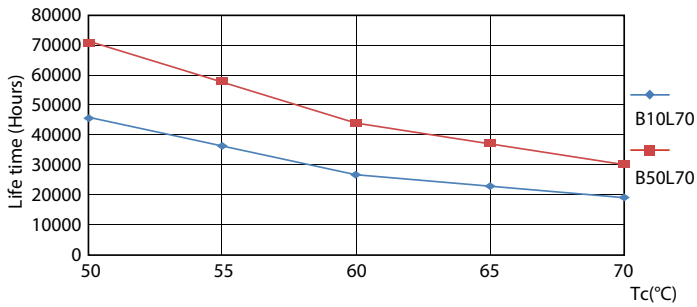
Spectral Power Distribution Colour - 8.5T8/MAS/36-835/IF13/P/DIM 10/1

General uniform lighting - 8.5T8/MAS/36-835/IF13/P/DIM 10/1

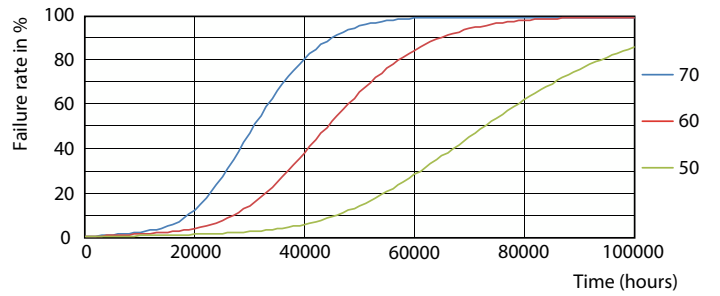


Light Distribution Diagram - 8.5T8/MAS/36-835/IF13/P/DIM 10/1

## Lifetime



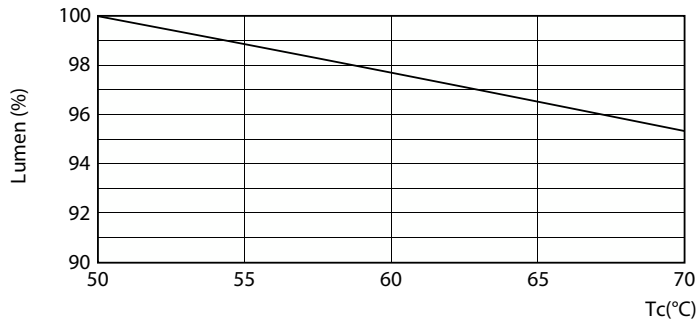
Life Expectancy Diagram - 8.5T8/MAS/36-835/IF13/P/DIM 10/1



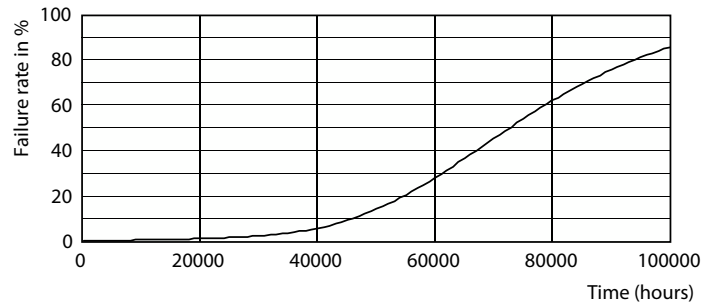
Life Expectancy Diagram - 8.5T8/MAS/36-835/IF13/P/DIM 10/1

# MasterClass InstantFit (UL Type-A) T8

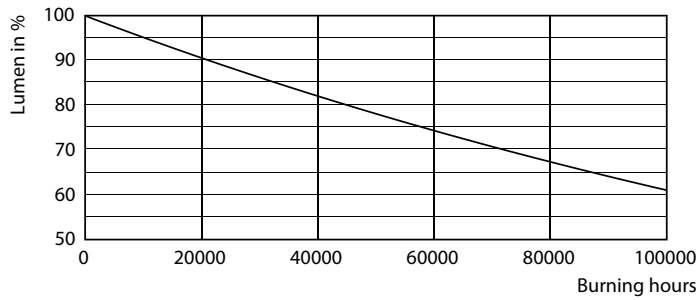
## Lifetime



Lumen Maintenance Diagram - 8.5T8/MAS/36-835/IF13/P/DIM 10/1



Life Expectancy Diagram - 8.5T8/MAS/36-835/IF13/P/DIM 10/1



Lumen Maintenance Diagram - 8.5T8/MAS/36-835/IF13/P/DIM 10/1

