



# MasterClass InstantFit (UL Type- A) T8

## 7T8/MAS/24-830/IF10/P/DIM 10/1

The MasterClass InstantFit T8 lamps provide hassle-free installation with simple lamp-for-lamp replacements. They deliver what we promise, with at least 40% energy savings, flicker-free performance, and the life you would expect. Other lamps claim compatibility but only MasterClass InstantFit (UL Type A) has been proven to work with over 200 ballasts and drivers, delivering even light output, with proven energy savings and a long average lifetime. End users will be delighted being under these comfortable and high quality lamps with no visible flicker and optimized optics. Energy managers will enjoy these lamps too as they can count the savings delivered by our lamps. To enjoy more energy savings, the MasterClass InstantFit lamps can be paired with the Advance TLED drivers to create a Type C system. With available 70,000 hour life, 7-year limited warranty and a shatter-prevention polycarbonate lens, Philips MasterClass InstantFit TLED lamps deliver benefits for all.

### Product data

General Information		Beam Angle (Nom)	
Cap-Base	G13 [Medium Bi-Pin Fluorescent]		180 degree(s)
Nominal lifetime	70,000 hour(s)	Luminous Flux	1,150 lm
Switching Cycle	50,000	Color Designation	White (WH)
Lighting Technology	LED	Correlated Color Temperature (Nom)	3000 K
EU RoHS compliant	Yes	Luminous Efficacy (rated) (Nom)	164 lm/W
		Color Consistency	<6
		Color rendering index (CRI)	80
		LLMF At End Of Nominal Lifetime (Nom)	70 %
Light Technical			
Color Code	830 [CCT of 3000K]		

# MasterClass InstantFit (UL Type-A) T8

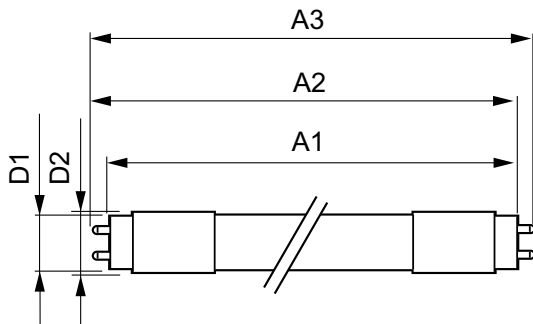
Operating and Electrical	
Line Frequency	20K to 120K Hz
Input Frequency	20K to 120K Hz
Power Consumption	7 W
Lamp Current (Max)	240 mA
Lamp Current (Min)	50 mA
Wattage Equivalent	17 W
Starting Time (Nom)	0.5 s
Warm-up time to 60% light	0.5 s
Power Factor (Fraction)	0.9
Voltage (Nom)	120-277,347 V
UL Type	UL Type A

Temperature	
Ambient temperature range	-4 °F to 113 °F
T-Case Maximum (Nom)	104 °F

Controls and Dimming	
Dimmable	Only with specific dimmers

Mechanical and Housing	
Bulb Finish	Frosted
Bulb Material	Plastic
Product Length	23-5/8 inch

## Dimensional drawing



Bulb Shape	T8
Approval and Application	
Energy Saving Product	Yes
Approval Marks	RoHS compliance UL certificate DLC compliance
Energy Consumption kWh/1000 h	- kWh
Energy Certifications	DLC Standard

Application Conditions	
can it be used in closed luminaires	Yes

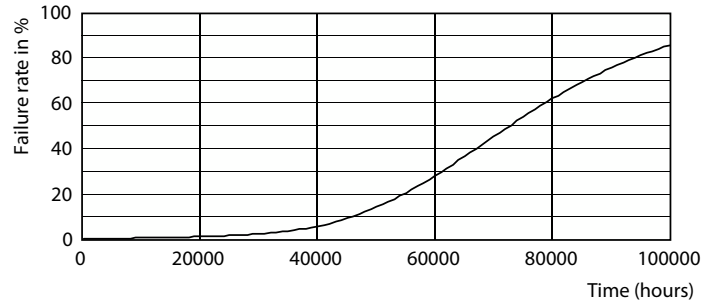
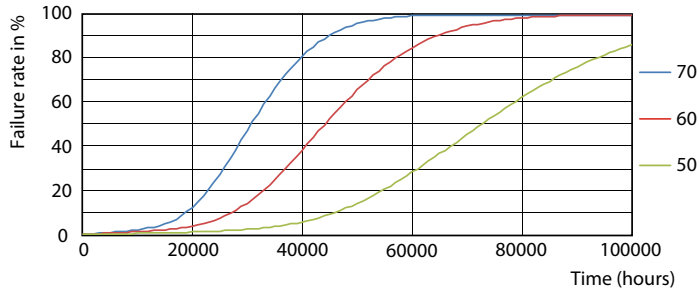
Product Data	
Order product name	7T8/MAS/24-830/IF10/P/DIM 10/1
Full product name	7T8/MAS/24-830/IF10/P/DIM 10/1
Order code	541813
Material Nr. (12NC)	929001986904
Numerator - Quantity Per Pack	1
EAN/UPC - Product/Case	046677541811
Numerator - Packs per outer box	10
EAN/UPC - Case	50046677541816

Product	D1	D2	A1	A2	A3
7T8/MAS/24-830/ IF10/P/DIM 10/1	1-1/16 inch	1-1/16 inch	23-3/16 inch	23-1/2 inch	23-3/4 inch



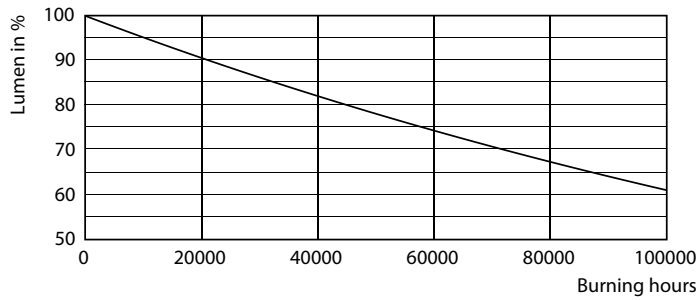
# MasterClass InstantFit (UL Type-A) T8

## Lifetime



Life Expectancy Diagram - 7T8/MAS/24-830/IF10/P/DIM 10/1

Life Expectancy Diagram - 7T8/MAS/24-830/IF10/P/DIM 10/1



Lumen Maintenance Diagram - 7T8/MAS/24-830/IF10/P/DIM 10/1

