



T8

13T8-6U/MAS/24-830/IF20/P 10/1

Our TLEDs are available in InstantFit (Type A / Type C) or MainsFit (Ballast bypass / Type B) versions. The InstantFit lamps work on a broad variety of ballasts and LED drivers. Only InstantFit has over 15,000 lamp & ballast combinations delivering even light output, energy savings and a long lifetime. Our MainsFit products feature a double-ended design, simplifying installation while a proprietary safety circuit minimizes a shock risk. Lamp sizes range from 2-foot to 8-foot and U-bend with a variety of lumen outputs.

Product data

General Information	
Base	G13 [Medium Bi-Pin Fluorescent]
Nominal Lifetime (Nom)	70000 h
Switching Cycle	50000X
B50L70	70000 h
Light Technical	
Color Code	830 [CCT of 3000K]
Beam Angle (Nom)	180 °
Initial lumen (Nom)	2000 lm
Luminous Flux (Rated) (Nom)	2000 lm
Rated Beam Angle	180 °
Correlated Color Temperature (Nom)	3000 K
Color Consistency	<6
Color Rendering Index (Nom)	80
LLMF At End Of Nominal Lifetime (Nom)	70 %
Operating and Electrical	
Input Frequency	20K to 120K Hz
Power (Rated) (Nom)	13 W

Starting Time (Nom)	0.5 s
Warm Up Time to 60% Light (Nom)	0.5 s
Power Factor (Nom)	0.9
Voltage (Nom)	120-277, 347 V
Temperature	
T-Ambient (Max)	45 °C
T-Ambient (Min)	-20 °C
T-Storage (Max)	65 °C
T-Storage (Min)	-40 °C
T-Case Maximum (Nom)	50 °C
Controls and Dimming	
Dimmable	No
Mechanical and Housing	
Product Length	600 mm
Approval and Application	
Energy Saving Product	Yes

T8

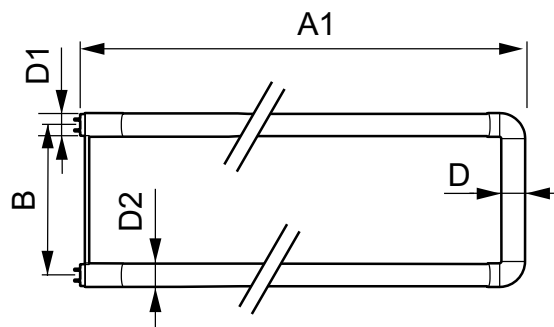
Approval Marks	RoHS compliance UL certificate DLC compliance
Energy Certifications	DLC Standard
DesignLights Consortium Qualified Product List	-

Product Data

Order product name	13T8-6U/MAS/24-830/IF20/P 10/1
EAN/UPC - Product	046677541859

Order code	541854
Numerator - Quantity Per Pack	1
Numerator - Packs per outer box	10
Material Nr. (12NC)	929001987404
Net Weight (Piece)	0.270 kg
Model Number	9290019874

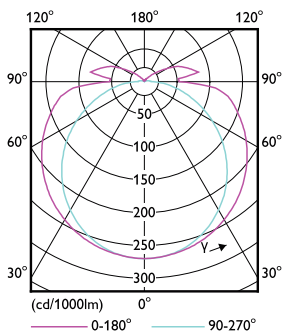
Dimensional drawing



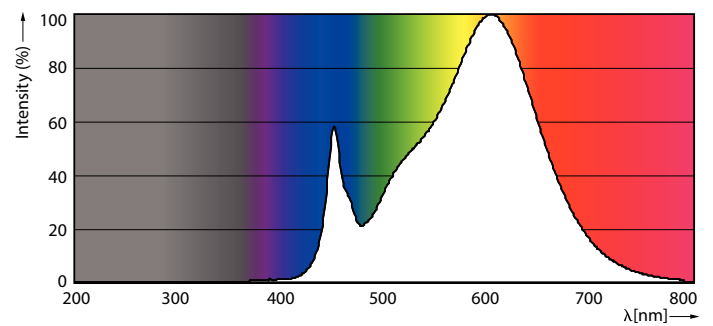
TLED IF MasterClass U bent 2000lm 3000K

Product	D1	D2	A1	A2	A3
13T8-6U/MAS/24-830/IF20/P 10/1	25.7 mm	28 mm	152 mm	570 mm	27.8 mm

Photometric data

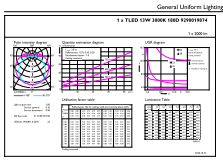


G13 3000K 2000lm



G13 3000K 2000lm

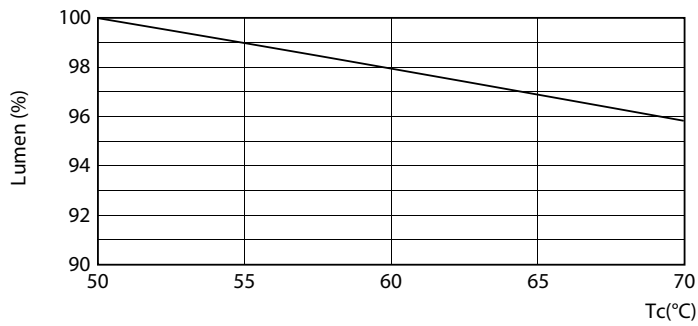
Photometric data



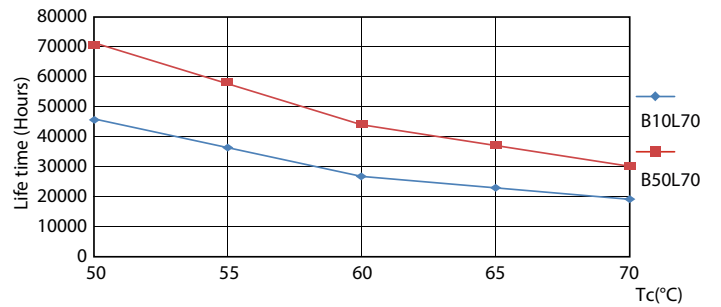
© 2019 Philips Lighting B.V. Page 11

G13 3000K 2000lm

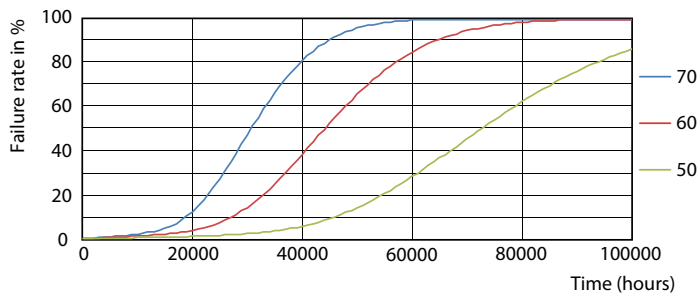
Lifetime



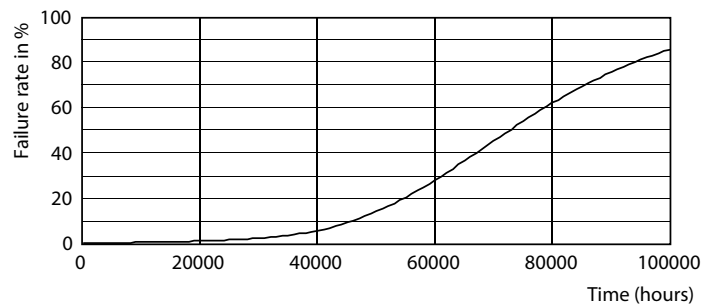
G13 3000K 2000lm



G13 3000K



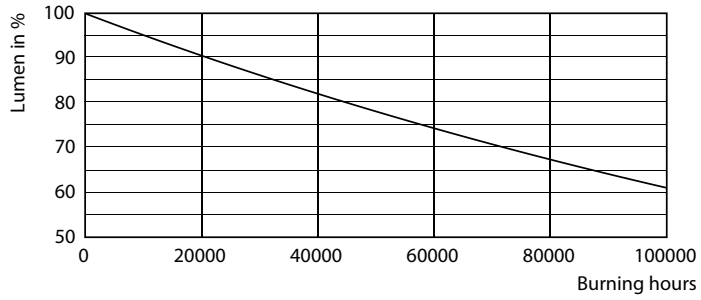
G13 3000K



G13 3000K

T8

Lifetime



G13 3000K

