



MasterClass InstantFit (UL Type- A) T8

13T8-6U/MAS/24-835/IF20/P/DIM 10/1

The MasterClass InstantFit T8 lamps provide hassle-free installation with simple lamp-for-lamp replacements. They deliver what we promise, with at least 40% energy savings, flicker-free performance, and the life you would expect. Other lamps claim compatibility but only MasterClass InstantFit (UL Type A) has been proven to work with over 200 ballasts and drivers, delivering even light output, with proven energy savings and a long average lifetime. End users will be delighted being under these comfortable and high quality lamps with no visible flicker and optimized optics. Energy managers will enjoy these lamps too as they can count the savings delivered by our lamps. To enjoy more energy savings, the MasterClass InstantFit lamps can be paired with the Advance TLED drivers to create a Type C system. With available 70,000 hour life, 7-year limited warranty and a shatter-prevention polycarbonate lens, Philips MasterClass InstantFit TLED lamps deliver benefits for all.

Product data

General Information		Beam Angle (Nom)	
Cap-Base	G13 [Medium Bi-Pin Fluorescent]		180 degree(s)
Nominal lifetime	70,000 hour(s)	Luminous Flux	2,000 lm
Switching Cycle	50,000	Color Designation	White (WH)
Lighting Technology	LED	Correlated Color Temperature (Nom)	3500 K
EU RoHS compliant	Yes	Luminous Efficacy (rated) (Nom)	153.00 lm/W
		Color Consistency	<6
		Color rendering index (CRI)	80
		LLMF At End Of Nominal Lifetime (Nom)	70 %
Light Technical			
Color Code	835 [CCT of 3500K]		

MasterClass InstantFit (UL Type-A) T8

Operating and Electrical

Line Frequency	20K to 120K Hz
Input Frequency	20K to 120K Hz
Power Consumption	13 W
Wattage Equivalent	32 W
Starting Time (Nom)	0.5 s
Warm-up time to 60% light	0.5 s
Power Factor (Fraction)	0.9
Voltage (Nom)	120-277, 347 V
UL Type	UL Type A

Temperature

Ambient temperature range	-4 °F to 113 °F
T-Case Maximum (Nom)	122 °F

Controls and Dimming

Dimmable	Yes
----------	-----

Mechanical and Housing

Bulb Finish	Frosted
Bulb Material	Plastic
Product Length	23-5/8 inch
Bulb Shape	T8

Approval and Application

Energy Saving Product	Yes
Approval Marks	RoHS compliance UL certificate DLC compliance
Energy Consumption kWh/1000 h	- kWh
Energy Certifications	DLC Standard

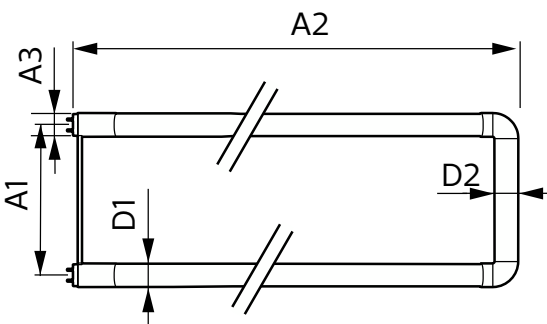
Application Conditions

can it be used in closed luminaires	Yes
-------------------------------------	-----

Product Data

Order product name	13T8-6U/MAS/24-835/IF20/P/DIM 10/1
Full product name	13T8-6U/MAS/24-835/IF20/P/DIM 10/1
Order code	541862
Material Nr. (12NC)	929001987504
Numerator - Quantity Per Pack	1
EAN/UPC - Product/Case	046677541866
Numerator - Packs per outer box	10
EAN/UPC - Case	50046677541861

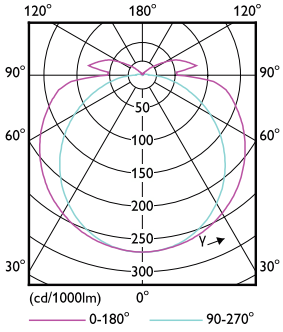
Dimensional drawing



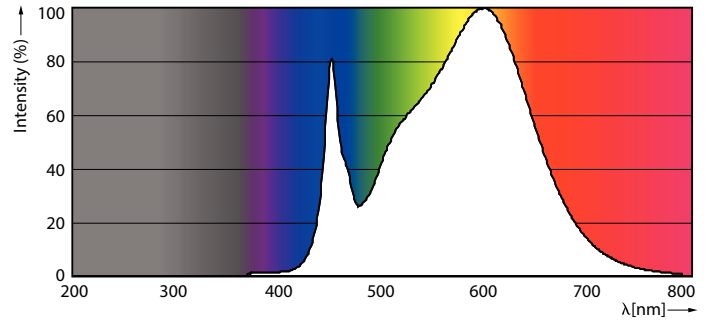
Product	D1	D2	A1	A2	A3
13T8-6U/MAS/24-835/IF20/P/DIM 10/1	1-1/16 inch	1-1/8 inch	6 inch	22-1/2 inch	1-1/8 inch

MasterClass InstantFit (UL Type-A) T8

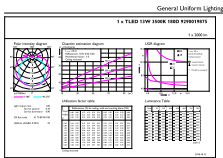
Photometric data



Light Distribution Diagram - 13T8-6U/MAS/24-835/IF20/P/DIM 10/1



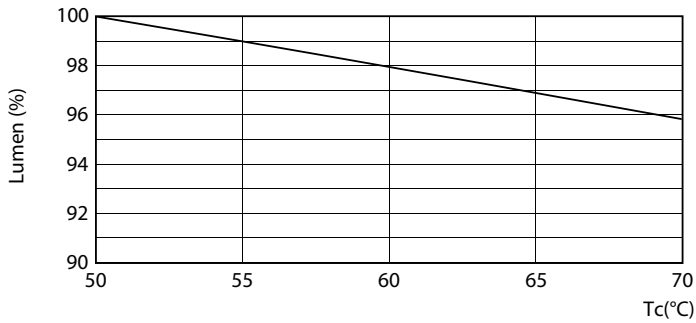
Spectral Power Distribution Colour - 13T8-6U/MAS/24-835/IF20/P/DIM 10/1



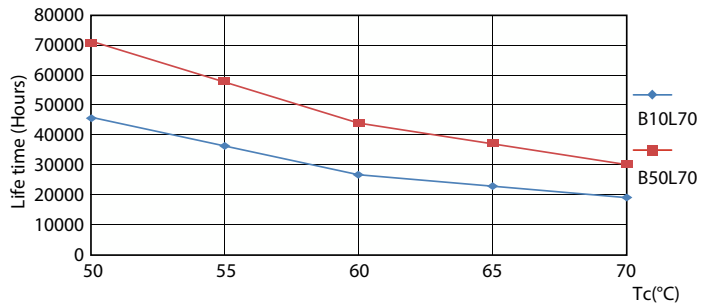
Standard Parameters (1) Page Lighting (3) Page 1/1

General uniform lighting - 13T8-6U/MAS/24-835/IF20/P/DIM 10/1

Lifetime



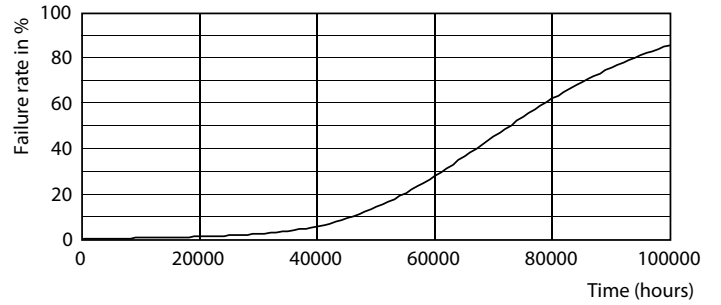
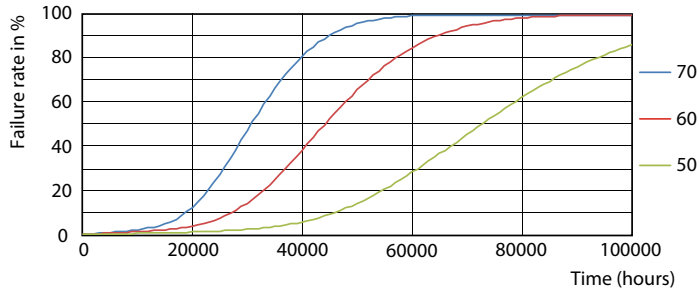
Lumen Maintenance Diagram - 13T8-6U/MAS/24-835/IF20/P/DIM 10/1



Life Expectancy Diagram - 13T8-6U/MAS/24-835/IF20/P/DIM 10/1

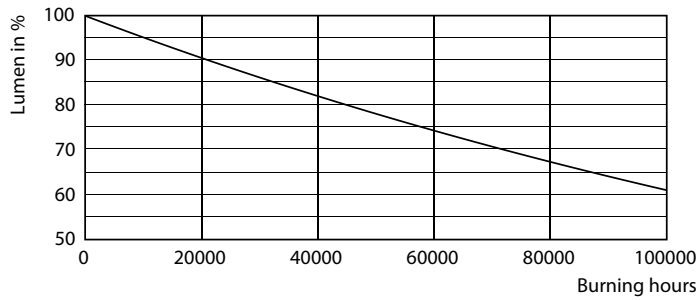
MasterClass InstantFit (UL Type-A) T8

Lifetime



Life Expectancy Diagram - 13T8-6U/MAS/24-835/IF20/P/DIM 10/1

Life Expectancy Diagram - 13T8-6U/MAS/24-835/IF20/P/DIM 10/1



Lumen Maintenance Diagram - 13T8-6U/MAS/24-835/IF20/P/DIM 10/1

