



T8

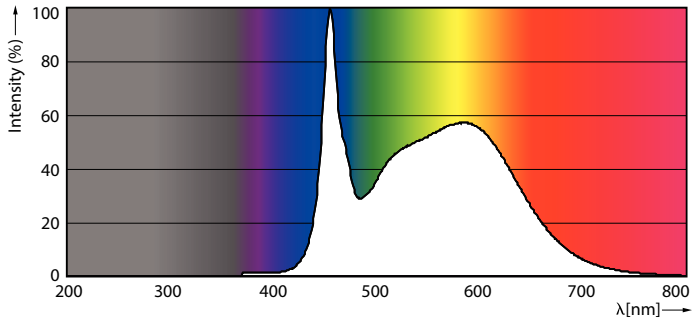
10T8/COR/48-850/IF16/G/DIM 10/1

Our TLEDs are available in InstantFit (Type A / Type C) or MainsFit (Ballast bypass / Type B) versions. The InstantFit lamps work on a broad variety of ballasts and LED drivers. Only InstantFit has over 15,000 lamp & ballast combinations delivering even light output, energy savings and a long lifetime. Our MainsFit products feature a double-ended design, simplifying installation while a proprietary safety circuit minimizes a shock risk. Lamp sizes range from 2-foot to 8-foot and U-bend with a variety of lumen outputs.

Product data

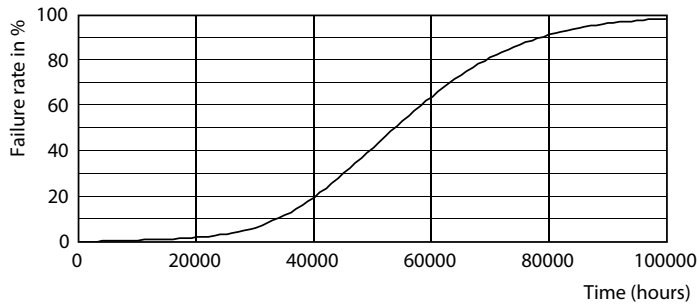
General Information		Lamp Current (Max)	
Base	G13 [Medium Bi-Pin Fluorescent]	Lamp Current (Max)	260 mA
EU RoHS compliant	Yes	Lamp Current (Min)	100 mA
Nominal Lifetime (Nom)	50000 h	Starting Time (Nom)	0.5 s
Switching Cycle	50000X	Warm Up Time to 60% Light (Nom)	0.5 s
		UL Type	Type A - works on ballast Type C - works with dedicated LED driver Type A+C - works with both ballasts and the LED driver
Light Technical		Power Factor (Nom)	0.9
Color Code	850 [CCT of 5000K]	Voltage (Nom)	120-277, 347 V
Beam Angle (Nom)	240 °	Temperature	
Initial lumen (Nom)	1600 lm	T-Ambient (Max)	45 °C
Color Designation	Daylight	T-Ambient (Min)	-20 °C
Correlated Color Temperature (Nom)	5000 K	T-Storage (Max)	65 °C
Luminous Efficacy (rated) (Nom)	160.00 lm/W	T-Storage (Min)	-40 °C
Color Consistency	<5	T-Case Maximum (Nom)	50 °C
Color Rendering Index (Nom)	82	Controls and Dimming	
LLMF At End Of Nominal Lifetime (Nom)	70 %	Dimmable	Yes
Operating and Electrical			
Input Frequency	25000-105000 Hz		
Power (Rated) (Nom)	10 W		

Photometric data

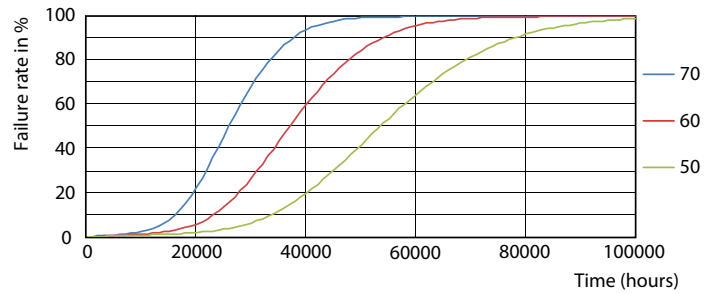


LEDtube 10W G13 850 ND

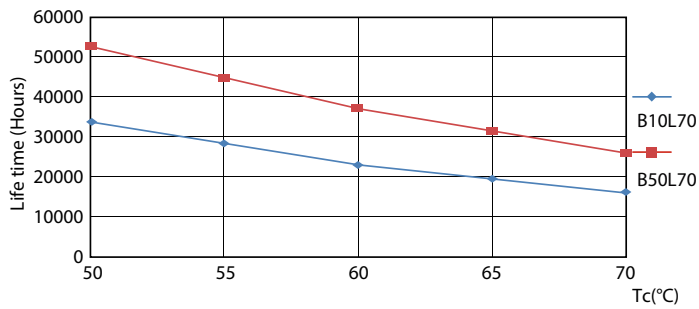
Lifetime



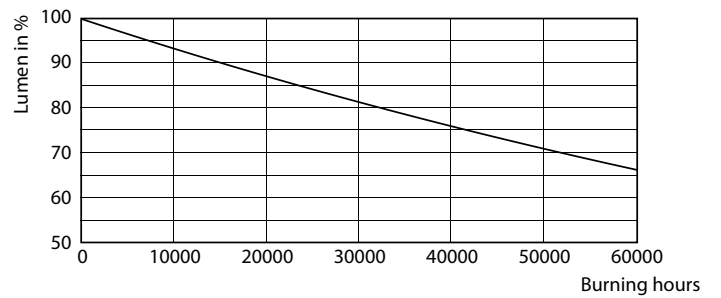
LEDtube 10W G13 850 ND



LEDtube 10W G13 850 ND



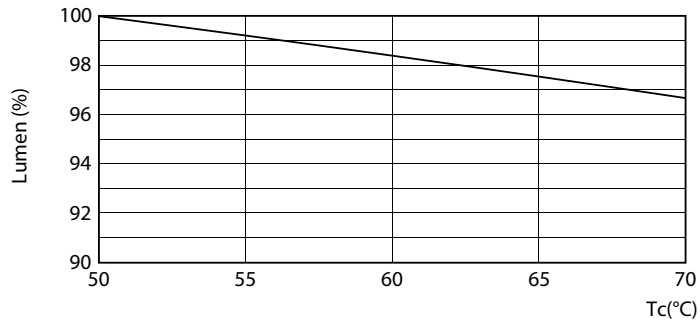
LEDtube 10W G13 850 ND



LEDtube 10W G13 850 ND

T8

Lifetime



LEDtube 10W G13 850 ND

