



T5

25T5HO/COR/46-840/MF35/G 25/1

Philips T5 LED tubes offer an affordable, energy saving retrofit solution. The T5 lamps have been engineered to withstand the test of time with a 50,000-hour lifetime and a limited 5-year warranty to back it up. The lighting performance effectively replaces conventional fluorescent T5 HO or T5 HE lamps. Available in either InstantFit (Type A or Type C) or MainsFit (Type B / Ballast bypass), Philips T5 TLEDs provide a variety of options for any application.

Product data

General information	
Base	G5 [G5]
EU RoHS compliant	Yes
Nominal Lifetime (Nom)	50000 h
Switching Cycle	50000X
Light technical	
Color Code	841 [CCT of 4100K (841)]
Beam Angle (Nom)	200 °
Initial lumen (Nom)	3500 lm
Color Designation	Cool White (CW)
Correlated Color Temperature (Nom)	4000 K
Luminous Efficacy (rated) (Nom)	140.00 lm/W
Color Consistency	<6
Color Rendering Index (Nom)	80
LLMF At End Of Nominal Lifetime (Nom)	70 %
Operating and electrical	
Input Frequency	50 to 60 Hz
Power (Rated) (Nom)	25 W
Lamp Current (Max)	210 mA

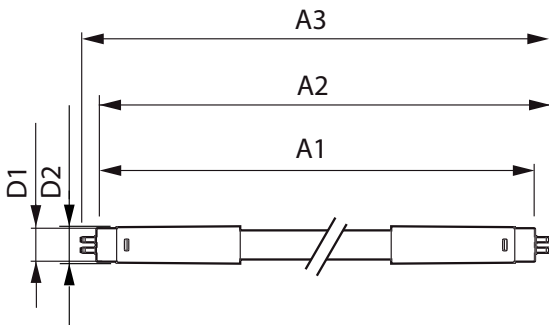
Lamp Current (Min)	95 mA
Wattage Equivalent	54 W
Starting Time (Nom)	0.45 s
Warm Up Time to 60% Light (Nom)	0.5 s
UL Type	Type B - bypass the ballast
Power Factor (Nom)	0.9
Voltage (Nom)	120-277 V
Temperature	
T-Ambient (Max)	45 °C
T-Ambient (Min)	-20 °C
T-Storage (Max)	65 °C
T-Storage (Min)	-40 °C
T-Case Maximum (Nom)	75 °C
Controls and dimming	
Dimmable	No
Mechanical and housing	
Bulb Finish	Frosted
Bulb Material	Glass

T5

Product Length	48 in
Bulb Shape	Tube, double-ended
Approval and application	
Energy Saving Product	Yes
Approbation Marks	RoHS compliance UL certificate DLC compliance
Energy Consumption kWh/1000 h	- kWh
Product data	
Order product name	25T5HO/COR/46-840/MF35/G 25/1

EAN/UPC - Product	046677542061
Order code	542068
Numerator - Quantity Per Pack	1
Numerator - Packs per outer box	25
Material Nr. (12NC)	929001992604
Net Weight (Piece)	0.215 kg
Model Number	9290019926

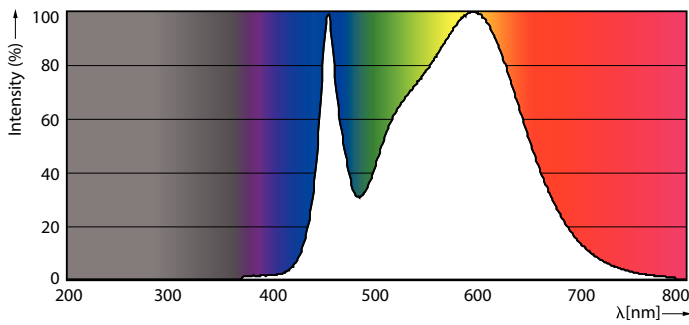
Dimensional drawing



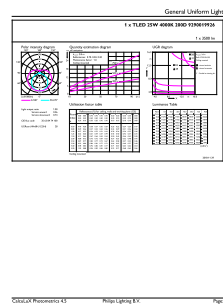
25T5HO/COR/46-840/MF35/G 25/1

Product	D1	D2	A1	A2	A3
25T5HO/COR/46-840/MF35/G 25/1	15.3 mm	18.6 mm	1147.8 mm	1154.9 mm	1162 mm

Photometric data



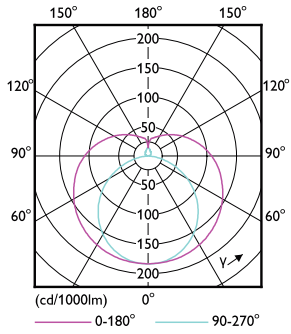
LEDtube G5 4000K



LEDtube G5 4000K

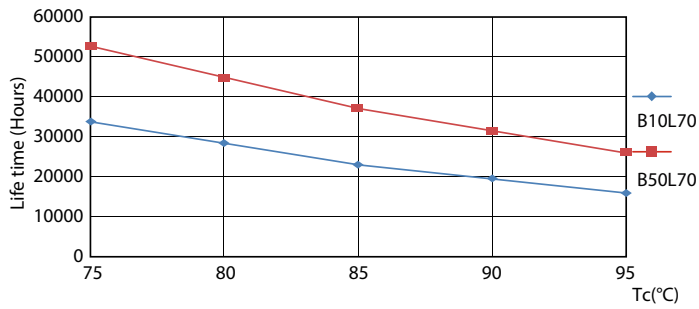
T5

Photometric data

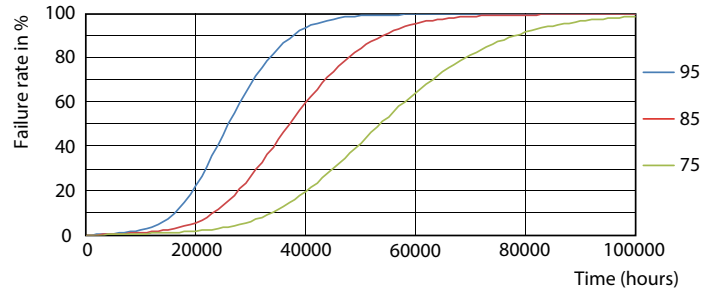


LEDtube G5 25W

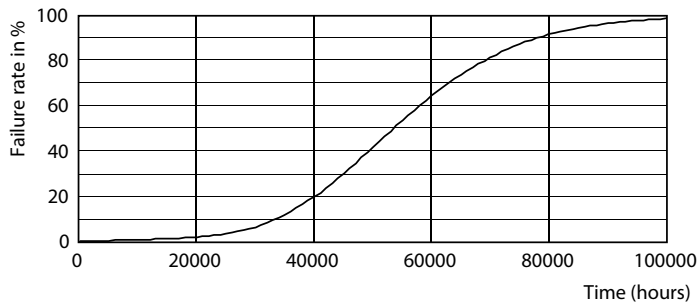
Lifetime



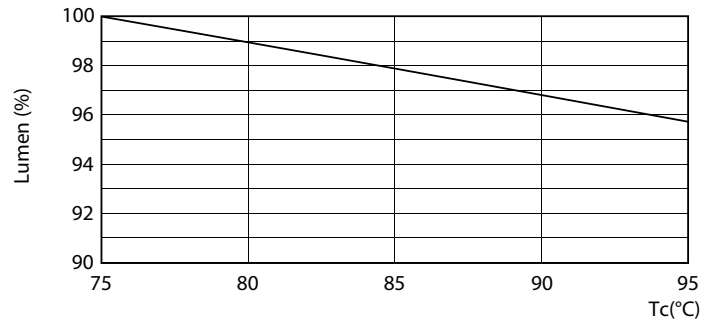
LEDtube G5 25W LifetimeVsTc



LEDtube G5 25W FailureRate



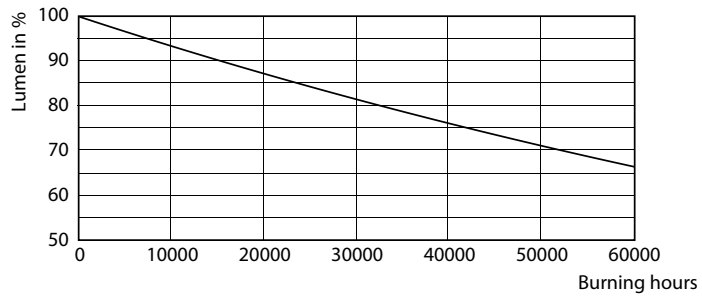
LEDtube G5 25W



LEDtube G5 25W LumenVsTc

T5

Lifetime



LEDtube G5 25W

