



# T8

## 44T8HO/COR/96-840/MF54/G/R17d 10/1

Our TLEDs are available in InstantFit (Type A / Type C) or MainsFit (Ballast bypass / Type B) versions. The InstantFit lamps work on a broad variety of ballasts and LED drivers. Only InstantFit has over 15,000 lamp & ballast combinations delivering even light output, energy savings and a long lifetime. Our MainsFit products feature a double-ended design, simplifying installation while a proprietary safety circuit minimizes a shock risk. Lamp sizes range from 2-foot to 8-foot and U-bend with a variety of lumen outputs.

### Product data

General Information	
Base	R17D [ R17d (RDC)]
EU RoHS compliant	Yes
Nominal Lifetime (Nom)	50000 h
Switching Cycle	50000X
Light Technical	
Color Code	841 [ CCT of 4100K (841)]
Beam Angle (Nom)	240 °
Initial lumen (Nom)	5400 lm
Correlated Color Temperature (Nom)	4000 K
Color Consistency	<6
Color Rendering Index (Nom)	82
LLMF At End Of Nominal Lifetime (Nom)	70 %
Operating and Electrical	
Input Frequency	50 to 60 Hz
Power (Rated) (Nom)	44 W
Lamp Current (Max)	375 mA
Lamp Current (Min)	168 mA

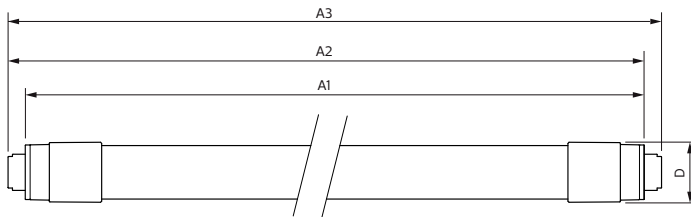
Starting Time (Nom)	0.5 s
Warm Up Time to 60% Light (Nom)	0.5 s
Power Factor (Nom)	0.9
Voltage (Nom)	120-277 V
Temperature	
T-Ambient (Max)	45 °C
T-Ambient (Min)	-20 °C
T-Storage (Max)	65 °C
T-Storage (Min)	-40 °C
T-Case Maximum (Nom)	55 °C
Controls and Dimming	
Dimmable	No
Mechanical and Housing	
Product Length	2400 mm
Approval and Application	
Energy Saving Product	Yes

# T8

<b>Approbation Marks</b>	RoHS compliance UL certificate DLC compliance
<b>Product Data</b>	
<b>Order product name</b>	44T8HO/COR/96-840/MF54/G/R17d 10/1
<b>EAN/UPC - Product</b>	046677545284
<b>Order code</b>	545285

<b>Numerator - Quantity Per Pack</b>	1
<b>Numerator - Packs per outer box</b>	10
<b>Material Nr. (12NC)</b>	929002014204
<b>Net Weight (Piece)</b>	0.740 kg
<b>Model Number</b>	9290020142

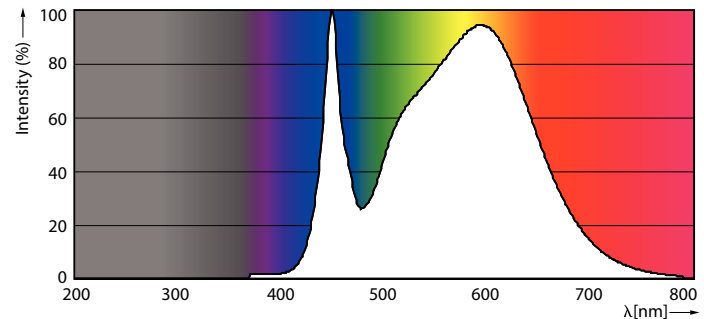
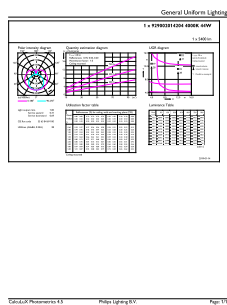
## Dimensional drawing



Product	D1	D2	A1	A2	A3
44T8HO/COR/96-840/MF54/G/R17d 10/1	28 mm	27.8 mm	2369.8 mm	2378.7 mm	2387.8 mm

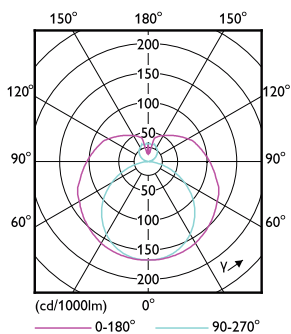
**TLED MF CorePro 8ft 5400lm R17d 4000K**

## Photometric data



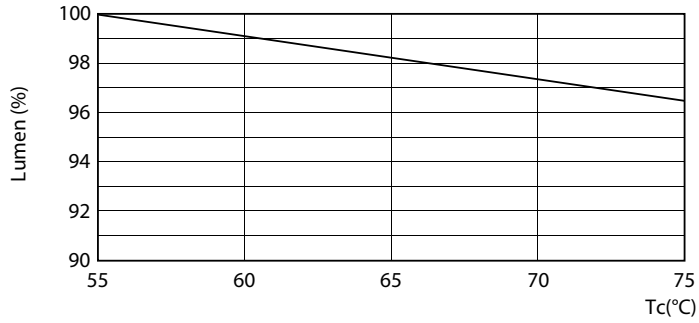
**LEDtube R17D 4000K 240D**

**LEDtube FA8 4000K 240D**

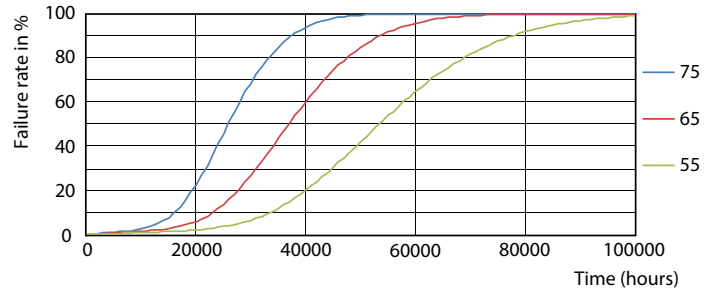


**LEDtube FA8 4000K 240D**

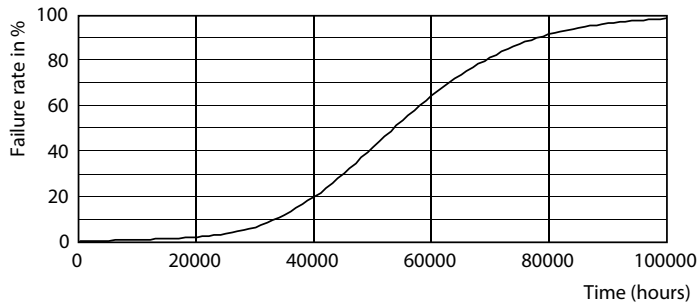
Lifetime



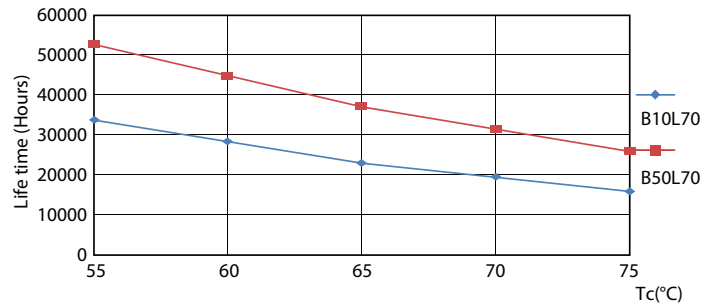
LEDtube R17D 4000K 240D LumenVsTc



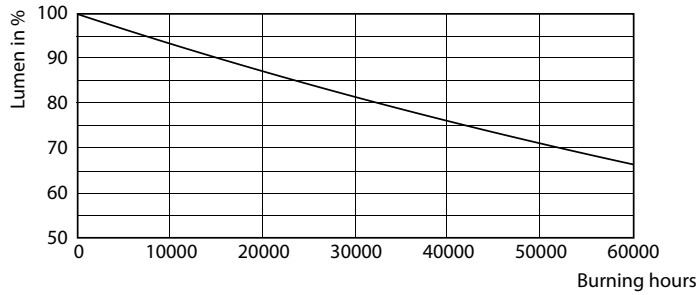
LEDtube R17D 4000K 240D FailureRate



LEDtube FA8 4000K 240D



LEDtube R17D 4000K 240D LifetimeVsTc



LEDtube FA8 4000K 240D

