



T8

44T8HO/COR/96-850/MF54/G/R17d 10/1

Our TLEDs are available in InstantFit (Type A / Type C) or MainsFit (Ballast bypass / Type B) versions. The InstantFit lamps work on a broad variety of ballasts and LED drivers. Only InstantFit has over 15,000 lamp & ballast combinations delivering even light output, energy savings and a long lifetime. Our MainsFit products feature a double-ended design, simplifying installation while a proprietary safety circuit minimizes a shock risk. Lamp sizes range from 2-foot to 8-foot and U-bend with a variety of lumen outputs.

Product data

| General Information | |
|---------------------------------------|---------------------|
| Cap-Base | R17D [R17d (RDC)] |
| Nominal Lifetime (Nom) | 50000 h |
| Switching Cycle | 50000X |
| B50L70 | 50000 h |
| Light Technical | |
| Color Code | 850 [CCT of 5000K] |
| Beam Angle (Nom) | 240 ° |
| Luminous Flux (Nom) | 5400 lm |
| Luminous Flux (Rated) (Nom) | 5400 lm |
| Rated Beam Angle | 240 ° |
| Correlated Color Temperature (Nom) | 5000 K |
| Color Consistency | <5 |
| Color Rendering Index (Nom) | 82 |
| LLMF At End Of Nominal Lifetime (Nom) | 70 % |
| Operating and Electrical | |
| Input Frequency | 50 to 60 Hz |
| Power (Rated) (Nom) | 44 W |

| | |
|---------------------------------|-----------|
| Lamp Current (Max) | 375 mA |
| Lamp Current (Min) | 168 mA |
| Starting Time (Nom) | 0.5 s |
| Warm Up Time to 60% Light (Nom) | 0.5 s |
| Power Factor (Nom) | 0.9 |
| Voltage (Nom) | 120-277 V |

| Temperature | |
|----------------------|--------|
| T-Ambient (Max) | 45 °C |
| T-Ambient (Min) | -20 °C |
| T-Storage (Max) | 65 °C |
| T-Storage (Min) | -40 °C |
| T-Case Maximum (Nom) | 55 °C |

| Controls and Dimming | |
|----------------------|----|
| Dimmable | No |

| Mechanical and Housing | |
|------------------------|---------|
| Product Length | 2400 mm |

T8

Approval and Application

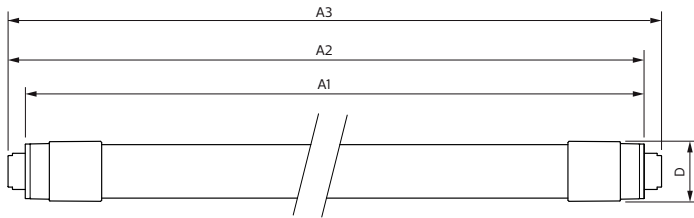
| | |
|-----------------------|---|
| Energy Saving Product | Yes |
| Approval Marks | RoHS compliance UL certificate DLC compliance |

Product Data

| | |
|--------------------|------------------------------------|
| Order product name | 44T8HO/COR/96-850/MF54/G/R17d 10/1 |
| EAN/UPC - Product | 046677545291 |

| | |
|---------------------------------|--------------|
| Order code | 929002014304 |
| Numerator - Quantity Per Pack | 1 |
| Numerator - Packs per outer box | 10 |
| Material Nr. (12NC) | 929002014304 |
| Net Weight (Piece) | 0.740 kg |

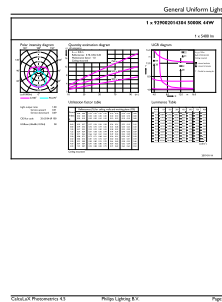
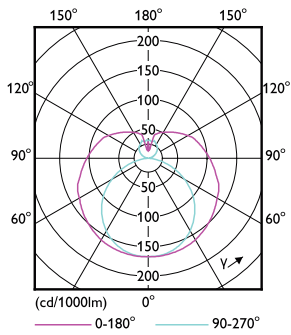
Dimensional drawing



| Product | D1 | D2 | A1 | A2 | A3 |
|--|-------|---------|-----------|-----------|-----------|
| 44T8HO/COR/96-850/ MF54/G/R17d 10/1 | 28 mm | 27.8 mm | 2369.8 mm | 2378.7 mm | 2387.8 mm |

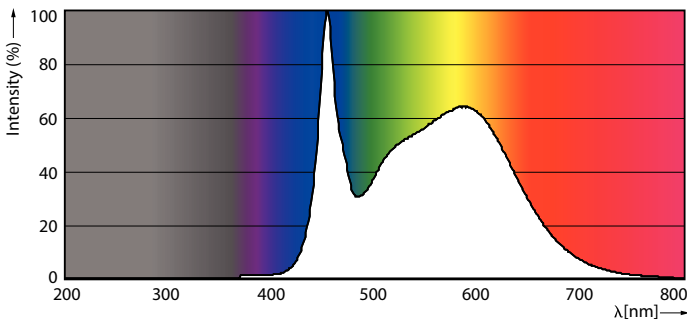
TLED MF CorePro 8ft 5400lm R17d 5000K

Photometric data



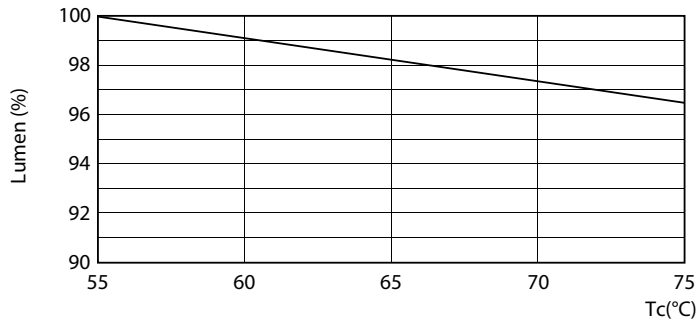
LEDtube FA8 4000K 240D

LEDtube R17D 5000K 240D

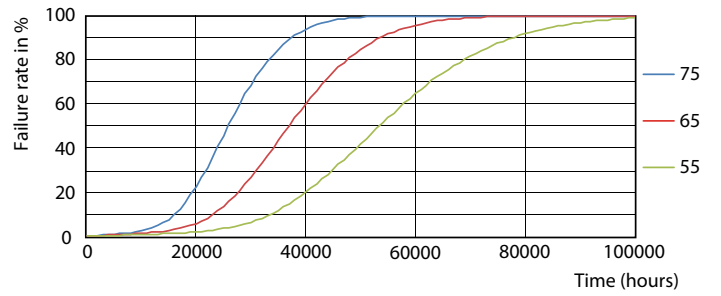


LEDtube FA8 5000K 240D

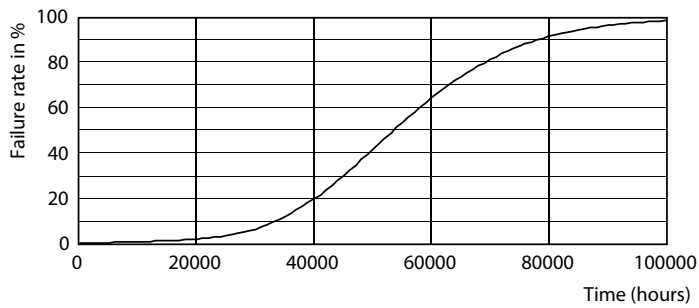
Lifetime



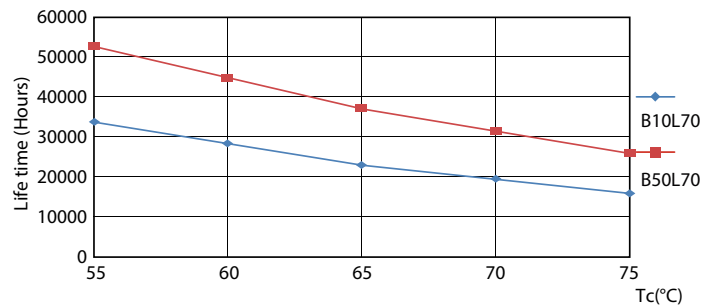
LEDtube R17D 4000K 240D LumenVsTc



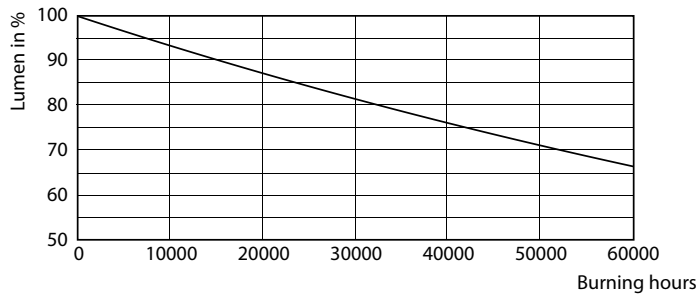
LEDtube R17D 4000K 240D FailureRate



LEDtube FA8 4000K 240D



LEDtube R17D 4000K 240D LifetimeVsTc



LEDtube FA8 4000K 240D

