

# T8

## 9.5T8/MAS/48-835/IF15/P/DIM 10/1

Our TLEDs are available in InstantFit (Type A / Type C) or MainsFit (Ballast bypass / Type B) versions. The InstantFit lamps work on a broad variety of ballasts and LED drivers. Only InstantFit has over 15,000 lamp & ballast combinations delivering even light output, energy savings and a long lifetime. Our MainsFit products feature a double-ended design, simplifying installation while a proprietary safety circuit minimizes a shock risk. Lamp sizes range from 2-foot to 8-foot and U-bend with a variety of lumen outputs.

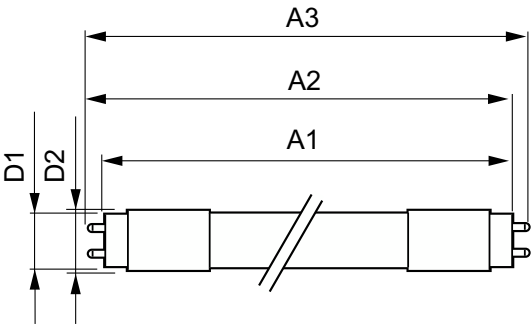
### Product data

<b>General Information</b>		<b>Input Frequency</b>	
Cap-Base	G13 [Medium Bi-Pin Fluorescent]	Power Consumption	9.5 W
Nominal lifetime	70,000 hour(s)	Starting Time (Nom)	0.5 s
Switching Cycle	50,000	Warm-up time to 60% light	0.5 s
Lighting Technology	LED	Power Factor (Fraction)	0.9
EU RoHS compliant	Yes	Voltage (Nom)	120-277, 347 V
<b>Light Technical</b>		UL Type	Type A - works on ballast
Color Code	835 [CCT of 3500K]	<b>Temperature</b>	
Beam Angle (Nom)	180 degree(s)	Ambient temperature range	-4 °F to 131 °F
Luminous Flux	1,500 lm	T-Case Maximum (Nom)	131 °F
Color Designation	White (WH)	<b>Controls and Dimming</b>	
Correlated Color Temperature (Nom)	3500 K	Dimmable	Yes
Luminous Efficacy (rated) (Nom)	157.00 lm/W	<b>Mechanical and Housing</b>	
Color Consistency	<6	Bulb Finish	Frosted
Color rendering index (CRI)	80	Bulb Material	Plastic
LLMF At End Of Nominal Lifetime (Nom)	70 %	Product Length	47-1/4 inch
<b>Operating and Electrical</b>			
Line Frequency	50 to 60 Hz		

Bulb Shape	Tube, double-ended
Approval and Application	
Energy Saving Product	Yes
Approval Marks	RoHS compliance UL certificate DLC compliance
Energy Consumption kWh/1000 h	- kWh
Product Data	
Order product name	9.5T8/MAS/48-835/IF15/P/DIM 10/1

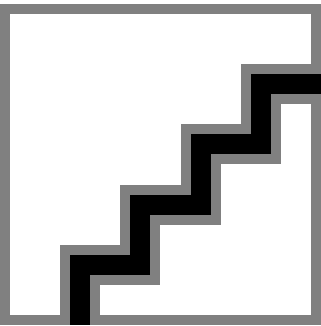
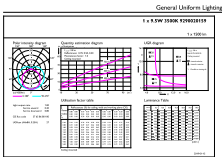
Full product name	9.5T8/MAS/48-835/IF15/P/DIM 10/1
Order code	473982
Material Nr. (12NC)	929002015904
Numerator - Quantity Per Pack	1
EAN/UPC - Product/Case	046677473983
Numerator - Packs per outer box	10
EAN/UPC - Case	50046677473988

Dimensional drawing



Product	D1	D2	A1	A2	A3
9.5T8/MAS/48-835/ IF15/P/DIM 10/1	1-1/16 inch	1-1/8 inch	47-3/16 inch	47-1/2 inch	47-3/4 inch

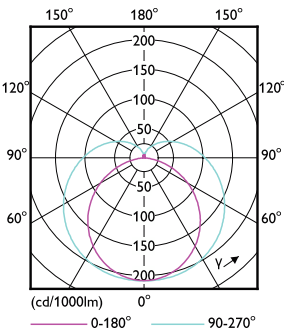
Photometric data



General uniform lighting - 9.5T8/MAS/48-835/IF15/P/DIM 10/1

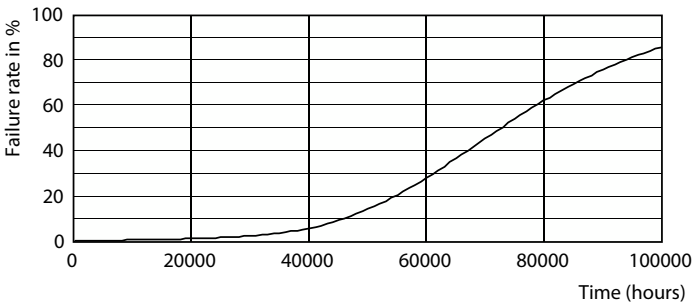
Spectral Power Distribution Colour - 9.5T8/MAS/48-835/IF15/P/DIM 10/1

Photometric data

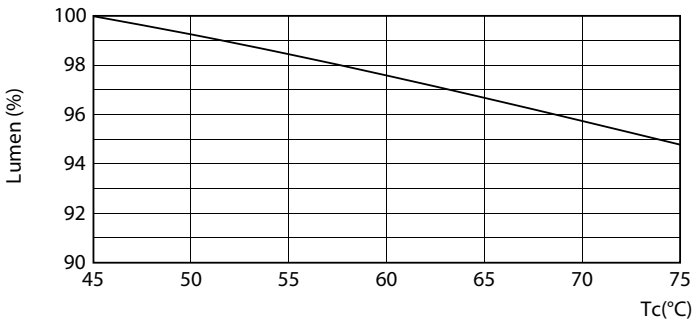


Light Distribution Diagram - 9.5T8/MAS/48-835/IF15/P/DIM 10/1

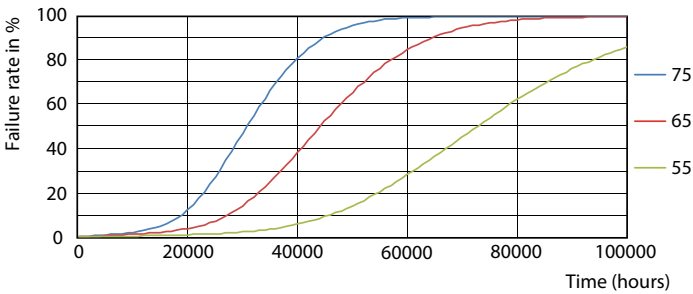
Lifetime



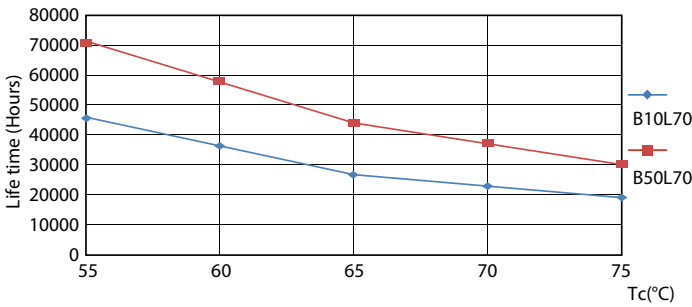
Life Expectancy Diagram - 9.5T8/MAS/48-835/IF15/P/DIM 10/1



Lumen Maintenance Diagram - 9.5T8/MAS/48-835/IF15/P/DIM 10/1



Life Expectancy Diagram - 9.5T8/MAS/48-835/IF15/P/DIM 10/1



Life Expectancy Diagram - 9.5T8/MAS/48-835/IF15/P/DIM 10/1

Lifetime



Lumen Maintenance Diagram - 9.5T8/MAS/48-835/IF15/P/DIM 10/1

