



# T8

## 9.5T8/MAS/48-835/IF15/P/DIM 10/1

Our TLEDs are available in InstantFit (Type A / Type C) or MainsFit (Ballast bypass / Type B) versions. The InstantFit lamps work on a broad variety of ballasts and LED drivers. Only InstantFit has over 15,000 lamp & ballast combinations delivering even light output, energy savings and a long lifetime. Our MainsFit products feature a double-ended design, simplifying installation while a proprietary safety circuit minimizes a shock risk. Lamp sizes range from 2-foot to 8-foot and U-bend with a variety of lumen outputs.

### Product data

General Information	
Cap-Base	G13 [Medium Bi-Pin Fluorescent]
Nominal lifetime	70,000 hour(s)
Switching Cycle	50,000
Lighting Technology	LED
EU RoHS compliant	Yes
Light Technical	
Color Code	835 [CCT of 3500K]
Beam Angle (Nom)	180 degree(s)
Luminous Flux	1,500 lm
Color Designation	White (WH)
Correlated Color Temperature (Nom)	3500 K
Luminous Efficacy (rated) (Nom)	157.00 lm/W
Color Consistency	<6
Color rendering index (CRI)	80
LLMF At End Of Nominal Lifetime (Nom)	70 %
Operating and Electrical	
Line Frequency	50 to 60 Hz

Input Frequency	50 to 60 Hz
Power Consumption	9.5 W
Starting Time (Nom)	0.5 s
Warm-up time to 60% light	0.5 s
Power Factor (Fraction)	0.9
Voltage (Nom)	120-277, 347 V
UL Type	Type A - works on ballast
Temperature	
Ambient temperature range	-20 °C to 55 °C
T-Case Maximum (Nom)	55 °C
Controls and Dimming	
Dimmable	Yes
Mechanical and Housing	
Bulb Finish	Frosted
Bulb Material	Plastic
Product Length	1,200 mm

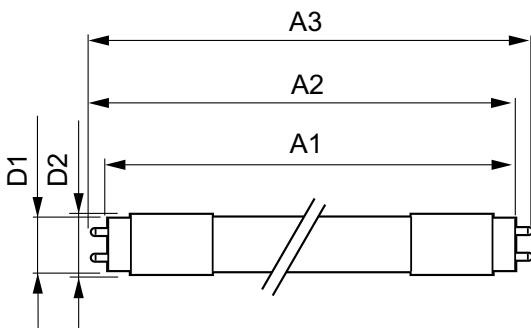
# T8

Bulb Shape	Tube, double-ended
<b>Approval and Application</b>	
Energy Saving Product	Yes
Approval Marks	RoHS compliance UL certificate DLC compliance
Energy Consumption kWh/1000 h	- kWh

<b>Product Data</b>	
Order product name	9.5T8/MAS/48-835/IF15/P/DIM 10/1

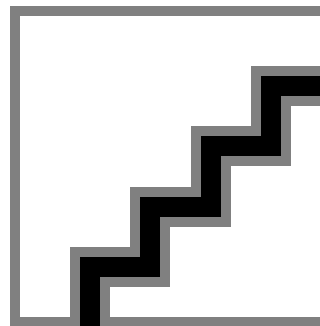
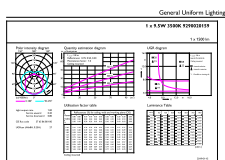
Full product name	9.5T8/MAS/48-835/IF15/P/DIM 10/1
Order code	929002015904
Material Nr. (12NC)	929002015904
Numerator - Quantity Per Pack	1
EAN/UPC - Product/Case	046677473983
Numerator - Packs per outer box	10
EAN/UPC - Case	50046677473988

## Dimensional drawing



Product	D1	D2	A1	A2	A3
9.5T8/MAS/48-835/IF15/P/DIM 10/1	25.7 mm	28 mm	1,198.1 mm	1,205.2 mm	1,212.3 mm

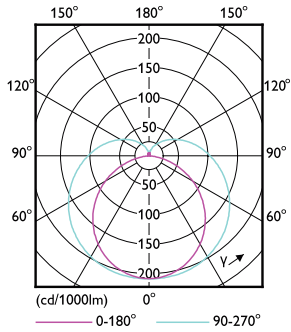
## Photometric data



General uniform lighting - 9.5T8/MAS/48-835/IF15/P/DIM 10/1

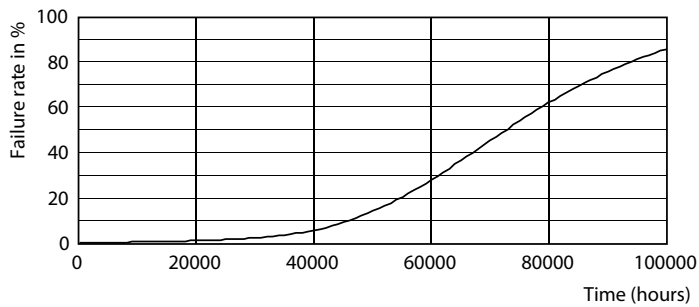
Spectral Power Distribution Colour - 9.5T8/MAS/48-835/IF15/P/DIM 10/1

Photometric data

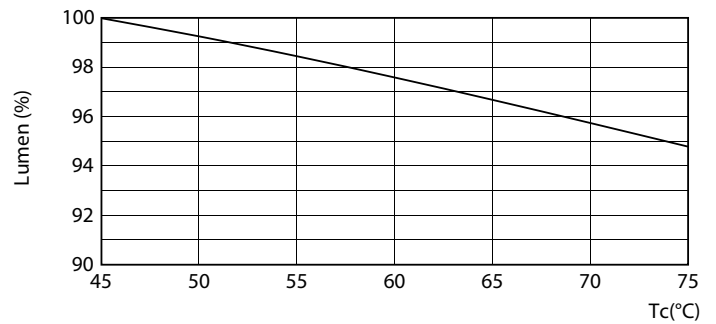


Light Distribution Diagram - 9.5T8/MAS/48-835/IF15/P/DIM 10/1

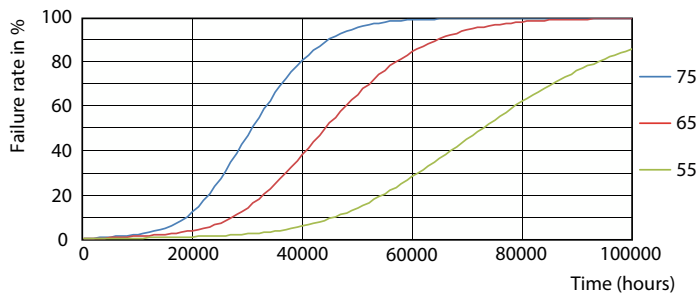
Lifetime



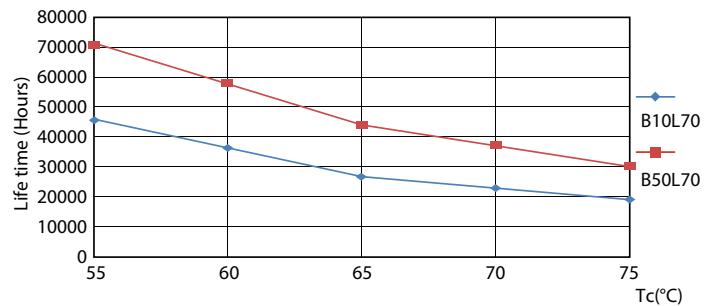
Life Expectancy Diagram - 9.5T8/MAS/48-835/IF15/P/DIM 10/1



Lumen Maintenance Diagram - 9.5T8/MAS/48-835/IF15/P/DIM 10/1



Life Expectancy Diagram - 9.5T8/MAS/48-835/IF15/P/DIM 10/1



Life Expectancy Diagram - 9.5T8/MAS/48-835/IF15/P/DIM 10/1

# T8

## Lifetime



Lumen Maintenance Diagram - 9.5T8/MAS/48-835/IF15/P/DIM 10/1

