

T8

9.5T8/MAS/48-840/IF16/P/DIM 10/1

Our TLEDs are available in InstantFit (Type A / Type C) or MainsFit (Ballast bypass / Type B) versions. The InstantFit lamps work on a broad variety of ballasts and LED drivers. Only InstantFit has over 15,000 lamp & ballast combinations delivering even light output, energy savings and a long lifetime. Our MainsFit products feature a double-ended design, simplifying installation while a proprietary safety circuit minimizes a shock risk. Lamp sizes range from 2-foot to 8-foot and U-bend with a variety of lumen outputs.

Product data

General Information		Starting Time (Nom)	
Base	G13 [Medium Bi-Pin Fluorescent]		0.5 s
EU RoHS compliant	Yes	Warm Up Time to 60% Light (Nom)	0.5 s
Nominal Lifetime (Nom)	70000 h	UL Type	Type A - works on ballast Type C - works with dedicated LED driver Type A+C - works with both ballasts and the LED driver
Switching Cycle	50000X	Power Factor (Nom)	0.9
		Voltage (Nom)	120-277, 347 V
Light Technical		Temperature	
Color Code	841 [CCT of 4100K (841)]	T-Ambient (Max)	55 °C
Beam Angle (Nom)	180 °	T-Ambient (Min)	-20 °C
Initial lumen (Nom)	1600 lm	T-Storage (Max)	65 °C
Color Designation	Cool White (CW)	T-Storage (Min)	-40 °C
Correlated Color Temperature (Nom)	4000 K	T-Case Maximum (Nom)	55 °C
Luminous Efficacy (rated) (Nom)	168.00 lm/W		
Color Consistency	<6	Controls and Dimming	
Color Rendering Index (Nom)	80	Dimmable	Yes
LLMF At End Of Nominal Lifetime (Nom)	70 %		
Operating and Electrical			
Input Frequency	50 to 60 Hz		
Power (Rated) (Nom)	9.5 W		

T8

Mechanical and Housing

Product Length 1200 mm

Approval and Application

Energy Efficiency Label (EEL) Not applicable
 Energy Saving Product Yes
 Approbation Marks RoHS compliance UL certificate DLC compliance
 Energy Consumption kWh/1000 h - kWh

Product Data

Order product name 9.5T8/MAS/48-840/IF16/P/DIM 10/1

EAN/UPC - Product 046677473990

Order code 473990

Numerator - Quantity Per Pack 1

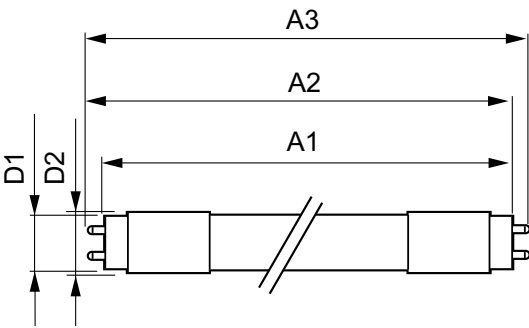
Numerator - Packs per outer box 10

Material Nr. (12NC) 929002016004

Net Weight (Piece) 0.220 kg

Model Number 9290020160

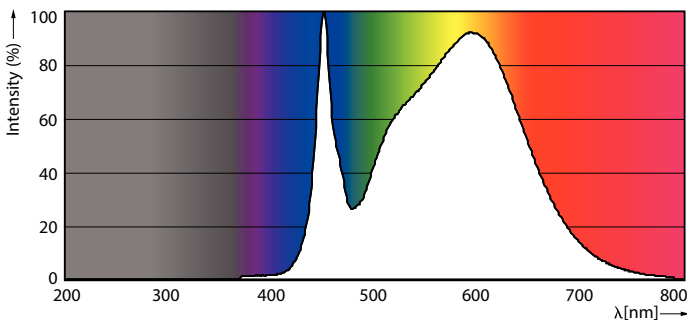
Dimensional drawing



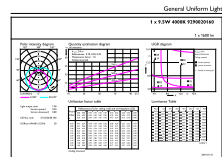
TLED 1200mmT8 120-277 9.5W 1600lm 4000K

Product	D1	D2	A1	A2	A3
9.5T8/MAS/48-840/ IF16/P/DIM 10/1	25.7 mm	28 mm	1198.1 mm	1205.2 mm	1212.3 mm

Photometric data



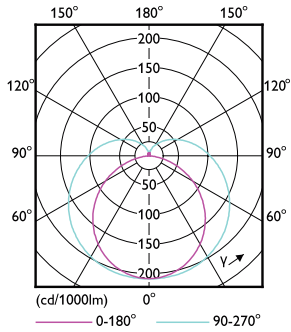
LEDtube 1200mm T8 9,5W 1600lm 4000K



LEDtube 1200mm T8 9,5W 1600lm 4000K

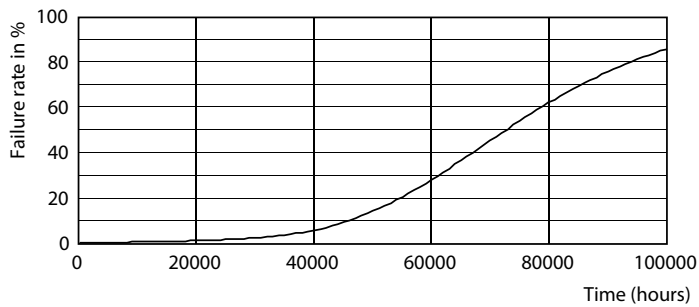
T8

Photometric data

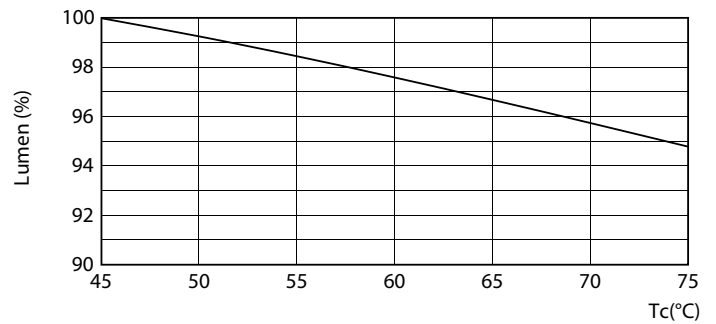


LEDtube 1200mm T8 9,5W

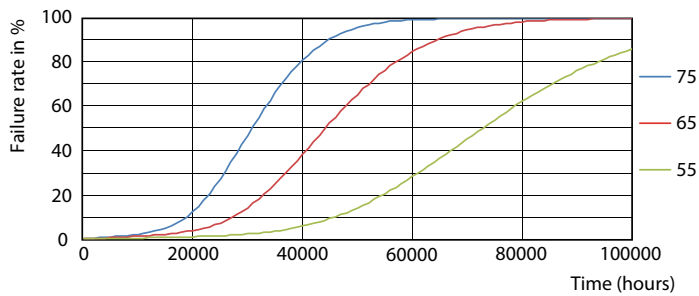
Lifetime



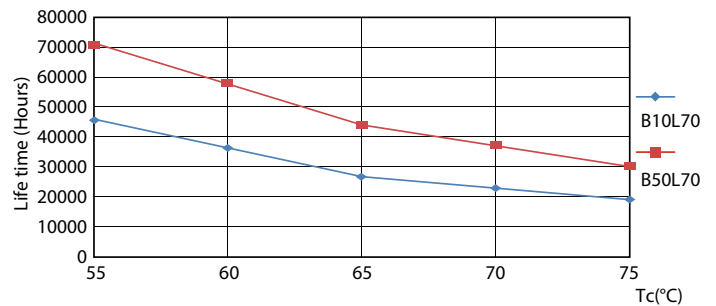
LEDtube 1200mm T8 9,5W



LEDtube 1200mm T8 9,5W LumenVsTc



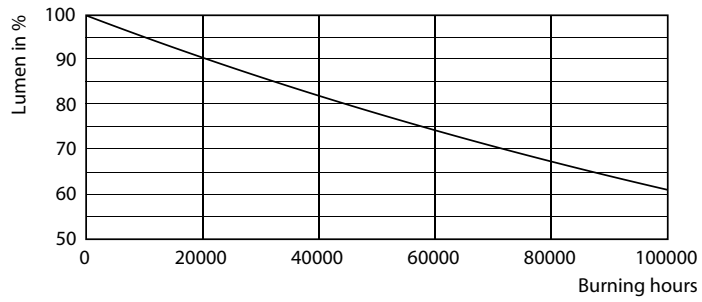
LEDtube 1200mm T8 9,5W FailureRate



LEDtube 1200mm T8 9,5W LifetimeVsTc

T8

Lifetime



LEDtube 1200mm T8 9,5W

