

# T8

## 9.5T8/MAS/48-840/IF16/P/DIM 10/1

Our TLEDs are available in InstantFit (Type A / Type C) or MainsFit (Ballast bypass / Type B) versions. The InstantFit lamps work on a broad variety of ballasts and LED drivers. Only InstantFit has over 15,000 lamp & ballast combinations delivering even light output, energy savings and a long lifetime. Our MainsFit products feature a double-ended design, simplifying installation while a proprietary safety circuit minimizes a shock risk. Lamp sizes range from 2-foot to 8-foot and U-bend with a variety of lumen outputs.

### Product data

General Information	
Cap-Base	G13 [Medium Bi-Pin Fluorescent]
Nominal lifetime	70,000 hour(s)
Switching Cycle	50,000
Lighting Technology	LED
EU RoHS compliant	Yes
Light Technical	
Color Code	840 [CCT of 4000K]
Beam Angle (Nom)	180 degree(s)
Luminous Flux	1,600 lm
Color Designation	Cool White (CW)
Correlated Color Temperature (Nom)	4000 K
Luminous Efficacy (rated) (Nom)	168.00 lm/W
Color Consistency	<6
Color rendering index (CRI)	80
LLMF At End Of Nominal Lifetime (Nom)	70 %
Operating and Electrical	
Line Frequency	50 to 60 Hz

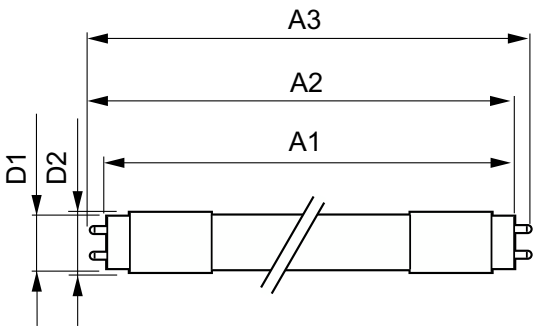
Input Frequency	50 to 60 Hz
Power Consumption	9.5 W
Starting Time (Nom)	0.5 s
Warm-up time to 60% light	0.5 s
Power Factor (Fraction)	0.9
Voltage (Nom)	120-277, 347 V
UL Type	Type A - works on ballast
Temperature	
Ambient temperature range	-20 °C to 55 °C
T-Case Maximum (Nom)	55 °C
Controls and Dimming	
Dimmable	Yes
Mechanical and Housing	
Bulb Finish	Frosted
Bulb Material	Plastic
Product Length	1,200 mm

T8

Bulb Shape	T8
Approval and Application	
Energy Saving Product	Yes
Approval Marks	RoHS compliance UL certificate DLC compliance
Energy Consumption kWh/1000 h	- kWh
Product Data	
Order product name	9.5T8/MAS/48-840/IF16/P/DIM 10/1

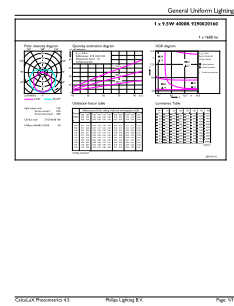
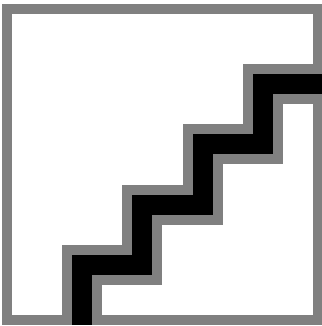
Full product name	9.5T8/MAS/48-840/IF16/P/DIM 10/1
Order code	929002016004
Material Nr. (12NC)	929002016004
Numerator - Quantity Per Pack	1
EAN/UPC - Product/Case	046677473990
Numerator - Packs per outer box	10
EAN/UPC - Case	50046677473995

Dimensional drawing



Product	D1	D2	A1	A2	A3
9.5T8/MAS/48-840/IF16/P/DIM 10/1	25.7 mm	28 mm	1,198.1 mm	1,205.2 mm	1,212.3 mm

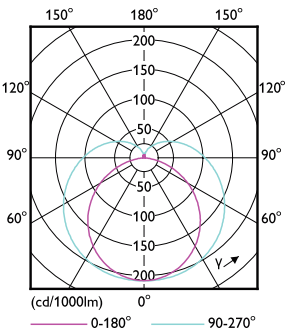
Photometric data



Spectral Power Distribution Colour - 9.5T8/MAS/48-840/IF16/P/DIM 10/1

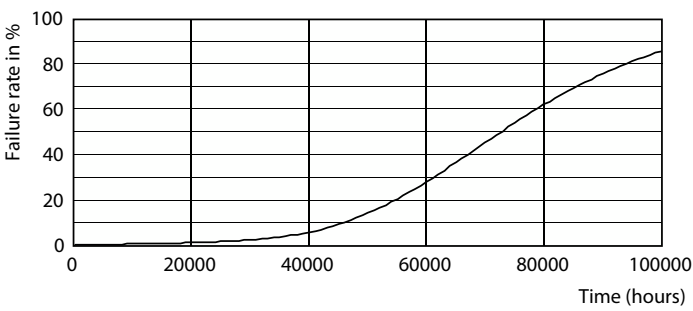
General uniform lighting - 9.5T8/MAS/48-840/IF16/P/DIM 10/1

Photometric data

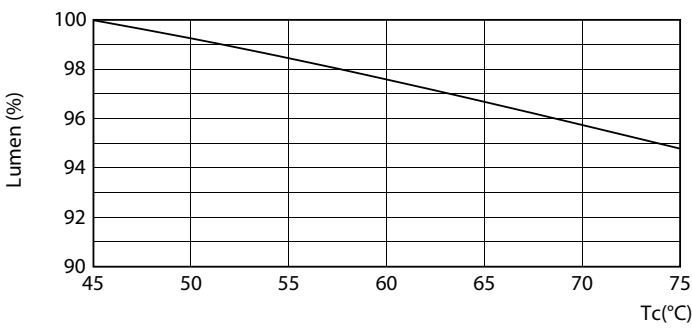


Light Distribution Diagram - 9.5T8/MAS/48-840/IF16/P/DIM 10/1

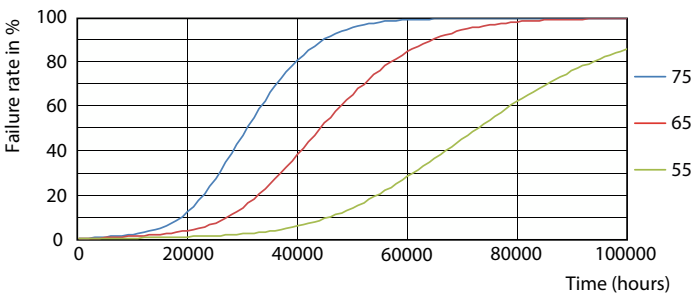
Lifetime



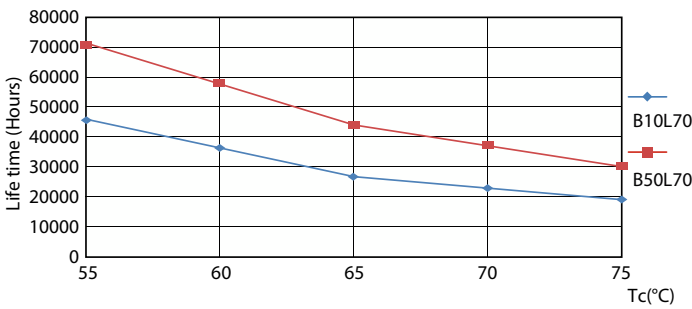
Life Expectancy Diagram - 9.5T8/MAS/48-840/IF16/P/DIM 10/1



Lumen Maintenance Diagram - 9.5T8/MAS/48-840/IF16/P/DIM 10/1

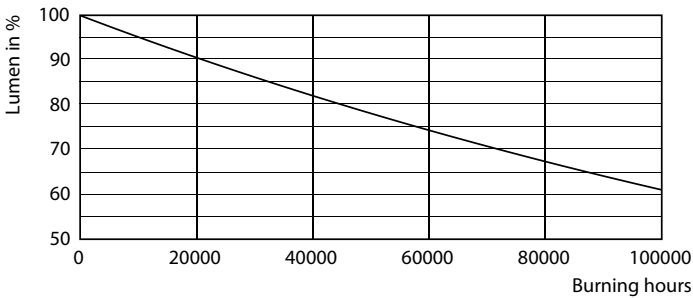


Life Expectancy Diagram - 9.5T8/MAS/48-840/IF16/P/DIM 10/1



Life Expectancy Diagram - 9.5T8/MAS/48-840/IF16/P/DIM 10/1

Lifetime



Lumen Maintenance Diagram - 9.5T8/MAS/48-840/IF16/P/DIM 10/1

