

# T8

## 15.5T8/MAS/48-850/IF25/P/DIM 25/1

Our TLEDs are available in InstantFit (Type A / Type C) or MainsFit (Ballast bypass / Type B) versions. The InstantFit lamps work on a broad variety of ballasts and LED drivers. Only InstantFit has over 15,000 lamp & ballast combinations delivering even light output, energy savings and a long lifetime. Our MainsFit products feature a double-ended design, simplifying installation while a proprietary safety circuit minimizes a shock risk. Lamp sizes range from 2-foot to 8-foot and U-bend with a variety of lumen outputs.

### Product data

General Information		Starting Time (Nom)	
Base	G13 [ Medium Bi-Pin Fluorescent]		0.5 s
EU RoHS compliant	Yes	Warm Up Time to 60% Light (Nom)	0.5 s
Nominal Lifetime (Nom)	70000 h	UL Type	Type A - works on ballast Type C - works with dedicated LED driver Type A+C - works with both ballasts and the LED driver
Switching Cycle	50000X	Power Factor (Nom)	0.9
Light Technical		Voltage (Nom)	120-277 V
Color Code	850 [ CCT of 5000K]	Temperature	
Beam Angle (Nom)	180 °	T-Ambient (Max)	55 °C
Initial lumen (Nom)	2500 lm	T-Ambient (Min)	-20 °C
Color Designation	Daylight	T-Storage (Max)	65 °C
Correlated Color Temperature (Nom)	5000 K	T-Storage (Min)	-40 °C
Luminous Efficacy (rated) (Nom)	161.00 lm/W	T-Case Maximum (Nom)	50 °C
Color Consistency	<5	Controls and Dimming	
Color Rendering Index (Nom)	80	Dimmable	Yes
LLMF At End Of Nominal Lifetime (Nom)	70 %		
Operating and Electrical			
Input Frequency	50 to 60 Hz		
Power (Rated) (Nom)	15.5 W		

# T8

## Mechanical and Housing

Product Length 1200 mm

## Approval and Application

Energy Efficiency Label (EEL) Not applicable  
 Energy Saving Product Yes  
 Approbation Marks RoHS compliance UL certificate DLC compliance  
 Energy Consumption kWh/1000 h - kWh

## Product Data

Order product name 15.5T8/MAS/48-850/IF25/P/DIM 25/1

EAN/UPC - Product 046677545208

Order code 545200

Numerator - Quantity Per Pack 1

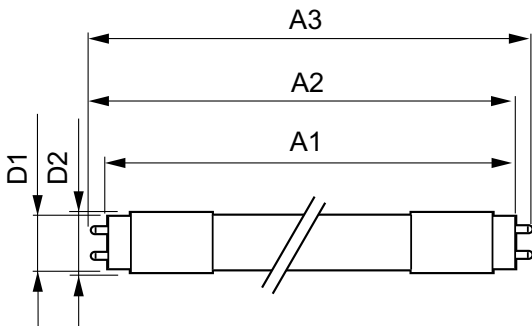
Numerator - Packs per outer box 25

Material Nr. (12NC) 929002016504

Net Weight (Piece) 0.230 kg

Model Number 9290020165

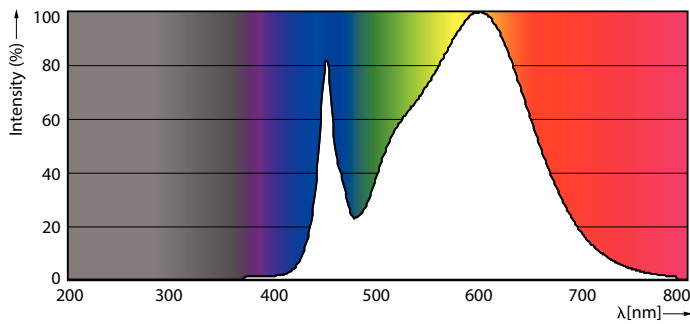
## Dimensional drawing



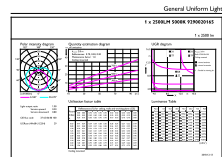
TLED 1200mmT8 120-277 15.5W 2500lm 5000K

Product	D1	D2	A1	A2	A3
15.5T8/MAS/48-850/ IF25/P/DIM 25/1	25.7 mm	28 mm	1198.1 mm	1205.2 mm	1212.3 mm

## Photometric data

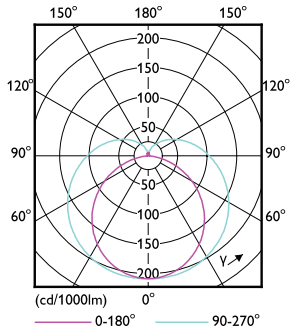


LEDtube 15,5W G13 T8 850



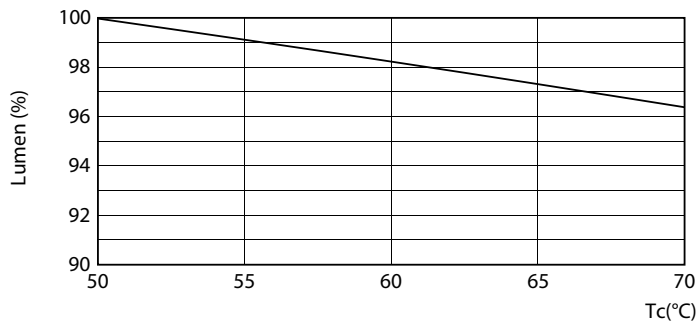
LEDtube 15,5W G13 T8 850

Photometric data

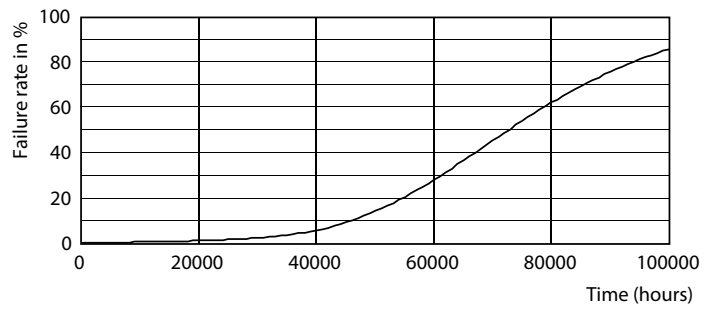


LEDtube 15,5W G13 T8

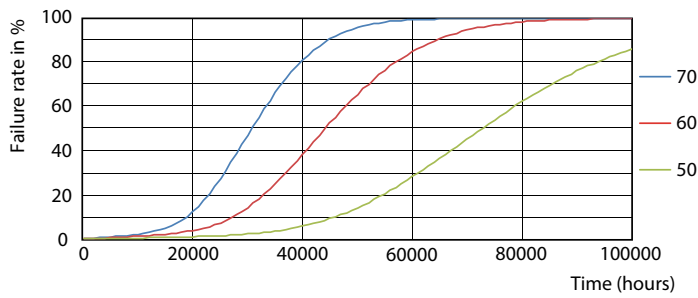
Lifetime



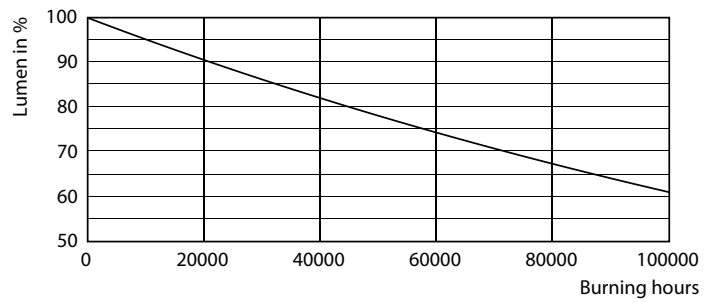
LEDtube 15,5W G13 T8 LumenVsTc



LEDtube 15,5W G13 T8



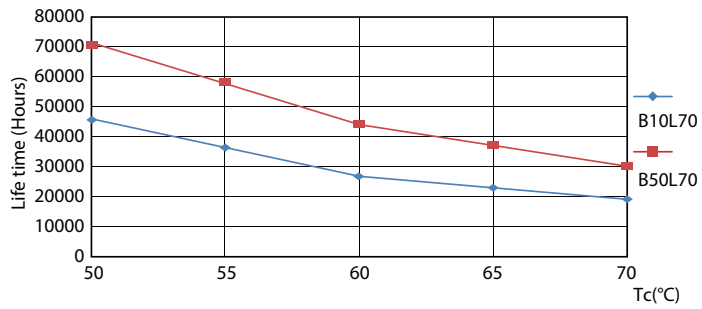
LEDtube 15,5W G13 T8 FailureRate



LEDtube 15,5W G13 T8

# T8

## Lifetime



LEDtube 15,5W G13 T8 LifetimeVsTc

