



MASTER LEDtube EM/ Mains T8

MASTER LEDtube 1200mm UO 15.5W 840 T8

The Philips MASTER LEDtube integrates a LED light source into a traditional fluorescent form factor. Its unique design creates a perfectly uniform visual appearance which cannot be distinguished from traditional fluorescent. For those that are looking for value for money within limited budget and re-lamping efforts for better light effect and lifetime.

Warnings and Safety

• -

Product data

General Information	
Cap-Base	G13 ROT (Rotating) [Medium Bi-Pin Fluorescent]
Nominal lifetime	60,000 hour(s)
Switching Cycle	200,000
Lighting Technology	LED
EU RoHS compliant	Yes

Light Technical	
Color Code	840 [CCT of 4000K]
Beam Angle (Nom)	160 degree(s)
Luminous Flux	2,500 lm
Color Designation	Cool White (CW)
Correlated Color Temperature (Nom)	4000 K
Luminous Efficacy (rated) (Nom)	161.00 lm/W
Color Consistency	<6
Color rendering index (CRI)	83

Operating and Electrical	
Line Frequency	50 to 60 Hz
Input Frequency	50 to 60 Hz
Power Consumption	15.5 W
Lamp Current (Max)	73 mA
Lamp Current (Min)	67 mA
Starting Time (Nom)	0.5 s
Warm-up time to 60% light	0.5 s
Power Factor (Fraction)	0.9
Voltage (Nom)	220-240 V

Temperature	
Ambient temperature range	-20 °C to 45 °C
T-Case Maximum (Nom)	55 °C

LLMF At End Of Nominal Lifetime (Nom)	70 %
---------------------------------------	------

MASTER LEDtube EM/Mains T8

Controls and Dimming

Dimmable	No
----------	----

Mechanical and Housing

Bulb Material	Plastic
Product Length	1,200 mm
Bulb Shape	T8

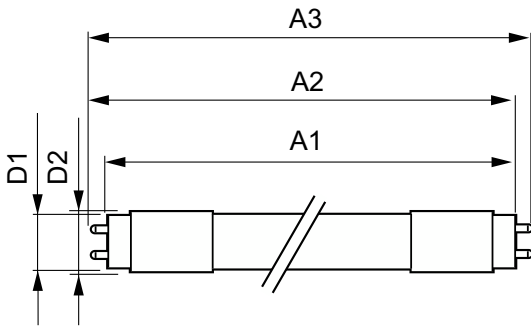
Approval and Application

Energy Saving Product	Yes
Approval Marks	RoHS compliance TUV CE marking KEMA Keur certificate
Energy Consumption kWh/1000 h	16 kWh

Product Data

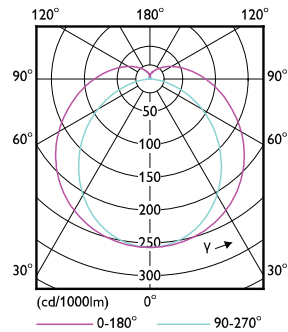
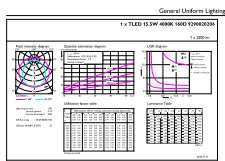
Order product name	MAS LEDtube 1200mm UO 15.5W 840 T8
Full product name	MASTER LEDtube 1200mm UO 15.5W 840 T8
Full product code	871869964723000
Order code	64723000
Material Nr. (12NC)	929002020602
Numerator - Quantity Per Pack	1
EAN/UPC - Product/Case	8718699647230
Numerator - Packs per outer box	10
EAN/UPC - Case	8718699647247

Dimensional drawing



Product	D1	D2	A1	A2	A3
MAS LEDtube 1200mm UO 15.5W 840 T8	25.8 mm	28 mm	1,198.2 mm	1,205.3 mm	1,212.4 mm

Photometric data

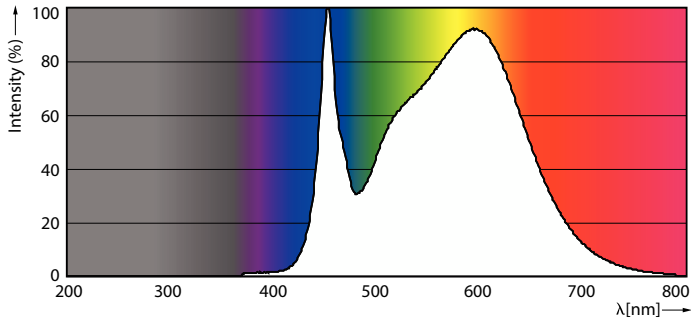


Accent Lighting Spots - MAS LEDtube 1200mm UO 15.5W 840 T8

Light Distribution Diagram - MAS LEDtube 1200mm UO 15.5W 840 T8

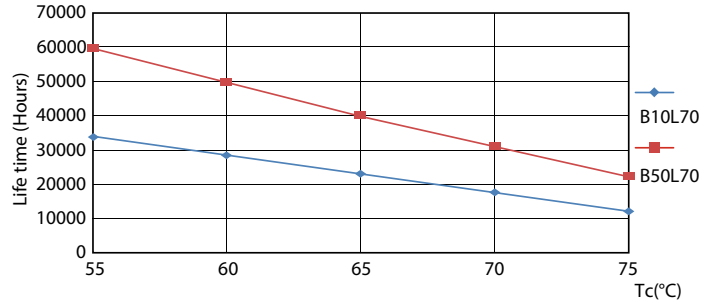
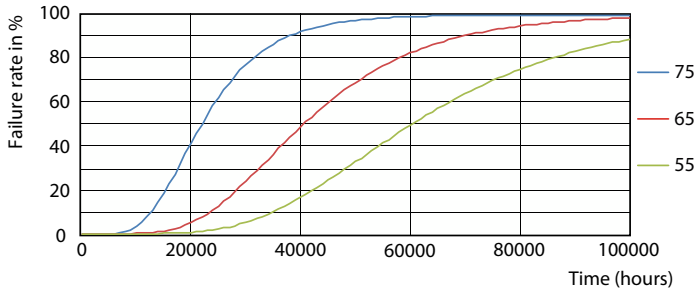
MASTER LEDtube EM/Mains T8

Photometric data



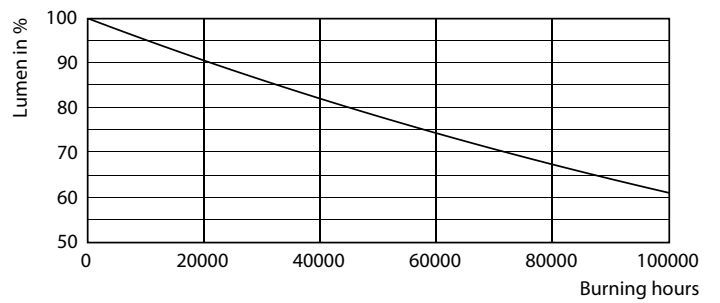
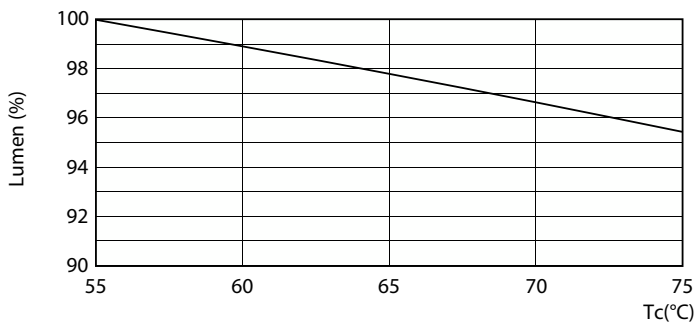
Spectral Power Distribution Colour - MAS LEDtube 1200mm UO 15.5W 840 T8

Lifetime



Life Expectancy Diagram - MAS LEDtube 1200mm UO 15.5W 840 T8

Life Expectancy Diagram - MAS LEDtube 1200mm UO 15.5W 840 T8

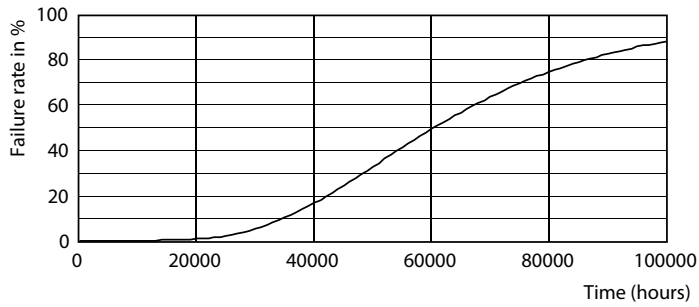


Lumen Maintenance Diagram - MAS LEDtube 1200mm UO 15.5W 840 T8

Lumen Maintenance Diagram - MAS LEDtube 1200mm UO 15.5W 840 T8

MASTER LEDtube EM/Mains T8

Lifetime



Life Expectancy Diagram - MAS LEDtube 1200mm UO 15.5W 840 T8

